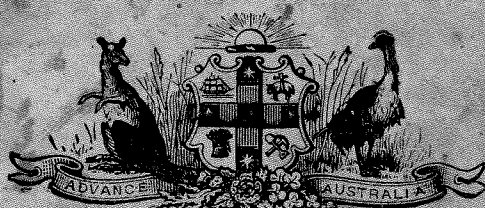


Letts's
No. 33
AUSTRALASIAN
ROUGH DIARY

WITH A WEEK IN AN OPENING,

FOR

1901.



An Edition giving more space (No. 44) is published in
Paper Boards, also CLOTH, Plain, and Interleaved
Blotting.

— — — — —
PUBLISHED FOR

Letts's Diaries Company, Limited,

BY

CASSELL & COMPANY, Limited, London, Paris, New York and Melbourne.

The 75 123456789
Remington

AFFORDS *The New*
 THE NEW
 WAY.

YOU cannot afford
 to do your writing
 in the old way!

Typewriter.

100, Gracechurch Street, E.C.

263, Oxford Street, W. (West-End Branch).

❖ **GEORGE SMYTHE and SON,** ❖
PAPER MAKERS,
 46, Cannon Street, London, E.C.

SUPERFINE, FINE, AND COMMON PRINTINGS.

ALSO
 FRICTION GLAZED AND SUPER CALENDERED PRINTING FOR PROCESS WORK.
 White and Tinted News in Webs and Sheets. Fine Art Papers.

ENGINE-SIZED AND TUB-SIZED WRITING PAPERS.

AZURE LAID AND YELLOW WAVES, AND EVERY DESCRIPTION OF PAPERS FOR ACCOUNT BOOKS.

ENGLISH AND FOREIGN TINTED WRITINGS AND PRINTINGS.

Telephone: Bank 845.

Telegrams: "CULVERKEY, LONDON."

Insist Upon Having

MILKMAID
 BRAND
CONDENSED MILK

The Original and Best.

Avoid low-priced Brands from which the cream has
 been abstracted, and ask for the "Milkmaid" Brand,
 the best for all purposes.

THE MOST NUTRITIOUS.

EPPS'S

GRATEFUL-COMFORTING.

COCOA

BREAKFAST-SUPPER.

OFFICE FURNITURE

NEWSON & Co.,
 MANUFACTURERS,

Finsbury House, Finsbury Sq.,

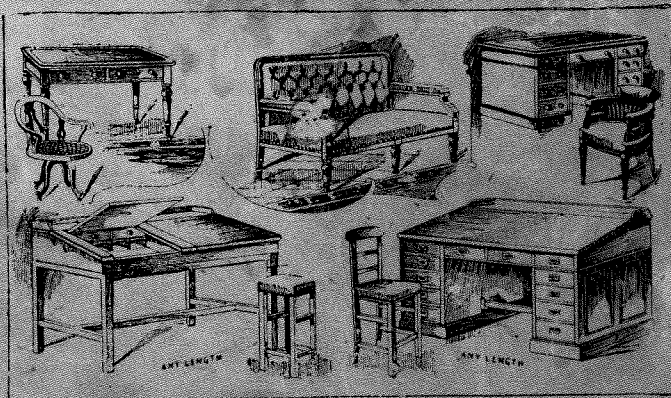
AND
 2, 4 & 6, WORSHIP ST., LONDON, E.C.

Established over Fifty Years.

Large Illustrated Price Lists Free.

Telephone: No. 2539 AVENUE.

LARGEST STOCK IN LONDON.



OETZMANN & CO.,

62, 64, 67, 63, 71, 73, 75, 77 and 79,

HAMPSTEAD ROAD, W.

(Continuation North of Tottenham Court Road.)

60 & 61, Grafton Street, DUBLIN; 75, Union Street, RYDE;
202, Rue Royale, and 12, Rue de la Pompe, BRUSSELS.

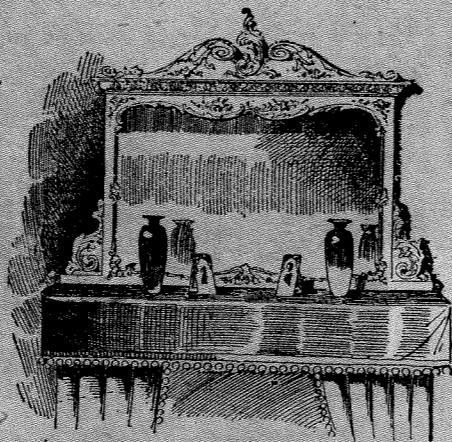
Factories—EAGLE WORKS, Hampstead Road; ALBION WORKS, Drummond Street;
SIANHOPE WORKS, William Street; CAMDEN WORKS, High Street, Camden Town.

SPECIAL ILLUSTRATED CATALOGUES

FOR
INEXPENSIVE ARTISTIC FURNISHING NOVELTIES.

Hall and Dining Room Furniture; Library, Office and Antique Furniture;
Drawing Room Furniture; Bedroom Furniture, Bedsteads and Bed-
ding; Carpets, Drapery, &c.; Cycles, Sterling Silver Goods, Iron-
mongery, Photographic Apparatus, &c., China, Glass, &c., **POST FREE.**

ALL CARPETS MADE UP FREE OF CHARGE.



HANDSOME LOUIS XV. ENAMELLED WHITE
CHIMNEY GLASS, 4ft. wide by 3ft. high, £1 15 0

NORWICH UNION FIRE OFFICE.

FOUNDED 1797.

Head Office: SURREY STREET, NORWICH.

London Offices: 50, FLEET STREET, E.C.; 71 and 72, KING WILLIAM STREET, E.C.; 195, PICCADILLY, W.;
1, VICTORIA STREET, S.W.; 31, LINCOLN'S INN FIELDS, W.C.; and 81, EDGWARE ROAD, W.

Amount Insured	-	-	-	£387,000,000
Losses Paid	-	-	-	£14,600,000

Lowest Rates of Premium. Prompt and Liberal Settlement of Losses.
APPLICATIONS FOR AGENCIES INVITED.

THE LANCASHIRE INSURANCE CO.

Established 1852.

Head Office: THE LANCASHIRE INSURANCE BUILDINGS, EXCHANGE STREET, MANCHESTER.
LONDON: 14, King William Street, E.C. West End—18, Regent Street, Waterloo Place, S.W.

CAPITAL, THREE MILLIONS.

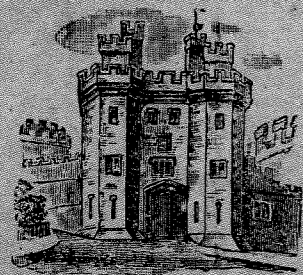
Paid-up Capital and Funds, as at 31st December, 1899, £1,618,404.

LIFE DEPARTMENT.—Indisputable. World-wide Policies. No Restrictions.—These Policies are specially useful to Bankers, Solicitors, and others, as collateral security. Payment of Claims on Proof of Death and Title.

FIRE DEPARTMENT.—Insurances granted at Home and Abroad at Equitable Rates.

EMPLOYERS' LIABILITY DEPARTMENT.—The "LANCASHIRE" is prepared to quote rates for each individual Insurance with due regard to the special circumstances, and to give the most favourable terms to risks where the arrangement of the premises, and the management, would seem to call for specially favourable consideration.

General Manager, DIGBY JOHNSON. Sub-Manager, CHARLES POVAH.
APPLICATIONS FOR AGENCIES INVITED.



The Palatine INSURANCE COMPANY,
LIMITED.

For **FIRE,**

Accident, Fidelity Guarantee, and Workmen's Compensation Insurance.

Head Office: 32, BROWN STREET, MANCHESTER.

Principal London Office: 101, CHEAPSIDE, E.C. West End Office: 87, ST. JAMES'S STREET, S.W.

SPECIAL ADVANTAGES OFFERED.

Royal Insurance Buildings,
1, North John Street,
LIVERPOOL.

FIRE

Invested Funds,

OVER

£9,700,000

Absolute Security. Moderate Rates of Premium. Liberal Policy Conditions.



Royal Insurance Buildings,
28, Lombard Street,
LONDON.

LIFE

Annual Income,

OVER

£2,800,000

SUN FIRE OFFICE

Head Office:

63, Threadneedle Street, London, E.C.

BRANCH OFFICES IN LONDON:

60, Charing Cross, S.W.

332, Oxford Street (corner of Vere Street), W.

40, Chancery Lane (Law Courts Branch), W.C.

42, Mincing Lane, E.C.



SUM INSURED in 1899 exceeded £435,000,000

INSURANCES ACCEPTED IN ALL PARTS OF THE WORLD.

THE STANDARD LIFE ASSURANCE COMPANY.

ESTABLISHED 1825.

ANNUAL REVENUE	-	-	-	£1,190,000.
BONUS DECLARED	-	-	-	£6,000,000.
ACCUMULATED FUNDS	-	-	-	£9,500,000.
CLAIMS PAID	-	-	-	£19,750,000.

BRANCH OFFICES & AGENCIES in THE BRITISH COLONIES, INDIA, and other countries abroad.

EDINBURGH: Head Office, 3, George Street.

LONDON: 83 King William Street, E.C.; and 3, Pall Mall East, S.W.

DUBLIN: 66, Upper Sackville Street.

**THE LAW GUARANTEE
AND
TRUST SOCIETY, LIMITED.**
Subscribed Capital, £1,000,000. Paid up Capital, £100,000.
Reserve Fund, £100,000.

**Fidelity Guarantees. Mortgage Insurance.
Debenture Insurance. License Insurance.
Contingency Insurance** (re Defects in Title, Lost Documents,
Missing Beneficiaries, &c).
Trusteeships under Wills, Marriage Settlements, &c., and for Debenture Holders.

Head Office: 49, CHANCERY LANE, LONDON, W.C.
City Office: 56, MOORGATE STREET, E.C.

**LONDON & LANCASHIRE
FIRE INSURANCE COMPANY.**

Subscribed
Capital,
£2,127,500.



*Fire Business only.
No Life Business
or Liabilities.*

Head Offices: 45, DALE STREET, LIVERPOOL.
78-76, KING WILLIAM STREET, LONDON, E.C.
Applications specially invited from Agents representing purely Life Companies.
Liberal Commission Allowed.

THE
**BRITISH LAW FIRE INSURANCE
COMPANY, LIMITED,**
5, LOTHBURY, LONDON, E.C.
(With Branches throughout the Kingdom.)

Subscribed Capital - - ONE MILLION.
Paid-up Capital & Reserve - £137,000.

Gentlemen in a position to introduce Business are
invited to undertake Agencies.

HAND-IN-HAND SOCIETY.
Instituted 1696.
The OLDEST INSURANCE OFFICE.
LARGE BONUSES.

Annual Income - - £411,754
Accumulated Funds - £2,908,995

26, NEW BRIDGE STREET, LONDON, E.C.

EVERY TRAVELLING TRUNK AND HOUSEHOLD OUGHT TO CONTAIN A BOTTLE OF
ENO'S 'FRUIT SALT'

A Household Remedy for Preventing and Curing by Natural Means



All Functional Derangements of the Liver, Temporary
Congestion arising from Alcoholic Beverages, Errors in
Diet—Eating or Drinking—Biliousness, Sick
Headache, Vomiting, Sourness of the Stomach, Constipation,
Thirst, Skin Eruptions, Feverish Cold with High
Temperature and Quick Pulse,
Throat Affections, and Fevers of all kinds.

SMALL POX, SCARLET FEVER, PYÆMIA, ERYSIPELAS, MEASLES, GANGRENE
and almost every mentionable Disease.—“I have been a nurse for ten years, and have nursed cases of
scarlet fever, pyæmia, erysipelas, measles, gangrene, cancer, and almost every mentionable disease. During this
time I have not been ill for a single day, and this I attribute to the use of Eno's 'FRUIT SALT,' which has kept my
blood in a pure state. I recommend it to all patients during convalescence. Its value as a means of health
cannot be over-estimated.”—A PROFESSIONAL NURSE (*Qualified*).

There is no doubt that where ENO'S 'FRUIT SALT' has been taken in the earlier stages of a Disease,
it has, in innumerable instances, prevented a serious illness. Its effect in any DISORDERED and
FEVERISH condition is MARVELLOUS. It is, in fact, NATURE'S OWN REMEDY, and an UN-
SURPASSED ONE.

CAUTION.—See capsule marked ENO'S 'FRUIT SALT.' Without it, you have a WORTHLESS IMITATION. Prepared only by
J. C. ENO, Ltd., at the 'FRUIT SALT' WORKS, LONDON, S.E., by J. C. ENO'S Patent.

Letts's

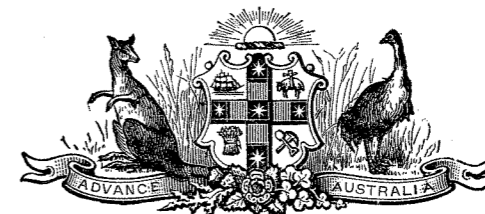
AUSTRALASIAN DIARY

AND ALMANAC

FOR

1901.

BEING THE SIXTY-FOURTH YEAR OF THE REIGN OF HER MAJESTY, QUEEN VICTORIA—(Accession June 20, 1837).



PUBLISHED FOR

LETT'S DIARIES COMPANY, LIMITED,

BY

CASSELL & COMPANY, LIMITED,

LONDON, PARIS, NEW YORK AND MELBOURNE.

[ALL RIGHTS RESERVED.]

Letts's Diaries can be obtained at all the principal Booksellers throughout the World.

For a Full Description whereby to obtain a Counterpart of this Diary, see back of Order Form.

Hazell, Watson & Viney, Ltd., Printers, London & Aylesbury.

CALENDAR FOR 1901.

Calendar for 1901, months January to June. Each month table includes days of the week, sun/holiday phases, and high water at Sydney.

Calendar for 1901, months July to December. Each month table includes days of the week, sun/holiday phases, and high water at Sydney.

The Time Standards used are:—(1) For Eclipses, Greenwich Time; (2) For Sun at Melbourne, Moon's Transit and Phases, Seasons and Sydney Tides, 10 hours East.

CALENDAR FOR 1901.

Calendar for 1901, months July to December. Each month table includes days of the week, sun/holiday phases, and high water at Sydney.

Calendar for 1901, months July to December. Each month table includes days of the week, sun/holiday phases, and high water at Sydney.

The Time Standards used are:—(1) For Eclipses, Greenwich Time; (2) For Sun at Melbourne, Moon's Transit and Phases, Seasons and Sydney Tides, 10 hours East.

Handwritten notes: 17/12/1900, 18/12/1900

Handwritten notes: 2/10/1900, 9.44

Handwritten notes: 27/11/1900, 23/11/1900

GENERAL INFORMATION, &c.

EXPLANATION OF CALENDAR.

Moon's Changes:—● New Moon; ☾ Quarter; ○ Full Moon; ☾ Last Quarter.

CHRONOLOGICAL NOTES.

Golden Number	2	Domin. Letter	F
Epact	10	Rom. Indiction	14
Solar Cycle	6	Julian Period	6614

ECLIPSES IN 1901.

Of the SUN, Two; of the Moon, One and an Appulse.

I. MAY 3. Lunar Appulse. The Moon's edge will be 52" from the earth's shadow at 6h 31m p.m.

II. MAY 18. Total Eclipse of the Sun. Path of Total Eclipse passes over the S.E. of Madagascar, Sumatra, Borneo and New Guinea. Visible as a Partial Eclipse in East Africa, the Indian Ocean, India (except the N.W.), Further India, the S.E. of China, the Philippines and Australia.

Eclipse	begins	ends	Longitude	Latitude
Central Eclipse	3h 58m a.m.	4h 20m a.m.	40° E	27° S
Eclipse	7h 10m a.m.	7h 52m a.m.	157° E	13° S
At Mauritius	8h 8m a.m.	8h 45m a.m.	145° E	6° S

Eclipse	begins	ends	Local Time
Total Eclipse	6h 51m a.m.	7h 53m a.m.	
Eclipse	7h 55m a.m.	9h 5m a.m.	

At	Begins	Ends	Local Time
Madras	9h 16m a.m.	11h 28m a.m.	
Hong Kong	1h 0m p.m.	2h 53m p.m.	
Perth (W. Aus.)	5h 57m p.m.	2h 38m p.m.	
Adelaide	3h 8m p.m.	4h 39m p.m.	

III. OCTOBER 27. Partial Eclipse of the Moon. Visible on the Continent of Europe, Eastern Africa, Asia, the Pacific and Alaska. Moon enters shadow, 2h 25m p.m.; leaves shadow, 4h 6m p.m. At London the Moon rises 30m after leaving shadow.

IV. NOVEMBER 11. Annular Eclipse of the Sun. Invisible at London. The path of Annular Eclipse passes from Sicily over Cairo, Arabia, the S. of India, Ceylon, the Gulf of Siam, and ends at Luzon. Partial Eclipse visible in Europe (except the Western part), N. and E. Africa, and in Asia (except the North East).

Eclipse	begins	ends	Longitude	Latitude
Central Eclipse	4h 30m a.m.	5h 44m a.m.	27° E	37° N
Eclipse	9h 13m a.m.	10h 27m a.m.	122° E	7° N

At Madras:—Begins 11h 18m a.m., ends 3h 22m p.m. (Local Time).

JEWISH CALENDAR.

The Year 5661 commenced Sept. 24th, 1900.

Jan. 1	Fast, Siege of Jeru.	Tebet	10
" 21	"	Sebat	1
Feb. 20	"	Adar	1
Mar. 4	Fast of Esther	"	13
" 5	Purim	"	14
" 6	Shushan Purim	"	15
" 21	"	Nisan	1
April 4	Fest. of Passover	"	15
" 5	" 2nd Day	"	16
" 10	" 7th	"	21
" 11	" 8th	"	22
" 20	"	Yiar	1
May 7	Fest. 33rd of Omer	"	18
" 19	"	Sivan	1
" 24	Pentecost, 1st Day	"	6
" 25	" 2nd	"	7
June 18	"	Tamuz	1

JEWISH CALENDAR, 1901—contd.

July 4	Fast of Tamuz	Tamuz	17
" 17	"	Ab	1
" 25	Fast of Ab	"	9
Aug. 16	"	Elul	1
Sept. 14	New Year 5662	Tisri	1
" 15	" 2nd Day	"	2
" 16	Fast of Guedaliah	"	3
" 23	Day of Atonement	"	10
" 28	Feast of Tabernacles	"	15
" 29	" 2nd Day	"	16
Oct. 4	Hosana Raba...	"	21
" 5	Feast of the 8th Day...	"	22
" 6	Rejoicing of the Law...	"	23
" 14	"	Hesvan	1
Nov. 12	"	Kislev	1
Dec. 6	Dedication of Temple	Tebet	25
" 11	"	"	1
" 20	Fast, Siege of Jeru.	"	10

GENERAL PUBLIC HOLIDAYS.

As kept in (1) NEW SOUTH WALES, (2) VICTORIA, (3) SOUTH AUSTRALIA, (4) WEST AUSTRALIA, (5) QUEENSLAND, (6) TASMANIA, (7) N. ZEALAND.

* * * The numbers indicate the Colonies in which each day is kept.

Jan. 1	N. Year's Day	1	2	3	4	5	6	7
" 26	Foundation of Australia...	1	2	3	4	5	6	7
Apr. 5	Good Friday	1	2	3	4	5	6	7
" 6	Easter Eve	1	2	3	4	5	6	7
" 8	Easter Mon.	1	2	3	4	5	6	7
May 24	Queen's Bthd.	1	2	3	4	5	6	7
" 27	Whit Monday	1	2	3	4	5	6	7
Nov. 9	Pr. W. Bthd.	1	2	3	4	5	6	7
Dec. 25	Christ Day	1	2	3	4	5	6	7
" 26	Boxing Day	1	2	3	4	5	6	7

ADDITIONAL HOLIDAYS.

New South Wales.—Bank Holiday, Aug. 1; Commemorate 8 hours, 1st Mon. in Oct.

Tasmania.—At Hobart, Regatta Day; Races at Elwick (Cup Day); S. T. A. and P. Society's Show Day; at Launceston, Regatta Day; Races at Moubray (Cup Day); Longford, Show Day.

Victoria.—Easter Tuesday, April 9; 8 hours, April 21; Separation Day, July 1; Agricultural Show Day, Sept. 6; Cup Day, Melbourne, Nov. 5.

South Australia.—Queen's Accession, June 20; 8 hours Celebration, Sept. 1; Proclamation Day, Dec. 28.

Western Australia.—Foundation Day, June 1; Coronation Day, June 28; Proclamation Day, Oct. 21.

Queensland.—March 17; April 23; Aug. 1; Nov. 30; Dec. 10.

New Zealand.—St. Patrick's Day, March 17; St. George's Day, April 23; St. Andrew's Day, Nov. 30.

In the event of any of these days falling upon a Sunday, the Monday next following is kept as a Holiday; and whenever the 26th day of December falls upon a Monday, the day following also is a Holiday.

Bills due upon any of these Holidays, or upon any other days appointed by the Governor's proclamation, in addition to, or in substitution for, any of them, are not payable until the next business day.

SPECIAL PUBLIC HOLIDAYS.

As kept separately in each Colony, will be found specified in the calendar.

Holidays falling on Sunday are kept on Monday.

AUSTRALASIAN GOVERNORS.

BRITISH NEW GUINEA.—G. Ruthven Le Hunte, C.M.G., (£1,500).

FIJI ISLANDS AND WESTERN PACIFIC.—Sir G. T. Michael O'Brien, K.C.M.G. (£2,500).

NEW SOUTH WALES.—The Rt. Hon. Earl Beauchamp, K.C.M.G. (£7,000).

NEW ZEALAND.—The Rt. Hon. Earl of Ranfurly, K.C.M.G. (£5,000).

QUEENSLAND.—The Rt. Hon. Lord Lamington, G.C.M.G. (£5,000).

SOUTH AUSTRALIA.—The Rt. Hon. Lord Tennyson, K.C.M.G. (£4,000).

TASMANIA.—The Rt. Hon. Viscount Gormanston, G.C.M.G. (£3,500).

VICTORIA.—The Rt. Hon. Lord Brassey, K.C.B. (£7,000).

WESTERN AUSTRALIA.—Lieut.-Col. Sir Gerard Smith, K.C.M.G. (£4,000).

QUEEN & THE ROYAL FAMILY.

Date of Birth and Age in 1901.

Queen Victoria ... May 24, 1819—82

Princess Royal ... Nov. 21, 1840—61

(Married January 25, 1858, to Crown Prince Frederick William of Prussia) 8 children.

Prince of Wales ... Nov. 9, 1841—60

(Married March 10, 1863, to Alexandra Princess of Denmark, born December 1, 1844.) Issue—

Albert Victor Christian Edward, Jan. 8, 1864 (Died January 14, 1892.)

George Frederick Ernest Albert (Duke of York) June 3, 1865—36

(Married July 6, 1893, to Princess Victoria Mary (May), 4 children.

Louise Vic. Alexandra Dagmar, Feb. 20, 1867—34

(Married July 27, 1889, to Duke of Fife) 2 children.

Victoria Alexandra Olga Mary, July 6, 1868—33

Maud Charlotte Mary Victoria, Nov. 26, 1869—32

(Married July 22, 1896, to Prince Charles of Denmark.)

Prs. Alice Maud Mary, April 25, 1843

(Married July 1, 1862, to Prince Louis of Hesse, died December 14, 1878) 7 children.

Prince Alfred Ernest Albert, Duke of Edinburgh (Duke of Saxe-Coburg-Gotha, 1893) ... Aug. 6, 1844—57

(Married January 23, 1874, to Grand Duchess Marie Alexandrovna of Russia) 5 children.

Prs. Helena Aug. Vict., May 25, 1846—55

(Married July 5, 1866, to Prince Christian of Schleswig-Holstein) 5 children.

Prs. Lou. Caroline Alb., March 18, 1848—53

(Married March 21, 1871, to John, Duke of Argyll).

Prince Arthur William Patrick Albert (Duke of Connaught) ... May 1, 1850—51

(Married March 13, 1879, to Princess Louise of Prussia) 3 children.

Prince Leopold George Duncan Albert (Duke of Albany) ... April 7, 1853

(Married April 27, 1882, to Princess Helen of Waldeck-Pyrmont, died March 28, 1884) 2 children.

Princess Beatrice M. Victoria Feodore April 14, 1857—44

(Married July 23, 1885, to Prince Henry of Battenberg) 4 children.

Duke of Cumberland... Sept. 21, 1845—56

Duke of Cambridge ... Mar. 26, 1819—82

Duch. of Mecklenburgh July 12, 1822—79

GENERAL INFORMATION, &c.

NEW SOUTH WALES CUSTOMS DUTIES.

PERMANENT TARIFF.

Spirits—On all kinds of spirits and spirituous compounds, imported, and not otherwise enumerated, per proof gallon 14 0

No allowance beyond 16·5 shall be made for the underproof of any spirit of a less strength than 16·5 under pf.

Case Spirits—Contents of two, three, four, or five gallons shall be charged—

Two gallons and under as two gallons.

Over two gallons and not exceeding three as three gals.

Over three gallons and not exceeding four as four gallons.

Over four gallons and not exceeding five as five gallons.

Bitters, essences, fluid extracts, sarsaparilla, tinctures, medicines, infusions, and toilet preparations containing—

Not more than 25 per cent. of proof spirit, per gallon ... 3 6

Not more than 50 per cent. of proof spirit, per gallon ... 7 0

Not more than 75 per cent. of proof spirit, per gallon ... 10 6

If containing more than 75 per cent. of proof spirit, per gal. 14 0

If containing spirit overproof to be charged as spirituous compounds, per proof gallon 14 0

Methylated spirit, per gallon ... 0 1

Perfumed spirits, perfumed waters, Florida water, and bay rum, per liquid gallon... 20 0

Wines—Sparkling—For six reputed quarts, or twelve reputed pints... 10 0

Other kinds, per gallon ... 5 0

Other kinds—For six reputed quarts, or twelve reputed pints ... 5 0

Beer, ale, porter, spruce, or other beer, cider and perry—

In wood or jar, per gallon ... 0 6

In bottle, per gallon ... 0 9

For six reputed quarts, or twelve reputed pints, per gallon ... 0 9

Tobacco—Delivered from ship's side or from a Customs Bond for home consumption, manufactured, unmanufactured, and snuff, per lb. ... 3 0

Unmanufactured, entered to be manufactured in the Colony.

At the time of removal from a Customs Bond or from an importing ship to any licensed tobacco manufactory for manufacturing purposes only into tobacco, cigars and cigarettes, per lb. 1 0

Sheepwash, per lb. ... 0 3

Cigars and Cigarettes (including wrappers in latter case), per lb. ... 6 0

Opium and any preparation thereof, per lb. ... 20 0

NEW SOUTH WALES CUSTOMS DUTIES—contd.

Tea, per lb. ... 0 1

Sugar—refined, per cwt. ... 4 0

" —raw, and solid glucose, per cwt. ... 3 0

Molasses and Treacle—Glucose, Liquid and Syrup, per cwt. 2 0

Biscuits, per lb. ... 0 0½

Confectionery (including cakes, comfits, liquorice, liquorice paste, lozenges of all kinds, coconut in sugar, sugar-candy, succades, and sweetmeats), per lb. ... 0 1

Fruits—Dried, candied or prunes (exclusive of dates), per lb. 0 2

Jams and Jellies—per lb. or reputed package of that weight, and so in proportion for any such reputed weight, per lb. 0 0½

Preserves and canned fruits, fruits boiled, peel, drained or dry, per lb. 0 0½

NEW SOUTH WALES INCOME TAX.

Incomes of £200 and under are exempt. Over this amount the tax is 6d. in the £.

The following table of amounts due on net incomes may be found useful:—

£	s.	d.	£	s.	d.
225	0	12	450	6	5
250	1	5	500	7	10
300	2	10	600	10	0
325	3	2	700	12	10
350	3	15	800	15	0
400	5	0	900	17	10
425	5	12	1000	20	0

Incomes of municipal or other local corporations, dividends and profits of savings banks, funds and incomes of trades unions or friendly societies, or of ecclesiastical, charitable, or educational bodies of a public character, incomes derived from Government stock, accruing to persons not resident in New South Wales, are all exempt from taxation. Private persons are entitled to have deducted from their taxable incomes, outgoings actually incurred in the colony in the production of their incomes and premiums not exceeding £50 on life assurance or fidelity guarantees. No deduction is to be made for the maintenance of a family or establishment, domestic or private expenses, loss recoverable under insurance, income and land tax, or income earned in the colony and carried to reserve or capitalised. In order to ascertain the sum on which income tax is payable, the amount of income from all sources received in the preceding year shall be the basis of calculation; no tax is payable in respect of income earned outside New South Wales.

TIDAL CONSTANTS.

Corrections applicable to Sydney to obtain Standard or Zone Time of High Water at the undermentioned places:—

Adelaide	subtract	3h 22m
Brisbane	add	2h 16m
Hobart	subtract	0h 7m
Launceston	add	5h 39m
Melbourne	subtract	5h 25m
Newcastle	add	0h 9m
Port Pirie	subtract	1h 30m
Rockhampton	add	3h 24m
Thursday Island	add	4h 34m

HER MAJESTY'S MINISTERS.*

Prime Minister and Foreign Secretary, Rt. Hon. the Marquess of Salisbury, K.G.

Lord President of the Council, Rt. Hon. the Duke of Devonshire, K.G.

Lord High Chancellor, Rt. Hon. the Earl of Halsbury.

Lord Privy Seal, Rt. Hon. Viscount Cross, G.C.B.

Chancellor of the Duchy of Lancaster, Rt. Hon. Lord James.

Chancellor of the Exchequer, Rt. Hon. Sir Michael Hicks Beach.

Secretary of State for the Home Department, Rt. Hon. Sir Matthew White Ridley.

Secretary of State for the Colonies, Rt. Hon. J. Chamberlain.

Secretary of State for War, Rt. Hon. the Marquess of Lansdowne, K.G.

Secretary of State for India, Rt. Hon. Lord George Hamilton.

First Lord of the Admiralty, Rt. Hon. G. J. Goschen.

First Lord of the Treasury, Rt. Hon. A. J. Balfour.

President of the Board of Trade, Rt. Hon. C. T. Ritchie.

President of the Local Government Board, Rt. Hon. Henry Chaplin.

Lord Lieutenant of Ireland, Rt. Hon. Earl Cadogan, K.G.

Lord Chancellor of Ireland, Rt. Hon. Lord Ashbourne.

GENERAL INFORMATION, &c.

THE BRITISH EMPIRE.
COLONIAL GOVERNORS.
INDIAN.

*INDIA—Viceroy and Governor General, The Rt. Hon. Lord Curzon, G.M.S.L., G.M.I.E. (Rs. 20,900).

Madras—Governor—Sir A. E. Havlock, G.C.M.G., G.C.I.E. (Rs. 10,000).

Bombay—Governor—Rt. Hon. Lord Northcote, G.C.I.E. C.B. (Rs. 10,000).

Bengal—Lieutenant-Governor—Sir John Woodburn, K.C.S.I. (Rs. 8,333).

Punjab—Lieut.-Governor—Sir W. Mackworth Young, K.C.S.I. (Rs. 8,333).

N.W. Prov. and Oudh—Lieutenant-Governor—Sir Antony P. Macdonell, G.C.S.I. (Rs. 8,333).

Central Prov.—Chief Commissioner—A. H. L. Fraser, C.S.I. (Rs. 4,166).

Burmah—Lieutenant-Governor—Sir F. W. R. Fryer, K.C.S.I. (Rs. 8,333).

Assam—Chief Commissioner—H. J. S. Cotton, C.S.I. (Rs. 4,166).

NORTH AMERICAN.

CANADA—The Rt. Hon. The Earl of Minto, G.C.M.G. (\$50,000).

Provinces of Canada:—

ONTARIO—The Hon. Sir Oliver Mowat, G.C.M.G. (\$10,000).

QUEBEC—L. A. Jetté (\$10,000).

NOVA SCOTIA—Sir M. B. Daly, K.C.M.G. (\$9,000).

NEW BRUNSWICK—The Hon. A. R. McClellan (\$9,000).

MANITOBA—The Hon. J. C. Patterson (\$10,000).

BRITISH COLUMBIA—T. R. McInnes (\$9,000).

PRINCE EDWARD ISLAND—P. A. McIntyre, M.D. (\$7,000).

NORTH-WEST TERRITORIES—A. E. Forget (\$7,000).

NEWFOUNDLAND—Col. Sir H. E. McCallum, K.C.M.G. (\$10,000).

WEST INDIAN.

JAMAICA—Sir A. W. Hemming, G.C.M.G. (£5,000).

BRITISH HONDURAS—Sir D. Wilson, K.C.M.G. (\$8,748).

BRITISH GUIANA—Sir W. J. Sendall, G.C.M.G. (£5,000).

BAHAMA ISLANDS—Sir Gilbert T. Carter, K.C.M.G. (£2,000).

TRINIDAD—Sir H. E. H. Jerningham, K.C.M.G. (£5,000).

BARBADOS—Sir J. S. Hay, K.C.M.G. (£3,000).

Windward Islands:—

GRENADA—Sir C. A. Moloney, K.C.M.G. (£2,500).

ST. VINCENT—Sir H. L. Thompson, K.C.M.G. (£700).

ST. LUCIA—Sir C. A. King-Harman, K.C.M.G. (£800).

Leeward Islands:—

ANTIGUA—Sir F. Fleming, K.C.M.G. (£2,600).

ST. CHRISTOPHER NEVIS—C. T. Cox (£900).

DOMINICA—H. H. J. Bell (£900).

* Salaries are (excluding allowances) stated in Rupees per mensem.

† New appointment pending at time of going to press.

THE BRITISH EMPIRE—contd.

MONTserrat—T. H. Watkins (£400).

VIRGIN ISLANDS—N. G. Cookinan (£250).

BERMUDA ISLANDS—Lieut.-Gen. Sir G. D. Barker, K.C.B. (£2,946).

AFRICAN.

CAPE OF GOOD HOPE—Sir A. Milner, K.C.B., G.C.M.G. (£6,000 and £3,000 as High Commissioner for South Africa).

BECHUANALAND PROTECTORATE—Major H. J. Goolld-Adams, C.B., C.M.G. (£1,000).

BASUTOLAND—Sir G. Y. Lagden, K.C.M.G. (£1,500).

NATAL—The Hon. Sir W. F. Hely-Hutchinson, G.C.M.G. (£5,000).

ST. HELENA—R. A. Sterndale (£500).

SIERRA LEONE—Col. Sir F. Cardew, K.C.M.G. (£2,000).

GAMBIA—Sir R. B. Llewellyn, K.C.M.G. (£1,500).

GOLD COAST—Sir F. M. Hodgson, K.C.M.G. (£3,000).

LAGOS—Sir W. MacGregor, M.D., K.C.M.G., C.B. (£2,500).

N. NIGERIA—Brig.-Gen. F. J. D. Lugard, C.B., D.S.O. (£2,500).

S. NIGERIA—Sir R. D. Rayment Moor, K.C.M.G. (£2,500).

MEDITERRANEAN.

GIBRALTAR—Gen. Sir George White, V.C., G.C.B., G.C.S.I., G.C.I.E., (Ps. 125,000).

MALTA—Gen. Sir F. W. Grenfell, G.C.M.G., G.C.B. (£5,000).

CYPRUS—Sir W. F. Haynes Smith, K.C.M.G. (£3,000).

EASTERN.

CEYLON—The Rt. Hon. Sir J. West Ridgeway, G.C.M.G., G.C.B., K.C.S.I., (Rs. 80,000).

HONG KONG—Sir H. A. Blake, G.C.M.G. (£32,000).

MAURITIUS—Sir Charles Bruce, K.C.M.G. (Rs. 50,000).

SEYCHELLES ISLANDS—E. B. Sweet-Escott, C.M.G. (Rs. 12,500).

STRAITS SETTLEMENTS—† (£33,800).

BRITISH NORTH BORNEO AND LABUAN—H. C. Clifford, C.B.

MISCELLANEOUS.

FALKLAND ISLANDS—W. Grey-Wilson, C.M.G. (£1,200).

JERSEY—Lieut.-Gov.—Lieut.-Gen. Sir E. Hopton, K.C.B. (£1,700).

GUERNSEY—Lieut.-Gen. N. Stevenson (£1,700).

ISLE OF MAN—The Rt. Hon. Lord Henniker (£1,800).

MOHAMMEDAN CALENDAR.

January	22 1901 ... 1318	Shawall	1
February	20	Dulkaada	1
March	22	Dulheggia	1
April	20 1319	Muharram	1
May	20	Saphar	1
June	18	Rabia I.	1
July	18	Rabia II.	1
August	16	Jomada I.	1
September	15	Jomada II.	1
October	14	Rajab	1
November	13	Shaaban	1
December	12	Ramadán	1

COLONIAL AGENTS—CROWN AND OTHERS.

CROWN AGENTS FOR COLONIES—E. E. Blake, Esq., and Major M. A. Cameron, R.E., C.M.G. Downing-street, and 1, Tokenhouse-buildings.

CANADA—Lord Strathcona, G.C.M.G., High Com.; J. G. Colmer, C.M.G., Sec., 17, Victoria-street.

BRITISH COLUMBIA—W. Walter, 15, Serjeant's Inn.

CAPE OF GOOD HOPE—Sir David Tennant, K.C.M.G.; J. S. Brydges Todd, C.M.G., 112, Victoria-street.

NATAL—Sir W. Peace, K.C.M.G., Agent-General; R. Russell, Secretary, 26, Victoria-street.

NEW SOUTH WALES—Sir Henry Copeland; S. Yardley, C.M.G., Secretary, 9, Victoria-street.

VICTORIA—Lieut.-General Sir Andrew Clarke, G.C.M.G.; Chief Clerk, H. Myddleton, 15, Victoria-street.

SOUTH AUSTRALIA—Sir J. A. Cockburn, K.C.B.; T. F. Wicksteed, C.M.G., Secretary, 1, Crosby-square, Bishopsgate-street Within.

QUEENSLAND—Sir Horace Tozer, K.C.M.G.; Secretary, C. S. Dicken, C.M.G., 1, Victoria-street.

WESTERN AUSTRALIA—Hon. Sir E. H. Wittenoom, K.C.M.G.; R. C. Hare, Secretary, 15, Victoria-street.

NEW ZEALAND—Hon. W. P. Reeves; Walter Kennaway, C.M.G., Sec., 13, Victoria-street.

TASMANIA—Sir Philip Oakley Fysh, K.C.M.G.; Secretary, H. W. Ely, 5, Victoria-street.

WAGES TABLE.

Yr.	Per Month.	Per Week.	Per Day.
£	£ s. d.	£ s. d.	s. d.
1	0 1 8	0 0 4 ¹ / ₂	0 0 ¹ / ₂
2	0 3 4	0 0 9 ¹ / ₂	0 1 ¹ / ₂
3	0 5 0	0 1 1 ¹ / ₂	0 2
4	0 6 8	0 1 6 ¹ / ₂	0 2 ¹ / ₂
5	0 8 4	0 1 11	0 3 ¹ / ₄
6	0 10 0	0 2 3 ¹ / ₄	0 4
7	0 11 8	0 2 8 ¹ / ₂	0 4 ¹ / ₂
8	0 13 4	0 3 0 ¹ / ₂	0 5 ¹ / ₄
9	0 15 0	0 3 5 ¹ / ₂	0 6
10	0 16 8	0 3 10	0 6 ¹ / ₂
12	1 0 0	0 4 7 ¹ / ₂	0 8
14	1 3 4	0 5 4 ¹ / ₂	0 9 ¹ / ₂
16	1 6 8	0 6 1 ¹ / ₂	0 10 ¹ / ₂
18	1 10 0	0 6 11	0 11 ¹ / ₂
20	1 13 4	0 7 8	1 1 ¹ / ₂
30	2 10 0	0 11 6	1 7 ¹ / ₂
40	3 6 8	0 15 4 ¹ / ₂	2 2 ¹ / ₂
50	4 3 4	0 19 2 ¹ / ₂	2 9
60	5 0 0	1 3 0 ¹ / ₂	3 3 ¹ / ₄
70	5 16 8	1 6 10	3 10
80	6 13 4	1 10 8	4 4 ¹ / ₂
90	7 10 0	1 14 7 ¹ / ₂	4 11 ¹ / ₂
100	8 6 8	1 18 5 ¹ / ₂	5 5 ¹ / ₂
110	9 3 4	2 2 3 ¹ / ₄	6 0 ¹ / ₂
120	10 0 0	2 6 2	6 7
130	10 16 8	2 10 0	7 1 ¹ / ₂
140	11 13 4	2 13 10	7 8
150	12 10 0	2 17 8 ¹ / ₂	8 2 ¹ / ₂
200	16 13 4	3 16 11	10 11 ¹ / ₂

If wages be Guineas instead of Pounds, to each Guinea add 1d. to the Month, or 1d. to the week.

LESSONS FOR SUNDAYS, &c., FOR 1901.

Day of Month.	Sundays, &c.	Morning Prayer.		Evening Prayer.	
		First.	Second.	First.	Second.
JAN. 1	Circumcision	Genesis 17 v. 9	Romans 2 v. 17	Deuteronomy 10 v. 12	Colossians 2 v. 8 to v. 18
" 6	Epiphany	Isaiah 60	Luke 3 v. 15 to v. 23	Isaiah 49 v. 13 to v. 24	John 2 to v. 12
" 13	1 af. Epiph.	—51	Matthew 8 to v. 18	—52 v. 13 and 53 or 54	Acts 8 v. 5 to v. 26
" 20	2 —	—55	—12 to v. 22	—57 or 61	—12
" 27	3 —	—62	—15 to v. 21	—65 or 66	—16 v. 16
FEB. 3	Septuagesima	Genesis 1 and 2 to v. 4	Revelation 21 to v. 9	Genesis 2 v. 4 or Job 38	Revelation 21 v. 9 to 22 v. 6
" 10	Sexagesima	—3	Matthew 22 v. 41 to 23 v. 13	—6 or 8	Acts 25
" 17	Quinquages.	—9 to v. 20	—26 v. 31 to v. 57	—12 or 13	Romans 2 to v. 17
" 20	Ash Wednes.	Isaiah 58 to v. 13	Mark 2 v. 13 to v. 23	Jonah 3	Hebrews 12 v. 3 to v. 18
" 24	1 in Lent	Genesis 19 v. 12 to v. 30 or 1 Samuel 2 v. 27 to v. 36	—1 v. 21	Genesis 22 to v. 20 or 23 or Isaiah 22 v. 15	Romans 8 to v. 18
MAR. 3	2 —	—27 to v. 41	—6 to v. 14	—28 or 32	—12
" 10	3 —	—37	—9 v. 30	—39 or 40	1 Corinthians 3
" 17	4 —	—42	—13 v. 14	—43 or 45	—9
" 24	5 —	Exodus 3	Luke 1 v. 26 to v. 46	Exodus 5 or 6 to v. 14	—14 v. 20
" 31	Palm Sunday	—9	Matthew 26	—10 or 11	Luke 19 v. 28 or 20 v. 9 to v. 21
APRIL 5	Good Friday	Genesis 22 to v. 20	John 18	Isaiah 52 v. 13 and 53	1 Peter 2
" 7	Easter Day	Exodus 12 v. 29	Revelation 1 v. 10 to v. 19	Exodus 12 v. 29 or 14	John 20 v. 11 to v. 19 or Revelation 5
" 14	Low Sunday	Numbers 16 to v. 36	1 Corinthians 15 to v. 29	Numbers 16 v. 36 or 17 to v. 12	—20 v. 24 to v. 30
" 21	2 af. Easter	—20 to v. 14	Luke 16	—20 v. 14 to 21 v. 10 or 21 v. 10	Ephesians 4 v. 25 to 5 v. 22
" 28	3 —	—22	—20 to v. 27	—23 or 24	Colossians 1 to v. 21
MAY 5	4 —	Deuteronomy 4 to v. 23	—23 to v. 26	Deuteronomy 4 v. 23 to v. 41 or 5	1 Thessalonians 2
" 12	Rogation S.	—6	John 3 to v. 22	—9 or 10	1 Timothy 1 to v. 18
" 16	Ascension	Daniel 7 v. 9 to v. 15	Luke 24 v. 44	2 Kings 2 to v. 16	Hebrews 4
" 19	S. af. Ascens.	Deuteronomy 30	John 6 v. 22 to v. 41	Deuteronomy 34 or Joshua 1	2 Timothy 2
" 26	Whitsunday	—16 to v. 18	Romans 8 to v. 18	Isaiah 11 or Ezekiel 36 v. 25	Galatians 5 v. 16 or Acts 18 v. 24 to 19 v. 21
JUNE 2	Trinity Sun.	Isaiah 6 to v. 11	Revelation 1 to v. 9	Genesis 18 or 1 and 2 to v. 4	Ephesians 4 to v. 17 or Matthew 3
" 9	1 af. Trinity	Joshua 3 v. 7 to 4 v. 15	John 18 v. 28	Joshua 5 v. 13 to 6 v. 21 or 24	James 1
" 16	2 —	Judges 4	Acts 1	Judges 5 or 6 v. 11	1 Peter 1 v. 22 to 2 v. 11
" 23	3 —	1 Samuel 2 to v. 27	—6	1 Samuel 3 or 4 to v. 19	2 Peter 3
" 30	4 —	—12	—9 to v. 23	—13 or Ruth 1	1 John 3 v. 16 to 4 v. 7
JULY 7	5 —	—15 to v. 24	—13 v. 26	—16 or 17	Matthew 2
" 14	6 —	2 Samuel 1	—18 to v. 24	—18 to v. 24	—6 v. 19 to 7 v. 7
" 21	7 —	1 Chronicles 21	—21 v. 37 to 22 v. 23	—27	—10 v. 24
" 28	8 —	—29 v. 9 to v. 29	—27	—27	—14 v. 13
AUG. 4	9 —	1 Kings 10 to v. 25	Romans 4	1 Kings 11 to v. 15 or 11 v. 26	—18 v. 21 to 19 v. 3
" 11	10 —	—12	—9 v. 19	—13 or 17	—22 v. 15 to v. 41
" 18	11 —	—18	—15 v. 8	—19 or 21	—26 to v. 31
" 25	12 —	—22 to v. 41	1 Corinthians 6	2 Kings 2 to v. 16 or 4 v. 8 to v. 38	Mark 1 to v. 21
SEPT. 1	13 —	2 Kings 5	—11 v. 17	—6 to v. 24 or 7	—5 v. 21
" 8	14 —	—9	—16	—10 to v. 32 or 13	—9 v. 2 to v. 30
" 15	15 —	—18	2 Corinthians 7 v. 2	—10 or 23 to v. 31	—12 v. 35 to 13 v. 14
" 22	16 —	2 Chronicles 36	Galatians 1	Nehemiah 1 and 2 to v. 9 or 8	Luke 1 to v. 26
" 29	17 —	Jeremiah 5 or Genesis 32	Acts 12 v. 5 to v. 18	Jeremiah 22 or 35 or Daniel 10 v. 4	Revelation 14 v. 14
OCT. 6	18 —	—36	Ephesians 6 v. 10	Ezekiel 2 or 13 to v. 17	Luke 7 v. 24
" 13	19 —	Ezekiel 14	Colossians 2 v. 8	—18 or 24 v. 15	—11 to v. 29
" 20	20 —	—34	1 Thessalonians 5	—37 or Daniel 1	—14 v. 25 to 15 v. 11
" 27	21 —	Daniel 3	1 Timothy 4	Daniel 4 or 5	—19 v. 11 to v. 28
NOV. 3	22 —	—6	2 Timothy 4	—7 v. 9 or 12	—22 v. 31 to v. 54
" 10	23 —	Hosea 14	Hebrews 3 v. 7 to 4 v. 14	Joel 2 v. 21 or 3 v. 9	John 1 v. 29
" 17	24 —	Amos 3	—10 v. 19	Amos 5 or 9	—5 v. 24
" 24	25 —	Ecclesiastes 11 and 12	James 3	Haggai 2 to v. 10 or Malachi 3 and 4	—8 v. 3

GENERAL INFORMATION, &c.

TABLE SHOWING THE DIFFERENCE OF LOCAL TIME BETWEEN SYDNEY AND THE UNDERMENTIONED PLACES.

Place	h.	m.	s.
San Francisco	5	50	0
Lisbon	10	36	29
Dublin	10	24	29
Gibraltar	10	21	17
Falmouth	10	19	28
Madrid	10	14	41
Edinburgh	10	12	33
London	10	0	0
Paris	9	50	29
Berne	9	30	5
Christiania	9	16	38
Rome	9	7	53
Berlin	9	6	17
Malta	9	1	45
Naples	8	55	49
Vienna	8	54	17
Buda	8	43	41
Stockholm	8	37	37
Constantinople	8	3	53
Alexandria	8	0	21
St. Petersburg	7	58	5
Suez	7	49	37
Aden	6	59	29
Bombay	5	7	59
Colombo	4	40	17
Madras	4	38	53
Calcutta	4	6	17
Moulmein	3	28	25
Penang	3	19	33
Bangkok	3	18	1
Singapore	3	5	25
Shanghai	1	54	1
Nagasaki	1	20	2
Perth, W. A.	2	0	0
Port Darwin	0	30	0
Adelaide	0	30	0
Wellington	2	39	0

The same time is now observed at Brisbane, Sydney, Hobart and Melbourne.

WEIGHTS AND MEASURES.

Liquid Measures.

60 Minims = 1 Drachm
 8 Drachms = 1 Ounce
 20 Ounces = 1 Pint
 8 Pints = 1 Gallon
 1 Minim = 1 Drop
 1 Drachm = 1 Teaspoonful
 2 " = 1 Dessert "
 4 " = 1 Table "
 1 Gal. Pure Water at 62° Fah. Bar. at 30 = 10 lb.

4 Gills = 1 Pint = 34.66 cubic inch
 2 Pints = 1 Quart = 69.318 "
 4 Qts. = 1 Gallon = 277.274 "

Beer, &c., Measure.

9 Gals. = 1 Firkin = 54 Gals. = 1 Hhd.
 18 " = 1 Kldkn. 108 " = 1 Butt
 36 " = 1 Barrel 216 " = 1 Tun

Wine Measure.

A Hogshead = 1/2 a Pipe or Butt, or 2 Qr.
 Casks, or about 52 1/2 Gallons
 A Pipe of Port = 115 Gallons, or about 56 dozen Bottles
 A Butt of Sherry = 108 Gallons, or about 52 dozen Bottles
 A Hogshead of French Wine = 46 Galls. or about 22 dozen Bottles
 An Aum of Rhenish = 30 Gallons, or about 15 doz. Bottles

WEIGHTS AND MEASURES—con.

Dry Measure.

4 Quarts = 1 Gallon
 2 Gallons = 1 Peck
 4 Pecks = 1 Bushel
 2 Bushels = 1 Strike
 4 Bushels = 1 Coomb or Sack
 8 Bushels = 1 Quarter
 5 Quarters = 1 Load
 10 Quarters = 1 Last

A Boll of Meal is 140 lbs., 2 Bolls being 1 Sack. Cereals are generally sold by weight. A Bushel of Wheat = 63 lbs.; Barley = 52 to 56 lbs.; Oats = 40 to 42 lbs.; Rye and Maize = 60 lbs. A Truss of Straw weighs 36 lbs.; Old Hay, 56 lbs.; New Hay (until 1st September), 60 lbs. A Load is 36 Trusses.

Avoirdupois Weight.

27 1/8 Grains = 1 Drachm
 16 Drachms = 1 Ounce = 437 1/2 grains
 16 Ounces = 1 Pound (16) = 7000 "
 14 Pounds = 1 Stone
 28 Pounds = 1 Quarter (qr.)
 8 Stones = 1 Hundredweight (cwt.)
 20 Cwts. = 1 Ton

A Cental = 100 lbs.

1 Cwt. = 1 Small Sack } Coal
 2 Cwt. = 1 Dble. " } Wgts.
 20 Cwt. or 10 Dble. Sacks = 1 Ton
 3 Bushels of Coke = 1 Sack
 12 Sacks = 1 Chaldron
 21 Chaldrons = 1 Score

Wool Weight.

7 Pounds = 1 Clove = 0 0 7
 2 Cloves = 1 Stone = 0 0 14
 2 Stones = 1 Tod = 0 1 0
 6 1/2 Tods = 1 Wey = 1 2 14
 2 Weys = 1 Sack = 3 1 0
 12 Sacks = 1 Last = 39 0 0
 240 Pounds = 1 Pack

Troy Weight.

3.17 Grains = 1 Carat
 24 Grains = 1 Pennywt. = 24 grs.
 20 Pennywts. = 1 Ounce = 480 "
 12 Ounces = 1 Pound = 5760 "
 Standard Gold consists of 22 parts pure gold alloyed with 2 parts of copper or other metal, and according to the quantity of alloy is called 9, 12, 15 or 18 carat, i.e., that quantity of pure gold out of the 24.

Diamond Weight.

16 Parts = 1 Grain (1/16ths Grains Troy)
 4 Grains = 1 Carat (1/4th " ")

Measure of Surface.

144 Square Inches = 1 Square Foot
 9 Square Feet = 1 Square Yard
 30 1/2 Square Yards = 1 Rod, Pole or Perch
 16 Poles = 1 Chain
 40 Square Poles = 1 Rood, 1,210 yards
 4 Roods or 10 Sq. Chains = 1 Acre, 4,840 yds.
 640 Sq. Acres = 1 Square Mile

Measure of Length.

12 Lines = 1 Inch = 1/12 Rod, Pole
 12 Ins. = 1 Foot = 1/10 or Perch
 18 Ins. = 1 Cubit = 1 Chain
 3 Feet = 1 Yard = 40 Poles = 1 Furlong
 6 Feet = 1 Fthm. = 8 Fur. = 1 Mile = 3 Miles = 1 League

60 Nautical Miles = 1 Degree
 69 1/2 Geograph. " = 1 Degree
 The English Mile is 1,760 yards; Scotch 1,984; Irish, 2,240.

ANGLO-FRENCH WEIGHTS AND MEASURES.

Weight.

1 Cwt. = 50.80 Kilos
 1 Lb. = 454 Grammes
 1 Oz. = 28 "
 1 Kilo. = 2 Lbs. 3 1/4 Ozs.
 5 Kilos. = 11 Lbs.

If 1 Kilo. cost 1 Fr., 1 Lb. will cost 4d., and 1 Cwt. will cost 40s. 7 1/2d.
 If 1 Lb. cost 1s., 1 Kilo. will cost Frs. 2.76

Measure.

1 Metre = 39 1/2 Inches
 1 Aune = 45 "
 1 Yard = 91 3/8 Centimetres

If 1 Metre cost 1 Fr., 1 Yard will cost 8 1/2d.
 If 1 Yard cost 1s., 1 Metre will cost Fr. 1.37

Liquid Measure.

1 Litre = about 1 1/4 Imperial Pints
 1 Quart = 1 Litre 14 Centilitres

If 1 Litre cost 1 Franc, 1 Gall. will cost 3s. 7 3/8d.
 If 1 Gall. cost 1s., 1 Litre will cost 27 1/2 cents.

ALMANAC FOR 1902.

PRINCIPAL ARTICLES OF THE CALENDAR.

Golden Number 3
 Epact... .. 21
 Solar Cycle 7
 Domical Letter E
 Roman Indiction 15
 Julian Period 6615

The Year 5663 of the Jewish Era commences on October 2.
 Ramadan commences on December 2.
 The Year 1320 of the Mohammedan Era commences on April 10.

Month	1	2	3	4	5	6	7	8	9	10	11	12	13	14	15	16	17	18	19	20	21	22	23	24	25	26	27	28	29	30	31
JAN.	1	2	3	4	5	6	7	8	9	10	11	12	13	14	15	16	17	18	19	20	21	22	23	24	25	26	27	28	29	30	31
FEB.	1	2	3	4	5	6	7	8	9	10	11	12	13	14	15	16	17	18	19	20	21	22	23	24	25	26	27	28	29		
MAR.	1	2	3	4	5	6	7	8	9	10	11	12	13	14	15	16	17	18	19	20	21	22	23	24	25	26	27	28	29	30	31
APRIL	1	2	3	4	5	6	7	8	9	10	11	12	13	14	15	16	17	18	19	20	21	22	23	24	25	26	27	28	29	30	
MAY	1	2	3	4	5	6	7	8	9	10	11	12	13	14	15	16	17	18	19	20	21	22	23	24	25	26	27	28	29	30	31
JUNE	1	2	3	4	5	6	7	8	9	10	11	12	13	14	15	16	17	18	19	20	21	22	23	24	25	26	27	28	29	30	31
JULY	1	2	3	4	5	6	7	8	9	10	11	12	13	14	15	16	17	18	19	20	21	22	23	24	25	26	27	28	29	30	31
AUG.	1	2	3	4	5	6	7	8	9	10	11	12	13	14	15	16	17	18	19	20	21	22	23	24	25	26	27	28	29	30	31
SEPT.	1	2	3	4	5	6	7	8	9	10	11	12	13	14	15	16	17	18	19	20	21	22	23	24	25	26	27	28	29	30	
OCT.	1	2	3	4	5	6	7	8	9	10	11	12	13	14	15	16	17	18	19	20	21	22	23	24	25	26	27	28	29	30	31
NOV.	1	2	3	4	5	6	7	8	9	10	11	12	13	14	15	16	17	18	19	20	21	22	23	24	25	26	27	28	29	30	
DEC.	1	2	3	4	5	6	7	8	9	10	11	12	13	14	15	16	17	18	19	20	21	22	23	24	25	26	27	28	29	30	31

CONCISE DIRECTORY.

We have inserted this short Directory for the use of our Subscribers under the impression that it will prove of utility to country and foreign residents who may desire to communicate with a firm in any particular Trade or Profession, and have no means at hand of knowing whom to address.

Acetyloid Gas Lamps—
 Worsnop & Co., Limited, Halifax, England.
 Manufacturers of Acetyloid and Acetylene Lamps for Domestic, Street, Railway, Carriage and Scientific purposes.

Acts of Parliament, Parliamentary Papers, Government Publications—
 (Sole Agents in England and Wales) Eyre and Spottiswoode, East Harding-st., E.C.

Aerated Pastry Flour—
 Coombs Eureka Aerated Flour Co., Ltd., Lenton Boulevard, Nottingham, and 8 & 8A, Farringdon-rd., London, E.C.
 Also Owners of Farrar's Pastry Roller (Patent). Tele. add.: "Eureka, Nottingham"; "Antidotal, London."

Alkali Manufacturers—
 The United Alkali Co., Limited, 30, James-street, Liverpool.
 Ammonia, Alkali, Bleaching Powder, Soda Crystals, Caustic Soda, Bicarb: Soda, &c.

Ammunition—
 The King's Norton Metal Co., Ltd., King's Norton, near Birmingham, England.
 Managing Directors: T. R. & T. A. Bayliss. Tele. add.: "Metal, King's Norton."
 Mrs. of all kinds of Military Ammunition for Small Arms and Quick-firing Guns. Rolled Brass, Copper, Nickel, &c. Brass and Copper Rivets and other Specialities.

Art Furniture Manufacturers—
 Oetzmann & Co., 62 to 79, Hampstead-road, London; 60 & 61, Grafton-street, Dublin; and 75, Union-street, Ryde, I. W.

Art Metal Workers—
 Hill & Smith, Brierley Hill Ironworks, Dudley, England. Art Metal Work in Iron, Bronze and Brass. Iron Fencing, Gates, Roofs, &c. Catalogues free.

Artesian Wells—
 Le Grand & Sutcliff, 125, Bunhill-row, London, E.C.
 Registered Trade Mark, "Abyssinian."

Artists Colours and Materials—
 Winsor & Newton, Limited, Rathbone-place, London, W.
 Manufacturers of Oil & Water Colours & Materials of every description for Artists.

Bibles and Prayer Books—
 Henry Frowde, Oxford University Press Warehouse, Amen Corner, London, E.C.
 (Of all booksellers throughout the World.)

Billiard and Bagatelle Table Maker—
 George Edwards, 134, Kingsland-road, London, N.E.
 All Tables have the low and fast Cushions, not affected by any climate.

Bird Seeds—
 R. Hyde & Co., Camberwell, London.
 Aesthetic Bird Seeds, Parrot Food, Shell Gravel, &c., in packets. Sold everywhere.

Biscuit and Oat-Cake Manufacturers.
 M'Vitie & Price, The St. Andrew Biscuit Works, Edinburgh.
 Specialities: Scotch Oat-cakes, Shortbread and high-class Biscuits. Highest Awards, Calcutta and Edinburgh Exhibitions.

Bolt & Nut, Screw & Rivet Makers—
 Herbert W. Periam, Flotgate-street Works, Birmingham. Also maker of Washers & Roofing Nails.

Boots and Shoes—
 Derham Brothers, Limited, Bristol, Northampton and Warmley. Wholesale and Export only. The "Z" and "Aerial" Brands. Tennis, Cycle and all other descriptions.

Borax Manufacturers—
 H. Coghill & Son, Newcastle, Staffordshire, and 19, Hanover-street, Liverpool.
 Borax Brand "Wood" and Boracic Acid. London Agents, Morris Ashby, Ltd., 17, Laurence Pountney-lane, E.C.

Brattice Cloth—
 J. H. Peck & Co., Limited, Tarpaulin Works, Wigan. (Established 1808).
 All kinds of Brattice Cloth, Railway, Cart and Wagon Covers.

Bunting Manufacturers—
 E. Riley & Co., Providence-street, Mills, Leeds.

Carriage Manufacturers—
 Henry Whitlock, Limited, Holland Gate, Kensington, and Turnham Green, London, W.

Church Furniture Manufacturers—
 Jones & Willis, 43, Great Russell-street, London; Edmund-street, Birmingham.
 Concert-street, Liverpool.

Cigars—
 Darvel Bay, British North Borneo.
 J. R. Freeman & Son, Hoxton, London, N.
 Trade Mark, "Flying Horse."

Cinematographs—
 The Warwick Trading Co., Limited, 4 and 5, Warwick-court, High Holborn, London, W.C.
 Manufacturers and Exporters of Cameras and Projecting Machines, Film Subjects, Sensitized Celluloid Films & all accessories.

Clothing Mfrs. & Cloth Merchants—
 Grainger & Smith, Limited, Principal Warehouse and Factories, Dudley, also 64, Aldermanbury, London, Carr's-lane, Birmingham, Trinity-street, Hanley, Mount-street, Nottingham, Guildhall-street, Preston, and Victoria-street, Belfast.
 Men's, Youths' and Juvenile Clothing, Woolen Cloth and Tailors' Trimmings.

Coal—
 The Wharcliffe Woodmoor Colliery Co., Limited, Barnsley.
 Steam Coal, House Coal, Gas Coal, Cobbles, Nuts, Smelting Coke.

Cocoa, Cocoa Essence and Chocolate Manufacturers—
 James Epps & Co., Limited, Manufactory: Holland-street, Blackfriars, London.

Coffee: Raw, Roasted and French (Red, White and Blue).
 Saml. Hanson, Son & Barter, 47, Botolph-lane, London, E.C.

Colonial and Indian Agents and General Merchants—
 James Porter & Co., 13, Fenchurch-avenue, London, E.C. (Indents promptly executed.)

Coloured Papers—
 Thomas & Green, Limited, Soho Mills, Woodburn, Bucks, and 196, Upper Thames-street, London, E.C.
 Tele. Address: "Thomas, Woodburn," and "Rainbow, London."

Condensed Milk—
 The Anglo-Swiss Condensed Milk Co., 10, Mark-lane, London, E.C.
 "Milkmaid" Brand, Swiss and English. "Ideal" Brand of Unsweetened Condensed Milk, sterilized, enriched with cream.

Confectioners—
 M. A. Craven & Son, Ebor Confectionery Works, York.

Continental Goods, Produce & Liquids.
 Import and Export Trade, Commission, Shipping and Insurance Agent.
 C. H. W. Dreyer, Hamburg, Steintw. 8, Germany. Box Post Office No. 1.

Copying Apparatus Manufacturers—
 The Copying Apparatus Co., Limited, 123, Cannon-street, London, E.C.
 The Simplex Hektograph, The Neo-Cyclostyle, The A.B.C. Copier, The Automatic Cyclostyle, The Edison Mimeograph, &c. Write for circulars, containing prices, &c.

Cotton Bags—
 From 1 to 140 lbs. in white and unbleached Calico. T. & W. Judge, Original and Largest Manufacturers and Printers, Cumberland Works and Manchester Works, Kennington, London. Tele. add.: "Cotton Bag, London."

Cranes and Lifting Machinery—
 Thomas Smith, Steam Crane Works, Old Foundry, Rodley, near Leeds. London Office: 9, Victoria-street, Westminster, S.W.
 Telegraphic Address, "Smith, Rodley."

Cyder (Devonshire Champagne)—
 John Symons & Co., Limited, Totnes, Devon, & Ratcliff, London, E.
 Special brands: "Imperial" & "Apple and Blossom." Sole Makers of Symonia and Sydrina.

Disinfectors—
 Manlove, Alliott & Co., Ltd., Engineers, Nottingham. Also Laundry Machinery and Hydro-Extractors.

Dog Biscuits—
 Walker, Harrison, & Garthwaites, Ltd., Phenix Biscuit Works, Ratcliff Cross, London, E.

Emery Wheel Makers—
 Luke & Spencer, Limited, Broadheath, Manchester. Also Manufacturers of Grinding and Polishing Machinery. Catalogue on application.

Enamelled Letters and Tablets—
 Garnier & Co., Inventors & Actual Makers, 86, Farringdon-street, London, E.C., and Ludgate Enamelling Works, Willesden.

Engines—Steam, Gas and Oil—
 Robey & Co., Limited, Globe Works, Lincoln, England.

Export Provision Merchants—
 Griffiths, McAlister & Co., 3, Mersey-street, Liverpool.
 Contractors to H.M. Government. First Class Mail Steamers, Officers' Messes, &c. Cable, "Coomassie."

Fancy Boxes, Cardboard and Wood.
 G. W. Munt & Sons, Cross-street Works, Hatton-hold, London, E.C.
 Boxes for all purposes to order, round square, flat folding, collapsible, &c.

Fire Brick Manufacturers—
 E. J. & J. Pearson, Limited, Fire Clay Works, Stourbridge.

Firewood Splitting, Bundling, "Ideal" Saw Guards, Benches and Sharpening Machinery—
 M. Glover & Co., Patentees and Sole Makers, Leeds.

Fireworks and Ships' Pyrotechnic Signals Manufacturers—
 C. T. Brock & Co. (Sole Pyrotechnists to the Crystal Palace, since 1864). Sutton, Surrey. Tele. and Cable add. "Fireworks, London."

Flags—
 E. Riley & Co., Providence-street Mills, Leeds.

Fuse for Blasting—
 Safety Fuse, Electrical Detonator Fuses, Electrical Powder Fuses.
 William Bennett, Sons & Co., Camborne, Cornwall, England.

Game & Poultry Foods—
 Walker, Harrison & Garthwaites, Ltd., Phenix Biscuit Works, Ratcliff Cross, London, E.

Gas Engine Manufacturers—
 Crossley Brothers, Limited, Openshaw, Manchester.
 Gas Engines from 2 man-power to 1,000 h.p.

Gas Meter Manufacturers—
 Thomas Glover & Co., Limited, 214-222, St. John-street, Clerkenwell Green, London, E.C.
 New Improved Prepayment Meter for Pennies, Shillings or any coin.

Gas, Water and Sanitary Fittings, and Hot Water Apparatus—
 The Thames Bank Iron Co., Upper Ground-street, London, S.E.

Gauge Glass Manufacturers—
 Tomey & Sons, Tay Glass Works, Perth, Sole Makers of the "Eureka" Gauge Glass.

Glass Bottle Manufacturers—
 Cannington, Shaw & Co., Limited, St. Helen's, Lancashire, England.
 Manufacturers of Glass Bottles, Codd's Ebonite Screw and Crown Cork Mouth Confectioners' Bottles, Boxes and Cases.

Grab Dredging and Excavating Machinery (The Kingston Patent)
 Rose, Downs & Thompson, Limited, Old Foundry, Hull, and 12, Mark-lane, London, E.C.

Horse Hair Manufacturers—
 Edward Webb & Sons, Copenhagen-street, Worcester.
 Hair Cloth of all kinds, Curled Hair, Horse Hair Carpet, Hop and Cider Cloths, Hair Mattresses, Brush Drafts.

Horticultural Builders—
 Boulton & Paul, Limited, Rose Lane Works, Norwich.

Hydraulic Machinery, Presses, Pumps, Accumulators, Riveters, Valves, &c.
 Henry Berry & Co., Ltd., Leeds.

Indiarubber Manufacturers—
 P. B. Cow & Co., Works, Streatham, 46 & 47, Cheapside, London, E.C.
 Coats, Cloaks, Air and Water Goods, Tennis, Cricket Hold-alls, Mats, Garden Hose, &c., &c.

Lamp (Street, &c., Manufacturers, Electric Light Pillars, Brackets, &c.—
 Walter Macfarlane & Co., Architectural, Sanitary & General Ironfounders, Saracen Foundry, Glasgow.

Launch Builders—

The Thames Valley Launch Co., Ltd., Chief Offices and Works, Weybridge, Surrey. Designers and Builders of all kinds of Launches for Home or Abroad. Estimates Free. W. Rowland Edwards, A.M.I.E.E., Managing Director.

Lenses for Ship and Railway Lamps—

Jas. Stevens & Son, Victoria Glass Works, Birmingham. Lenses, Port-hole glasses, bent glasses, Bevelled glasses, and glass of every description used in Steamers or Railways.

Lifts—

R. Waygood & Co., Limited, Falmouth-road, London, S.E.

Malted Food for Infants & Invalids—

Coombs Eureka Aerated Flour Co., Ltd., Lenton Boulevard, Nottingham, & 8 & 8A, Farringdon-road, London, E.C. Also Makers of Custard, Blanc Mange, Egg and Light Pastry Powders (or Baking Powder) and Fruit Salt.

Mantle Manufacturers (to the Trade and Shippers only)—

Corby, Palmer and Stewart, 35, 40, 41, St. Paul's Churchyard, London, E.C. Ladies' and Children's Mantles, Jackets, Capes, Blouses, Mackintoshes, Imperial Cloaks, Fur Capes and Costumes.

Mapseller (Home, Colonial, & Foreign)—

Edward Stanford, 12, 13 and 14, Long Acre, London, W.C. Geographer to Her Majesty the Queen. Catalogues free on application.

Mining, Quarrying and Agricultural Tools—

The Hardy Patent Pick Co., Limited, Sheffield.

Moulding and Picture Frame Mfrs.—

Beckmann Bros., 26 & 27, Cow Cross-st., London, E.C. Telno., 952, Holborn.

Musical Instrument Manufacturers—

Thomas Dawkins & Co., 17, Charterhouse-street, London, E.C. Musical Instruments of every description. Wholesale and Export. Agents for Julius Pfaffe, Court Piano Manufacturers, Berlin.

Music Publishers—

Edwin Ashdown, Limited, Hanover-square, London, W., New York and Toronto.

Needle, Fish-Hook and Fishing Tackle Manufacturers—

Henry Milward & Sons, Limited, Washford Mills, Redditch. Sole Makers of the "Calyx-eyed" easy threading and "Best Best" Needles. Makers of the very best Fishing Tackle.

Oakum Manufacturers—

Anglo-American Rope and Oakum Co., Liverpool. All kinds Machine Spun and Unspun Oakum. Awarded 15 Medals and Diplomas. Established 1868.

Office Fitters and Furniture Mfrs.—

Newson & Co., Finsbury House, Finsbury-square, & 2, 4 & 6, Worship-st., London, E.C. Mfrs. of all kinds of Office Furniture and Fittings. Largest Stock in London. Telephone, No. 2539 Avenue.

Oil Engine Manufacturers—

Crossley Brothers, Limited, Openshaw, Manchester. Oil Engines for working with common petroleum oil.

Oil Seed Crushing, Refining and Filtering Machinery—

Rose, Downs & Thompson, Limited, Old Foundry, Hull, and 12, Mark-lane, London, E.C.

Optical Lanterns—

John Wrench & Son, 50, Gray's Inn-road, London, W.C. Manufacturers of Optical Lanterns, Limelight Apparatus and Slides.

Opticians—

Ross, Ltd., Manufacturers, 111, New Bond-street, London, W. Microscopes, Telescopes, Field Glasses, Photographic Lenses, &c., &c. Telegraphic Address: "Rossano, London."

Outfitters, Universal Providers, &c.—

William Whiteley, Limited, 31 to 55, Westbourne-grove, 50 to 53, Kensington Gardens-square, and 147 to 159, Queen's-road, Bayswater, W.

Paperhangings—

Wm. Woollams & Co., Sole Address—110, High-st., Marylebone, London, W. (ORIGINAL MAKERS) Artistic Wall Papers, free from arsenic.

Paper Makers—

Alex. Pirie & Sons, Limited, Stonywood Works, Aberdeenshire, & 97, Farringdon-street, London, E.C. Tele. Address: "Pirie, Aberdeen."

Patent Agents—

Jensen & Son, 77, Chancery-lane, London, W.C. Patents, Designs and Trade Marks secured all over the World.

Pavement Lights—

The St. Pancras Iron Work Co., Ltd., St. Pancras-road, London, N.W.

Photographic Apparatus—

George Houghton & Son, 83 and 89, High Holborn, London, W.C. Hand and Stand Cameras, and all Materials.

Photographic Dry Plates & Papers—

Cadett & Neall, Ltd., Ashted, Surrey, England. "Cadett" Plates. Largest Home Sale. The "Spectrum" Plate, with its Light Filter, is revolutionising Photography. Speciality: X-Ray Paper.

Photographic Shutters—

The Thornton-Pickard Manufacturing Co., Limited, Altrincham. Original and Largest Makers of Shutters for every class of work.

Picks—

The Hardy Patent Pick Co., Limited, Sheffield.

Platinum Refiners and Dealers—

Johnson, Matthey & Co., Ltd., 74-81, Hatton-garden, London, E.C. Platinum Apparatus—Sheet, Foil, Wire, Crucibles, &c. Gold and Silver Refiners.

Polishing Powder—

J. F. Baumgartner & Co., Limited, Newman-street, London, W. "La Brillantine" Metallic Powder. The best and cheapest Polishing Powder for Metals and Brass, especially Brass.

Portable Wood & Iron House Builders.

Boulton & Paul, Limited, Rose Lane Works, Norwich.

Postage Stamp Merchants and Philatelic Publishers—

Whitfield King & Co., Ipswich. Foreign and Colonial Postage Stamps for Collectors. Publishers of Stamp Albums and Philatelic Catalogues. Estab. 1869.

Printers' Rollers and Composition—

"The Durable" Printers' Roller Co., Ltd., Charles-st., Hatton-gdn., London, E.C. Contractors to H.M. Printing Offices. Composition for Home and Export. (Est. : 1868.)

Printing Machinery of all kinds—

William Dawson & Sons, Ashfield Foundry, Otley, Yorks. Inventors and Patentees of the Original "Wharfedale."

Railway Rolling Stock—

The Ashbury Railway Carriage & Iron Co., Limited, Openshaw, Manchester. London Office, 7, Victoria-street, Westminster, S.W. Railway Carriages and Wagons of every description. Railway Ironwork, Wheels and Axles, Iron Roofing & Contractors' Plant.

Road Materials—

Mountsorrel Granite Company, Ltd., Mountsorrel, near Loughborough. Full Particulars & Prices on application. Tele. address: "Granite, Mountsorrel."

Saddlery—

Geo. Smith & Co., Manufacturers, 151, Strand, London. Manufacturers of Saddlery, Harness, Whips, Bags, Portmanteaus, &c. Catalogues Free on application.

Safes, Iron and Steel Doors—

Frederic Whitfield & Co., 11 & 12, St. Andrew's-hill, London, E.C. Works: Oxford-street, Birmingham.

Salt for the Table, the Bath and the Garden—

D. Bumsted & Co., 36, King William-street, London, E.C.

Sanitary Potter—

S. H. Rowley, Swadlincote, near Burton-on-Trent. Patentee and Maker of the "Wash-out" Closet, and of Wash-down Closets, Pedestal Closets, Lavatories, Sinks, Urinals, &c., of finest Quality.

Scales, Weighing Machines, Weigh-bridges, &c., of all descriptions—

Henry Pooley & Son, Ltd., 29 & 31, Manchester-street, Liverpool, 89, Fleet-st., London, E.C. Tele. Add.: "Pooley," Liverpool or London.

Scotch Whisky Distillers & Blenders—

Chas. Mackinlay & Co., 87 & 89, Constitution-street, Leith, N.B. Also at Glen Mhor Distillery, Inverness, N.B. (Mackinlays & Birnie.)

Screwing Machines—

Charles Winn & Co., Granville-st., Birmingham, 41, Holborn Viaduct, London, 26, Grey-st., Newcastle, and 94, Hope-st., Glasgow.

Seed Growers and Merchants—

Sutton & Sons, Reading. Seedsmen by Sealed Warrants to H.M. the Queen & H.R.H. the Prince of Wales. Farm Seeds, Garden Seeds and Bulbs, specially selected & packed for all parts of the World. Full Price Lists free on Application.

Ship Biscuits—

Walker, Harrison & Garthwaites, Ltd., Phoenix Biscuit Works, Ratcliff Cross, London, E.

Shovels and Spades—

The Hardy Patent Pick Co., Limited, Sheffield.

Slates, Slate Slabs, Cisterns, &c., &c.

Davies Bros., Portmadoc, N. Wales. Blue, Red & Green Roofing Slates, Slate Slabs, Urinals, Lavatories, Cisterns, &c. Home and Export. Telegrams: "Seivad."

Soap Manufacturers—

The United Alkali Co., Limited, "Camden" Soap Works, Runcorn, Cheshire. All classes of Tallow, Bar, Brown and Toilet Soaps. "Cashmere," "Acme" and other Brands.

Stable Fittings—

The St. Pancras Iron Work Co., Limited, St. Pancras-road, London, N.W.

Staircases (Iron)—

The St. Pancras Iron Work Co., Limited, St. Pancras-road, London, N.W.

Steel Pen Maker—

W. Mitchell, 44, Cannon-street, London, E.C., and Washington Works, Cumberland-street, Birmingham.

Tile Manufacturers—

Craven Dunnill & Co., Limited, Jackfield, R.S.O., Shropshire. Tiles of all kinds, Encaustic, Plain, Enamelled, Glazed, Majolica, Printed, Painted. Lustre, Ceramic Mosaics, Constructional Faience. London: 37, Maddox-street, W.

Tobacco Manufacturers—

The Richmond Cavendish Co., Limited, Liverpool. Plug and Cut Tobaccos and Cigarettes. Specialities: "Richmond Smoking Mixture," "Pioneer Gold Flake."

Tobacco Pipe Manufacturers—

Allen & Wright, 26, Poultry, London, E.C., 217, Piccadilly, London, W. Makers of finest quality only, Briar and Meerschaum Pipes. Brand "A & W." Illustrated Catalogues, Post Free.

Typewriters—

Remington Standard. (New Model.) All kinds of Typewriter Supplies. Wyckoff, Seamans & Benedict, Proprietors, 100, Gracechurch-street, Telephone Nos. 2464 & 2854. [London, E.C.]

Ventilator Manufacturers—

James Howorth & Co., Victoria Works, Farnworth, near Bolton, and Manchester, England.

Waterproof Paper & Canvas Mfrs.—

Thomas Briggs (Manchester), Limited, Manchester. Tarpaulin, Oil Cloth, Canvas and Paper Mfrs. and makers of Tents and Wagon Covers.

Weed Killer—

Acme Chemical Co., Ltd., Tonbridge, Kent, and Bolton, Lancs. The "Acme" Weed Killer permanently destroys Weeds and Scrubs growing upon walks, roads, &c., by one application.

Wire Rope and Ropeways—

Bullivant & Co., Limited, 72, Mark-lane, London, E.C. Wire Ropes for all purposes. Aerial Ropeways, Suspension Bridges, &c.

Wood Block Flooring—

Goddard & Sons, Patent Wood Block Flooring Works, Farnham, Surrey.

Woollen Cloth Manufacturers—

Apperly, Curtis & Co., Limited, Dudbridge Mills, Stroud, Glos. Vicunas, Serges, Overcoatings, Suitings, &c., &c. 21 Gold Medals and Highest Awards.

Memoranda of Reference, &c.

As Addresses, Quotations, and other matters of Interest.

38
 Dec. 6. 1900.
 Lynch. owes - 11 Hds 1 qr each - (all previous casks having been returned.)
 (Ap. 24) 4 Hds - 5 qrs - 5 Hds - leaving 9 Hds - 2 qrs owing + 23 Hds 9 qrs (see May 14.)

Miss Oak
 (Dressmaker) Constitution Hill
 Petersham

R. Barrett
 Box 1428 G.P.O.
 Sydney.

Mrs R. P. Dickson
 Bolwara
 via ~~Barbuda~~ Caribs
 Northern Queensland.

Mrs Anderson
 Laurie
 Hill St.
 Albion
 Brisbane.

Herard Home Coleman Esq -
 71 Bucknole Road
 Camden Road
 London N.

Mrs N. S. Fell
 Kilcreegan
 Lower Spit Road
 Mosman

Commonwealth Day

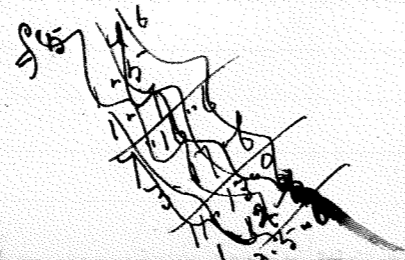
Dec 31

1 TUESDAY [1-364] Circumcision. Bank Holiday, Scotland.
Holiday, Stock Exchange

*Commonwealth Day - Federation of the
Australian States*

2 WEDNESDAY [2-363]

Fred White (tying up off vines)



3 THURSDAY [3-362]

*H. Bridge
Geo Bridge
Joe Bridge } yg. vines -
Fred White
Vic Bridge (new cellar)
Tom. Mitchell (old cellar -)*

Stamps 5/-

4 FRIDAY [4-361]

Revised Sent Stock Returns

*H. Bridge (old vines)
Geo Bridge
Joe Bridge } off vines
Fred White
Vic Bridge } new cellar -
Tom Mitchell*

*196 Acres. Freehold.
Horses - 3 Draught, 2 Saddle, 1 Light Horse
Cattle - 31.*

5 SATURDAY [5-360] Dividends due at Bank. O 0h 14m A.M. (Greenwich)

*H. Bridge old vines
Geo Bridge
Joe Bridge } off vines
Fred White
T. Mitchell (new cellar)
Vic Bridge*

6 SUNDAY [6-359] Twelfth Day

7 MONDAY [7-358]

W. Bridge }
J. Mitchell }
Geo. Bridge } Youngones -
Vic Bridge }
Joe Bridge }
Fred White }



8 TUESDAY [8-357] Cambridge Lent Term begins

W. Bridge (pl yg vines)
Geo. Bridge }
Joe Bridge } yg vines
Fred White }
Tom Mitchell }
Vic Bridge } drawing frame for cellar -

9 WEDNESDAY [9-356] Fire Insurances expire

W. Bridge (for Geo. Bridge)
Tom Mitchell }
Vic Bridge } drawing frame
Fred White (yg vines)

J. Hamilton
Gentles for new cellar 10/-

10 THURSDAY [10-355]

J. Lynch & Co's P. F. £38.7.10 due. pd.

W. Bridge (for Geo. B.)
W. Drayton }
J. Mitchell } putting new casks together
Vic Bridge } today drawing frame - today getting up -
Fred White (yg vines)

11 FRIDAY [11-354] Hilary Law Sittings begin

W. Bridge (yg vines)
W. Drayton } (casks)
J. Mitchell }
Vic Bridge } drawing blocks for new cellar
Fred White } yg vines -

Recd. J. C. F. Lindeman

Postal note 5/- stamps 1/-
poundage 2/- = 4/6

Chq. 130.11.9-

Wages 20/-

Wine 129--8
1.3.4
129 17 4

Freights 2.14.5

12 SATURDAY [12-353] 8h 38m P.M. (Greenwich)

W. Drayton }
J. Mitchell } (casks)

13 SUNDAY - 1 after Epiphany [13-352]

14 MONDAY [14-351] Oxford Lent Term begins

W. Drayton Casks
Vic Bridge " (today)
Fred White yg. vines.

J. Mitchell
1 Duty stamp

I went to D. M. on the way to Sydney -

15 TUESDAY [15-350]

W. Drayton } Casks
J. Mitchell }
Vic Bridge } to London for timber
~~Joe Bridge~~ }
Fred White } yg. vines -

16 WEDNESDAY [16-349]

W. Drayton } Casks
J. Mitchell }
Joe Bridge (to B.)
Fred White (yg vines)
Vic Bridge (to London for fencing)
~~Joe Bridge~~ (") -

31 Days

17 THURSDAY [17-348]

W. Drayton (Gutter)
J. Mitchell ")
W. Bridge } yg vines)
Fred White }
Joe Bridge (to Berback) } S. Corner (Perdrian)
25ft. Smooth Rose Suction
Hose 2 1/2" - £2.19.5.
Elliott Bros. 2 Gal. Sulphuric £1-1.0
2 " Cam. Soda

J. M. returned from Sydney

18 FRIDAY [18-347]

W. Drayton } Gutter
J. Mitchell }
W. Bridge } yg vines
Fred White }
Vic Bridge (drawing timber fencing) }
P. Lyrell.
12ft. 1 1/2" Arma Hose 3/4 - 1.5.-
50 " 1 1/2" Eureka " 1/8 - 4.5.4
12 " " " " 1
£6.8.4

Perdrian & Co.
60ft. 1 1/2" Eureka Hose 1/8 = £5.
Less 5% =

Cedar Gutter finished -

19 SATURDAY [19-346]

W. Bridge (yg vines)
W. Drayton } Gutter
J. Mitchell }
Vic Bridge (unloading timber)
Fred White (yg vines)

20 SUNDAY - 2 after Epiphany [20-345] 2h 36m p.m. (Greenwich)

21 MONDAY [21-344]

J. Mitchell (cellar),
H. Drayton (casks),
H. Bridge today of wine
Fred White 1/2 " " "
Vic Bridge (to Br.)

5 shls to 20
25 " 20
25 " 20

J. Lynch & Co
3 shls to 4 - 182 Gal. wine @ 10/- = £9.11.8
5 shls to 20 - 6 qrs. 21 = 495 " " @ 11/- = £22.13.9
£30.5.5

Capital - Farnham
200 Fencing Rails 2/50

J.C. Inayne 1 Camp 1/6 -
Stamps 2/-

22 TUESDAY [22-343]

H. Bridge (new cellar),
H. Drayton (casks),
J. Mitchell (filling wine),
Vic Bridge (fr. Br.)

Queen Victoria died

23 WEDNESDAY [23-342]

J. Mitchell (cellar),
H. Drayton (new cellar),
H. Bridge (" " "
Vic Bridge (drawing wood)

24 THURSDAY [24-341]

J. Mitchell (new cellar),
H. Bridge (new cellar),
Vic Bridge } to Br. -
Herbert Bridge } to Br. -

C. F. Ludeman
749 Gal. White wine to 25, 23 @ 1/2 = 43.13.10
901 " Hermitage 16, 33 @ 1/2 = £52.11.2.
Freight 33 qrs. 19 shls - £12.8

Geo. Bridgell
Chq. £1. -

J. C. Inayne 2 Camps 1/6 = 3/-

25 FRIDAY [25-340] Conversion of St. Paul

Ernest Hanson's money pit - 26 bulks @ 1/4 = £1.14.8

J. Mitchell (filling wine),
H. Bridge (new cellar),
Herbert Bridge } fr. Br. -
Vic Bridge } fr. Br. -

Stamps 2/6

26 SATURDAY [26-339]

Fred White today (of wine)

27 SUNDAY - 3 after Epiphany [27-338] 9h 52m A.M. (Greenwich)

28 MONDAY [28-337]

J. Mitchell (filling wine)

5935

31 THURSDAY [31-334]

J. Mitchell }
H. Bridge } cellar.
Vic }
Fred White (off vines)

J. Mitchell
5 lengths Quater = 57
10 1/2 Screws & Hanks 1/3
16.3

Pa Fred White
24 days 1/6 = £1-16.0

Geo. Bridge
1 Spring sheet 15.6
1 Kapok mattress 16 -
1 " pillow 2 3
1.10.9

1 FEB FRIDAY [32-333] Partridge and Pheasant Shooting ends

29 TUESDAY [29-336]

J. Mitchell }
H. Bridge } cellar
Vic " }
Fred White (off vines)

Ans. 21-73
14 Hds. 2 qts = 915 Gals term. @ 11^p = £41-18-9

J. Mitchell }
H. Bridge } cellar
Vic Bridge }

Last day for sending Income Tax Return

30 WEDNESDAY [30-335]

J. Mitchell (fixing new cellar)
H. Bridge " ")
Vic Bridge (B.)
Fred White (off vines)
Geo Bridge (today) (fixing new cellar)

2 SATURDAY [33-332] Purification V. Mary. Candlemas. Scottish Quarter Day

No work -

Recd f. E. G. & J. Green
Cheque £12.5.7

H. Elliott
Stakes £9-8-0

3 Septuagesima SUNDAY [34-331] 0 3h 30m P.M. (Greenwich)

9.6
1901
1/2 6
11

4 MONDAY [35-330]

Walter Howell P. H. £10.10.0 due.

J. Fitchell } Cellar
H. Bridge }
Vic Bridge (to Br.)

J. C. Inayne 1 camp 1/6

5 TUESDAY [36-329]

J. Fitchell }
H. Bridge } Cellar (137 Hds.) J. Lynch & Co
Geo. Elliott } 799 Gals @ 11/- = £ 36.12.5.
Vic Bridge (Fr. Br.)

S. Corner -
Freight on Acid 5/-
Paid for S. C. 1 freight - 11-9
16-9

Stamps 2/6

6 WEDNESDAY [37-328]

~~Last day for sending Invoice Tax Return~~

J. Fitchell Cellar
H. Bridge "
Geo. Elliott "
Vic Bridge "
Herb. Bridge today.

C. S. Corner
Freight on Acid 5/-

28 Days

7 THURSDAY [38-327]

Began Vintage

1382 Buckets Harvest.

(Walter leaves J. J. grapes)

Geo. Elliott
J. Fitchell
H. Bridge
Herb. Bridge
Geo. Bridge

8 FRIDAY [39-326] Half Quarter Day

(902 term today)

Geo. Elliott
J. Fitchell
H. Bridge
Herb. Bridge
Geo. Bridge
Ted. Bridge

(J. J.)

9 SATURDAY [40-325]

1725 Bkts. Harvest.

Geo. Elliott
J. Fitchell
H. Bridge
Herb. "
Geo. "
Ted. "

(J. J. & Clydesdale)

10 Sexagesima SUNDAY [41-324]

11 MONDAY [42-323] c 6h 12m P.M. (Greenwich)

1469 Buckets. Germ.

Geo. Elliott
J. Mitchell
W. Bridge
Geo. Bridge
Vic. Bridge (kBr)
Geo. Philipp
B. Woodland
J. Fogarty
Herb. Bridge
Ted. Bridge

J. Lynch & Co.
16. Shas. Germ. @
9+2 Gals. C.
About 275 Gals. Germ @ 1/11 = £13.15.
637 " " @ 1/11 = £29.3.11
£42.18.11

J. C. Frazne 1 camp -

Geo. Elliott
Geo. Philipp
J. Mitchell
W. Bridge
Geo. Bridge (for W.M.D.)
Vic. " (kBr.)
B. Woodland
J. Fogarty
Herb. Bridge
Ted. Bridge
F. Broadbent (to camp)
R. Carroll (to day)
J. Keyland (to day)

12 TUESDAY [43-322]

1117 Bkts. Germ -

Elliott Bro.
1 Single Burette stand 3.6
1 Burette 25.c.c. 3.6
2 Pipettes 5 c.c. 1
4 Conical Beakers 1/6 2
2 3" Funnels 1/3 6
3 Glass Rods 1/1 2
1 pkt. Filters 4 1/2" c/6 6
6 Litmus Blue 3/6 1.5
6 " Red. 4/6 1.5
2 oz Sol Phenolphthalein 1/1 2
" Decoloral Soda 7/6 2.6
Case 1
19.2

13 WEDNESDAY [44-323]

472 Bkts Germ (to day)

Stamps
Geo. Elliott
Geo. Philipp
J. Mitchell
W. Bridge (to camp)
Geo. Bridge (for W.M.D.)
Vic. Bridge
B. Woodland
J. Fogarty
Herb. Bridge (to day)
Ted. Bridge (to day)
F. Broadbent

14 THURSDAY [45-320] St. Valentine

No picking -

Geo. Elliott
Geo. Philipp
J. Mitchell
W. Bridge
Vic. Bridge (for W.M.D.)
B. Woodland
J. Fogarty
Herb. Bridge
Ted. Bridge
F. Broadbent

Cellar exp -
10 Buckets 7/ 1.0.0
6lbs Linnseed meal 9/ 2 -
1 Cut Rock Sulphur 11
1 Paint remaining lamp 17.6
1 Hoop Driven 66

15 FRIDAY [46-319]

No picking

Geo. Elliott
Geo. Philipp
J. Mitchell
W. Bridge
B. Woodland
J. Fogarty
Herb. Bridge (for W.M.D.)
Ted. Bridge
Vic. Bridge (for W.M.D.)
F. Broadbent

Pat J. Keyland
535 Buckets 1.3.4
2 days in Cellar 2.6
£1.5.7

16 SATURDAY [47-318]

Geo. Elliott
Geo. Philipp
J. Mitchell
W. Bridge
B. Woodland
J. Fogarty
Herb. Bridge
Ted. " (for W.M.D.)
Vic. " (for W.M.D.)
F. Broadbent

17 Quinquagesima SUNDAY [48-317]

18 MONDAY [49-316]

654 Bkts. Alrm.
443 " Shiraz

Total Buckets of old Alrm. 7721

1 Refrigerator \$39.13.9.

Mauri Prod. 1 Rotary Pump \$13
less 2 1/2% - 12.13.6

- Geo Elliott-
- Geo Phillips
- J. Mitchell
- H. Bridge
- B. Woodland
- J. Fogarty
- Herb. Bridge
- Geo Bridge
- Vic Bridge (for d. in Pt.)
- J. Broadbent
- G. Howell
- Geo Bridge

- Geo Elliott
- Geo Phillips
- J. Mitchell
- H. Bridge
- B. Woodland
- J. Fogarty - 1/2 days
- Herb. Bridge 1/2 days
- Geo Bridge
- Vic Bridge (for d. in Pt.)
- J. Broadbent (1/2 days)
- Geo. Howell 1/2 days
- Geo Bridge
- R. Carroll today

Stamps 2/8 1/2

- Geo Elliott
- Geo Phillips
- J. Mitchell (1/2 days)
- H. Bridge
- B. Woodland
- J. Fogarty
- Herb. Bridge (1/2 days)
- Geo Bridge
- Vic Bridge (for d. in Pt.)
- J. Broadbent
- Geo Howell
- Geo Bridge (1/2 days)
- R. Carroll

19 Ash WEDNESDAY [51-314]

Old Madeira 859 Buckets
Shiraz 156 "

1015

- Geo Elliott
- Geo Phillips
- J. Mitchell
- H. Bridge
- B. Woodland
- J. Fogarty
- Herb. Bridge
- Geo Bridge
- Vic Bridge
- J. Broadbent
- G. Howell
- R. Carroll

21 THURSDAY [52-313]

- Geo Elliott-
- Geo Phillips
- J. Mitchell
- H. Bridge
- B. Woodland
- J. Fogarty 1/2 days -
- Herb. Bridge
- Geo Bridge
- Vic Bridge (for d. in Pt.)
- J. Broadbent
- G. Howell
- Geo Bridge
- R. Carroll

Duty stamps 2/-

- Geo Elliott
- Geo Phillips
- J. Mitchell
- H. Bridge
- B. Woodland
- J. Fogarty
- Herb. Bridge 1/2 day
- Geo Bridge
- Vic Bridge (for d. in Pt.)
- J. Broadbent 1/2 day
- G. Howell
- Geo Bridge
- R. Carroll today.

22 FRIDAY [53-312]

23 SATURDAY [54-311]

- Geo Elliott-
- Geo Phillips
- J. Mitchell
- H. Bridge
- B. Woodland
- J. Fogarty
- Herb. Bridge
- Geo Bridge
- Vic Bridge
- J. Broadbent
- G. Howell
- R. Carroll

Geo. Bridge
Chg. Yr. dues \$14-16.3.

24 SUNDAY - 1 in Lent [55-310] St. Matthias, Ap. Ember Week

25 MONDAY [56-309] 6h 38m P.M. (Greenwich)

- Geo Elliott
- Geo Philipp
- J. Mitchell
- H. Budge
- B. Woodland
- J. Fogarty
- Herb. Budge
- W. Budge (to Br)
- W. Budge
- H. Broadbent
- G. Howell
- Geo Budge
- R. Carroll?

441 Shiraz
 J. Lench Co.
 493 Gals Term - 1 - £ 39.13

Rents & Refund Sand Tax - £ 83.5.7

J. C. Dwyer. 1 camp 1/6

- Geo Elliott
- Geo Philipp
- J. Mitchell
- H. Budge
- B. Woodland
- J. Fogarty
- Herb. Budge
- W. Budge (to Br)
- W. Budge
- H. Broadbent
- G. Howell
- Geo Budge (to Dalwood)
- R. Carroll.

26 TUESDAY [57-308]

1439 Shiraz
 finished old vineyard -

Height O.S. - 35 L Casks. 1-2-4
 9 Shds 139
 £ 1.16.1

Ch. G. Budge 1/6 for camp

Dalwood. 1 camp 1/6

27 WEDNESDAY [58-307] Ember Day

- Geo Elliott
- Geo Philipp
- J. Mitchell
- H. Budge
- B. Woodland
- J. Fogarty
- Herb. Budge
- W. Budge
- H. Broadbent
- G. Howell
- Geo Budge (to Dalwood)
- R. Carroll.

5249 young Hermitage.

Res. Dept. Agriculture
 for vine cuttings 1900 - £ 1.13.9

J. Lowcock 1 cut-gr
 9.6.2 Term. 4/ 46.12.6
 26 - White 4/ 10.17.
 57.9.6

H. King - Grapes £ 21.0.9

Stamps 2/6

28 THURSDAY [59-306]

finished butlage
 J. Hermitage 338
 Carbimet 331

John Forbes' interest due for 1/2 year £ 3 - (1/200 @ 6%)

Picking 13,418 Buckets - £ 27.19.1

Joe Budge 2259 Bkts £ 4.14.1 1/2
 for ayd - 407 " 16 11 1/2
 Violet Budge 1586 " 3. 5. 3
 for ayd - 213 8. 10 1/2
 9. 2 1/2

- Geo Elliott
- Geo Philipp
- J. Mitchell
- H. Budge
- B. Woodland
- J. Fogarty
- Herb. Budge
- W. Budge (to W. Budge)
- W. Budge
- H. Broadbent
- G. Howell
- R. Carroll
- Geo Budge

1 MARCH FRIDAY [60-305] St. David. Ember Day

J. Dullin - Grapes £ 57.11.5
 W. Leaser Grapes £ 86.9.9

W. Budge Chq. £ 3.

- Geo Elliott
- Geo Philipp
- J. Mitchell
- H. Budge
- B. Woodland
- J. Fogarty
- Herb. Budge
- W. Budge
- H. Broadbent
- G. Howell
- R. Carroll.

2 SATURDAY [61-304] Ember Day

2. F. Gublin
 9 Cedar Casks £ 19.0.2

J. Woodland Grapes £ 40

3 SUNDAY - 2 in Lent [62-303]

~~J. Gublin~~
~~9 Cedar Casks £ 50~~

- Geo Elliott
- Geo Philipp
- J. Mitchell
- H. Budge
- B. Woodland
- J. Fogarty
- Herb. Budge
- W. Budge
- H. Broadbent
- G. Howell

4 MONDAY [63-302]

House Insurance £ 4.12.6 pa.

Geo Elliott -
J. Mitchell } Cellar.
Herb. Bridge }
W. Bridge } day ploughing

R Carroll sent -
Grapes £ 42 = 4-6

Stamps 2/6

5 TUESDAY [64-301] 8h 4m A.M. (Greenwich)

Geo Elliott (cellar)
J. Mitchell " "
Herb. Bridge " "
Vic Bridge (h B's)
W. Bridge (pl.)
Geo Bridge (h B's)
Ted Bridge (day cellar)

J. C. Inayne 2 stamps - 3/-

6 WEDNESDAY [65-300]

Geo Elliott
J. Mitchell } Cellar
Herb. Bridge }
Ted Bridge }
Geo Bridge } h B's
Vic Bridge } pl.
W. Bridge } pl.

C. F. Lindeman
913 Bals. down 1/2 = 53.5.2
367 " ditto same 1/2 = 33.1.6
86.6.8
Fruit 35 qrs. 9 shes. 1.16.1
£ 88.2.9

Postal note 5/- 2/- postage.

31 Days

7 THURSDAY [66-299]

Geo Elliott }
J. Mitchell } Cellar.
Herb. Bridge }
Ted Bridge }
Joe Bridge }
W. Bridge } pl.

Spel sent - 21 shes 15 qrs
Last week

8 FRIDAY [67-298]

Geo Elliott }
J. Mitchell } Cellar.
Herb. Bridge }
W. Bridge } pl.

J. Y. Tulloch
1 doz Bumps
1 " Shives 6/-

Postal notes 14/- postage 4/-

9 SATURDAY [68-297]

Geo Elliott }
J. Mitchell } Cellar -
Herb. Bridge }

10 SUNDAY - 3 in Lent [69-296]

Geo Elliott

Geo Elliott

Geo Elliott

11 MONDAY [70-295]

Geo Elliott (cellar)
 Herb. Bridge (pl.)
 Tea Bridge today (chip) of vines

J. Hipwell
 Grapes £3-0-10

Stamps 2/-

12 TUESDAY [71-294]

Geo Elliott (cellar)
 H. Bridge (pl.)
 Tea Bridge today (chip) of vines

13 WEDNESDAY [72-293] (Ch 6m P.M. (Greenwich))

Geo. Elliott (cellar)
 H. Bridge (pl old vines)

Pd. James Gillard
 Grapes ~~£145~~ £139.

J. Gillard paid £6. interest - due June 8th
 " " £40. Off mortgage

Tea Bridge Cash. 10/-

14 THURSDAY [73-292]

Geo Elliott (cellar)
 Herb. Bridge pl old vines)
 Tea Bridge chip of vines)

15 FRIDAY [74-291]

Herb. Bridge (cellar) -

16 SATURDAY [75-290]

No work.

Tea Bridge up sale 7/3

17 SUNDAY - 4 in Lent [76-289] St. Patrick

18 MONDAY [77-288]

no work

Geo Elliott
 23 day vintage of - 11.10
 10 " " of 3
14 10

21 THURSDAY [80-285]

no work (Raining)

19 TUESDAY [78-287]

Herb. Bridge

22 FRIDAY [81-284]

H. Bridge 1/2 day (Clear)

20 WEDNESDAY [79-286] • 0h 53m p.m. (Greenwich)

H. Bridge

23 SATURDAY [82-283]

no work

Recd of Off Lundenian
 Cheque 227.7.7
 Paper - 5.14
232.9.0

24 SUNDAY - 5 in Lent [83-282]

25 MONDAY [84-281] Annunciation. Lady Day. Quarter Day

Herb. Bridge old vines
Sea " yf. vines

26 TUESDAY [85-280]

Herb. Bridge old vines
Sea Bridge yf. vines
Vic " " "

27 WEDNESDAY [86-279] Cambridge Lent Term ends.
4h 39m A.M. (Greenwich)

Herb. Bridge old vines
Sea Bridge " "
Vic Bridge " "
F. Broadbent 3 day yf vines

~~Sea Bridge~~
~~1 Ticket 1/6~~
F. Broadbent
1 Ticket 1/6

28 THURSDAY [87-278]

Herb. Bridge (pl. old vines)
Vic " (ploughing for yf vines)
Sea " (chip yf vines)
F. Broadbent " " "

29 FRIDAY [88-277]

No work.

Pd) F. Broadbent 8/6
Ticket 1/6

Pd) Sea Bridge 11/-

Sea Bridge B. Cricket Club. towards match

Cricket match with Rota Ceclas men -

30 SATURDAY [89-276] Fox Hunting ends. Oxford Lent Term ends

H. Bridge (old vines)
Vic " 3/4 day (yf vines)

~~Take account out of cupboard~~

31 Palm SUNDAY [90-275]

8 Easter MONDAY [98-267] Bank Holiday. Quarter Sessions Week

5235
52
20.
2
3

11

9 Easter TUESDAY [99-266] Fire Insurances expire

Jac Mathews Building
Herb Bridge
Jed Bridge Gold vines
4 Broadbent
Geo Bridge cutting timber for cut

S. Corner
1 Spanner of -

10 WEDNESDAY [100-265] Oxford Easter Term begins

Jac Mathews building
Herb Bridge
Jed Bridge Gold vines
Frank Broadbent
Geo Bridge building

11 THURSDAY [101-264]

Jac Mathews building
Herb Bridge
Jed Bridge Gold vines
4 Broadbent
Geo Bridge Building

12 FRIDAY [102-263] c 3h-57m A.M. (Greenwich)

Jac Mathews building
Herb Bridge
Jed Bridge Gold vines
4 Broadbent
Geo Bridge building pd Jed Bridge #1
pd 4 Broadbent #1.7.6.

13 SATURDAY [103-262]

H. Bridge old ones } 1/2 day
Jac Mathews building

14 Low SUNDAY—1 after Easter [104-261]

15 MONDAY [105-260]

Geo Bridge } drawing staks from Elliott
 Geo Bridge } building
 J. Mathews } building
 Geo Hutcheon " 1/2 day
 Led Bridge " 1/2 day 1/2 old vines
 F. Broadbent 1/2 day old vines
 H. Bridge 1/2 day old vines 1/2 day Cellar

1.88

16 TUESDAY [106-259] Easter Law Sittings begin

Geo Bridge 1/2 day unloading timber
 Led Bridge building
 Herb Bridge young vines
 F. Broadbent old vines
 J. Mathews building
 Geo Hutcheon building
 F. Broadbent £1.10

17 WEDNESDAY [107-258]

H. Bridge young vines
 Led " 1/2 day " 1/2 building
 F. Broadbent 1/2 day old vines W. Hollingshead pd £7.5
 J. Mathews building H. Bridge £1.12
 Geo Hutcheon "
 J. Mitchell Cellar

4 ditches
 1/2 row / per wk for base

18 THURSDAY [108-257] Cambridge Easter Term begins.
● 9h 37m P.M. (Greenwich)

W. Hollingshead sen. Interest due £100 @ 6% = £6
 Geo Hollingshead sen. Interest due £50 @ 6% = £3

Led Bridge old vines
 J. Mitchell Cellar (How day)

19 FRIDAY [109-256]

Led Bridge 1/2 day unloading timber
 Herb Bridge 3/4 young vines
 J. Mathews 1/2 day building
 J. Mitchell Cellar

Dr. H. J. Lindeman
 Freight old wine cooler 4.6.6
 Wharfage 2.3
 Cartage 2.6
£ 4. 11 3

20 SATURDAY [110-255] Mohammedan Year 1319 begins

Led Bridge } building
 J. Mathews } building
 J. Mitchell Cellar

21 SUNDAY—2 after Easter [111-254]

69
 828
 12 15 9
 8 5 1 7
 9 7 2
 13 14 10
 9 11 2

22 MONDAY [112-253]

Halter Joass interest due. £50 @ 6% = £3 pt -

Geo Bridge
J Mathews
Geo Hutchinson
J Mitchell
building
cellar

23 TUESDAY [113-252] St. George

J Mathews ~~day~~ building
Geo Hutchinson "
J Broadbent old vines
Geo Bridge cleaning out well
J Mitchell cellar
Geo Bridge
Geo Bridge drawing timber for foot yard

24 WEDNESDAY [114-251]

J Mathews 1/2 day building
Geo Hutchinson 1/2 do
Geo Bridge cleaning out well etc
J Broadbent 1/2 day old vines
J Mitchell cellar

J Mathews £ 3.7.6 up to date

25 THURSDAY [115-250] St. Mark, Evan. 3 4h 15m P.M. (Greenwich)

Geo Bridge young vines plough
Geo Bridge "
J Broadbent old vines
J Mitchell cellar

26 FRIDAY [116-249]

Geo Bridge young vines plough
Geo Bridge 1/2 day "
J Broadbent young vines (started)

17/4
£39.00
21/4
£1.10

27 SATURDAY [117-248]

Geo Bridge
Geo Bridge young vines
J Broadbent
J Mitchell cellar

J Mitchell £4.12
Alf Loag
on the fence £2-

28 SUNDAY—3 after Easter [118-247]

3/2
5/3

29 MONDAY [119-246]

Geo Bridge }
 Sea Bridge }
 7 Broadbent }
 1 Mitchell - Cellar }
 Young birds 'ploughing' }
 hop 3/4 }
 Geo Hutchinson £1-0-0

30 TUESDAY [120-245]

1 Mitchell Cellar

1 MAY WEDNESDAY [121-244] SS. Philip and James.
Holiday, Stock Exchange

1 Mitchell Cellar
 Sea Bridge }
 7 Broadbent } cutting down bushes in Lucan park

31 Days

2 THURSDAY [122-243]

1 Mitchell Cellar

7 Broadbent 8/-

3 FRIDAY [123-242] 6h 19m P.M. (Greenwich)

Via Bridge }
 Sea Bridge } trip to Braintree (10/-)

Walter Jones interest £3-0-0

Freight etc Otd -
 35-gps = 1.2.4
 28 " = 17.1
£1.19.5

Lynch returned w/ 4 has. 5-gps

4 SATURDAY [124-241]

no work -

Sea Bridge
Cash £1.

5 SUNDAY—4 after Easter [125-240]

6 MONDAY [126-239] Bank Holiday, Scotland. Royal Academy opens

J. Mitchell cellar
F. Broadbent (off vines) 1/2 day

J. Keyland
Cutting Sucker - 18 days 4/- 3.14.0

7 TUESDAY [127-238]

J. Mitchell (cellar)
Geo Bridge (h. Bs)
Vic Bridge (h. Bs)
Frank Broadbent (off vines)

C. F. Ludeman
15 1/4 Gals. Linn - 26-27 c/2 92 22
Freight 2 1.19.5
94 1 7

Stamps 7/6

J. C. Inayre 2 stamps 1/6 = 3/-

8 WEDNESDAY [128-287]

J. Mitchell (cellar)
Geo Bridge (h. Bs)
Vic Bridge
Geo Bridge working
Frank Broadbent (off vines)

S. Corner
Freight 1/-

Postal note 7/6

9 THURSDAY [129-236] Half Quarter Day

J. Mitchell (cellar)
Geo Bridge (off vines)
F. Broadbent (")

Behead

10 FRIDAY [130-235]

J. Mitchell (cellar)
Geo Bridge (off vines)
F. Broadbent (")

11 SATURDAY [131-234] c 2h 38m P.M. (Greenwich)

J. Mitchell (cellar)
Geo Bridge (h. London's) 5/-
Geo Bridge
F. Broadbent - (garden)

Geo. Bridge 5.3 5

12 Rogation SUNDAY [132-233]

13 MONDAY [133-232] Rogation Day

J. Mitchell (cellar),
Geo Bridge (to Br.),
Vic Bridge (" ")
Frank Broadbent (working)
Ted Bridge (off vines)

Vic Bridge
separate a/c

N Bridge
Inventory Concertina 3/-

Ted Bridge
update £250

J.C. Inayme 2 camps.

14 TUESDAY [134-231] Rogation Day

J. Mitchell (cellar),
Geo Bridge (p. Br.),
Vic Bridge (" ")
Ted Bridge (pl. off vines)
F. Broadbent (" " ")

234 has
998
Lynch & Co
967 10 Gals white wine 1/- £35.10
Red " " 1/- £48.4
83.14

Ted Bridge -
1 Stockwhip 6/-

Postal note 2/6
Stamps 2/6

15 WEDNESDAY [135-230] Whitsunday. Scottish Quarter Day.
Rogation Day

J. Mitchell (waffonshed)
F. Broadbent (ply vines)

Wolfe & Co
28 sheets 8 ft. Iron - £3.14.
Freight 1/9

Geo Bridge Call £2.

16 THURSDAY [136-229] Ascension Day

J. Mitchell (building waffonshed)
F. Broadbent pl. off vines

4.19.8
4.19.8

3.4
8
7.6.8
1.8
1.8.4

17 FRIDAY [137-228]

J. Mitchell waffonshed
Ted Bridge (ply vines)
F. Broadbent (" " ")

Geo Bridge
off vines 14.16.3
Trays 11.4.6
£26.09

18 SATURDAY [138-227] • 5h 38m A.M. (Greenwich)

F. Broadbent (ply vines)
J. Mitchell waffonshed
Ted Bridge (pl. off vines)

pl. F. Broadbent
update 15/6

Stamps 2/-

19 SUNDAY after Ascension [139-226]

~~4.10
3.14.6
15.6~~
3.4
22
2.0.19
1.8
2.1.8

4.4.2
4.19.8
4.4.2
15.6

20 MONDAY [140-225]

J. Mitchell (waggon shed)
Ted Budge (off vines)
F. Broadbent (" ")

21 TUESDAY [141-224]

J. Mitchell (waggon shed)
Ted Budge (orchard)
F. Broadbent (orchard)

22 WEDNESDAY [142-223]

J. Mitchell (waggon shed)
Ted Budge (off vines)
F. Broadbent (" ")

Postal notes & postage 4/- = 17/10

23 THURSDAY [143-222]

J. Mitchell (waggon shed)
Ted Budge (off vines)
F. Broadbent (" ")

24 FRIDAY [144-221] Queen Victoria born, 1819. Easter Law Sitings end.
Oxford Easter Term ends

J. Mitchell (waggon shed)
Ted Budge (off vines)
F. Broadbent (" ")

Stamps 4/-

25 SATURDAY [145-220] Oxford Trinity Term begins.
5h 40m A.M. (Greenwich)

James Lambkin - Interest due £12.16.0 @ 7% - ~~8~~ 8%

Public School Picnic & Concert

26 Whit SUNDAY [146-219] Ember Week

27 Whitsun MONDAY [147-218] Bank Holiday

J. Mitchell (cellar)
Ted Bridge (pl yones) 1/2 day
F. Broadbent working 1/2 day.

J. P. Bridge
Cash £1-

Registering parcel 7² stamps 5² = 1/-

28 Whitsun TUESDAY [148-217]

J Mitchell cellar -

Alf Lodge
Chq. 2.13 0

29 WEDNESDAY [149-216] Ember Day

J. Mitchell }
Ted Bridge } sawing wood.
F. Broadbent } carting

30 THURSDAY [150-215]

J Mitchell 1/2 day }
Ted Bridge } sawing wood
F Broadbent }

4. 19-8
1 11 8
6. 11 4

Stamps 1/9
Letter Cards 2/6

31 FRIDAY [151-214] Ember Day

~~J Mitchell~~
Ted Bridge } wood
F Broadbent }

1 JUNE SATURDAY [152-213] Ember Day

~~J Mitchell~~
F. Broadbent (wood.)

J. Broadbent
up to date £1-11-8

d. J. Med. £1 for F. Broadbent

2 Trinity SUNDAY [153-212] 9h 53m A.M. (Greenwich)

8 1/2
6
489 1/1000

5. 4
8 1/2
1. 6. 8
1. 9
19. 4

3 MONDAY [154-211]

Duke of Cornwall & York's Birthday

Yed Bridge 11 1/2 days 4/- 2. 6. 0
Less Stockwhip 6. 0
3 hrs done - 3 - 9 -
hp to date f 1. 17 -

6 THURSDAY [157-208] Corpus Christi

Yed Bridge (husking corn)
F. Broadbent " "

4 TUESDAY [155-210] Trinity Law Sittings begin

F. Broadbent

7 FRIDAY [158-207]

Yed Bridge (yf vines)
F. Broadbent

5 WEDNESDAY [156-209]

F. Broadbent
Yed Bridge 5 days

8 SATURDAY [159-206]

James & Gilard's interest for 3 years - £6 pd.
Yed Bridge { yf vines -
F. Broadbent }

9 SUNDAY—1 after Trinity [160-205] 10h 0m p.m. (Greenwich)

10 MONDAY [161-204]

J. Mitchell cellar (2 day)
Ted Braze pl yf vms (2 day)
F. Broadbent " " (1/2 ")

Ted Braze
Cash £1-

11 TUESDAY [162-203] St. Barnabas, Ap.

J. Mitchell (cellar)
F. Broadbent worked -

12 WEDNESDAY [163-202]

J. Mitchell cellar
F. Broadbent (yf vms)
Ted Braze (" ")

J. Mitchell
Chq. 1.1.0

13 THURSDAY [164-201]

J. Mitchell (cellar)
Ted Braze (yf vms)
F. Broadbent (" ")

Geo Hollinshead sen
Pa £3 interest.

14 FRIDAY [165-200]

J. Mitchell (cellar)
Ted Braze (pl yf vms)
F. Broadbent (" " ")

15 SATURDAY [166-199]

J. Mitchell (cellar)
Ted Braze (yf vms 2 day)
F. Broadbent (" " ")

F. Broadbent
Cash 10/-

16 SUNDAY—2 after Trinity [167-198] • 1h 33m P.M. (Greenwich)

17 MONDAY [168-197]

J. Mitchell (cellar)
Sea Bridge y vines (3 day)
F. Broadbent y vines - all day -

20 THURSDAY [171-194] Queen's Accession, 1837

J. Mitchell cellar -
Sea Bridge
F. Broadbent - y vines
F. Svingerford y vines

Recd fr. C. F. Lindeman
Cheque 92.2.2 ~~freight 1.19.5~~
Freight 1 19 5
94.1.7
Less 4 8 + Gab. allage -
93.16.11
less exp. 23 13 = 0
(Sent to W. M. Bank)

22/23/24/25/26/27/28/29/30

18 TUESDAY [169-196]

J. Mitchell (cellar)
Sea Bridge y vines
F. Broadbent " ")

21 FRIDAY [172-193] Proclamation, Queen Victoria

J. Mitchell (cellar)
Sea Bridge
F. Broadbent } 3/4 day - y vines
F. Svingerford }

Stamps 2/-

19 WEDNESDAY [170-195]

J. Mitchell (cellar)
Sea Bridge (y vines)
F. Broadbent (y vines)
Frank Svingerford 1/2 day y vines

22 SATURDAY [173-192]

J. Mitchell
Sea Bridge 1/2 day y vines
F. Broadbent all day
F. Svingerford.

F. Broadbent
Up to date of 1-17 6

Sea Bridge Cash 10/-

23 SUNDAY—3 after Trinity [174-191] 8h 59m P.M. (Greenwich)

24 MONDAY [175-190] St. John Baptist. Midsummer Day. Quarter Day.
Cambridge Easter Term ends

J. Mitchell cellar -
Lea Bridge (off vines)
F. Broadbent " ")

25 TUESDAY [176-189]

J. Mitchell (cellar),
Lea Bridge (off vines)
F. Broadbent (" ")

Stamps 2/-

26 WEDNESDAY [177-188]

J. Mitchell (cellar),
Lea Bridge (off vines)
F. Broadbent (" ")

Concert presentation to Fred Lyrell -

27 THURSDAY [178-187]

J. Mitchell (cellar -)
F. Broadbent - (off vines)
~~Lea Bridge (off vines)~~ " ")

J. Mitchell
Chq. £1-10-0

28 FRIDAY [179-186] Coronation, Queen Victoria, 1838

J. Mitchell (cellar),
F. Broadbent working -

Professor Plunne arrived -

29 SATURDAY [180-185] St. Peter, Ap.

F. Broadbent (day off vines),
J. Mitchell (cellar all day)

Lea Bridge
Cash 5/-

Geo. Braze
Subscribing £9.

30 SUNDAY - 4 after Trinity [181-184]

1 MONDAY [182-183] Quarter Sessions Week. O 11h 18m P.M. (Greenwich)

J. Mitchell cellar
F. Broadbent young vines
Geo Elliott young
H. Bridge pruning

~~Geo Bridge~~
Subscribing £9-

390.112
10 176
464.8

4 THURSDAY [185-180] Declaration of American Independence

Joe Bridge
Geo Bridge
J. Mitchell
F. Broadbent
Fred Hungerford
J. Kime
Herbert Morrison
Geo Elliott
F. Kime
F. Zartmann
Stamps 5/-

planting of vines

pruning old vines

Joe Bridge
Up to date

Freight on
3- coils wire 1-11.
1 Roll " 8.7
20 coils " 8.7

S Corner. 1 case raphtha (to be returned)

2 TUESDAY [183-182]

J. Mitchell cellar
Geo Bridge
Vic Bridge
Geo Elliott
F. Broadbent
H. Bridge

J. Lynch & Co.
(13 Ashes 4 2/5 + 109 5/8 + 919 Galv. Iron 1-45.19
3 Ashes) 176. White 1-8.16
54.85

Lent Dr. Elliott £80. for 3 years @ 6%.

5 FRIDAY [186-179] Dividends due at Bank

Geo Bridge
Joe Bridge
J. Mitchell
F. Broadbent
Fred Hungerford
J. Kime
Herbert Morrison
Vic Bridge cutting cuttings
Geo Elliott
F. Kime
F. Zartmann

Herb. Bridge
Freight + 2 Cwt. to 10 wire - 1.9
1 pt. pruning saws 3.6
1 Pruning saw 2.8
1.15

Wolfe & Co
18 cwt + 10 Galv. wire 14 - £12.12.0

3 WEDNESDAY [184-181]

J. Mitchell cellar
Geo Bridge
Vic Bridge
Geo Elliott
Herb. Bridge
F. Kime
F. Zartmann
F. Broadbent

J. Mitchell Cash of
£7 L. Freight a/c.
24 21 Casks } 1.2.4
3 Ashes }
33 Is } 1.2.4
50 " } 1.16.7
4.1.3

Professor left -

6 SATURDAY [187-178] Oxford Trinity Term ends

Geo Bridge
Joe Bridge
Vic Bridge
F. Broadbent
Fred Hungerford
J. Kime
Herbert Morrison
Geo Elliott
F. Kime
F. Zartmann
J. Mitchell (cellar)

F. Broadbent
Chq. 1-19-8-
Jacks horse 4-

SUNDAY - 5 after Trinity [188-177]

Cellar a/c
1 Slipstone = 10
Images " 1.3
2 Saws 5
1/2 doz P. Shears 1.
3 Saw files 1.0
3 Springs 1

3.4
11
1.16.8

3.8
2.4
1.16.8

11 1/2 1-

8 MONDAY [189-176]

Camp Paddock etc
 3 cent 208. Wrie 1/6 1. 14. 6
 2 " Barked " 14/6 1 15 -
 2 Hanks Binding " 1/- 2
 Freight 1. 11.
 Geo Elliott Fencing 10 - -
£ 13. 13. 5
 2 qrs Barked wrie 1/6 8 9
 1 q. Galv. " 200 1/- 3 6
£ 14 5 8

Geo Elliott }
 F. Kime }
 F. Zartmann } Pruning
 F. Mitchell }
 F. Broadbent }
 Geo Bridge } Wrie

2 Gall
 Loan 10

9 TUESDAY [190-175] Fire Insurances expire. C 3h 20m A.M. (Greenwich)

Geo Elliott
 F. Kime }
 F. Zartmann } Pruning
 F. Mitchell } cellar today - yf wrie today)
 Geo Bridge } h P.
 Vic Bridge }
 F. Broadbent } yf wrie -
 Joe Bridge } yf wrie -

~~C. F. Lindeman
 562 baskets
 1452 Gals. Term 1/2 = £102. 14. 0
 Freight 50 lbs 1. 16. 4
£ 104. 0 7
 Pa. Y. Mitchell up to date £ 6. 3. 0
 also money due 4 4 10
10. 7. 10~~

10 WEDNESDAY [191-174]

Geo Elliott }
 F. Kime } Pruning
 F. Zartmann }
 F. Mitchell }
 Joe Bridge } yf wrie
 F. Broadbent }
 Geo Bridge }
 Vic Bridge } J. Branston.

~~Corrected Invoice
 C. F. Lindeman
 562 baskets -
 1723 Gals. Term 1/2 = £100. 10. 2
 50 qrs. Freight 1 16 7
£ 102. 6 9~~

S. Corner
 Freight case of boxes 3/-

11 THURSDAY [192-173]

Geo Elliott
 F. Kime }
 F. Zartmann } Pruning
 F. Morrison } 4/2
 F. Broadbent } yf wrie
 Joe Bridge } 5 day "

~~Freight 20 Cils. 200. 0. 0~~
 on Case Sample bottles

12 FRIDAY [193-172]

Geo Elliott
 Kime }
 Zartmann } Pruning
 Morrison }
 Sparks } 4/-
 Broadbent } yf wrie
 Bridge } yf wrie -

13 SATURDAY [194-171]

F. Kime
 F. Zartmann } Pruning
 F. Morrison }
 D. Sparks }
 F. Broadbent } Chip yf wrie
 Vic Bridge } yf wrie

J. Langford
 Clearing Gully £5-

14 SUNDAY - 6 after Trinity [195-170]

15 MONDAY [196-169] • 10h 11m P.M. (Greenwich)

Geo Elliott
 F. Kime
 F. Zartmann } pruning
 A. Morrison
 J. Sparke
 R. Carroll } 4/6
 F. Broadbent } chip y vines
 Vic Bridge
 J. Mitchell (cellar)

Rachel Hill (mail)

16 TUESDAY [197-168]

Geo Elliott
 F. Kime
 F. Zartmann } pruning
 J. Sparke
 A. Morrison
 R. Carroll
 F. Broadbent } y vines
 Vic Bridge
 J. Mitchell (cellar)

A. Morrison
 8 days @ 4/- = £1-12-0

17 WEDNESDAY [198-167]

Geo. Elliott
 F. Kime
 F. Zartmann } pruning
 J. Sparke
 R. Carroll
 F. Broadbent } pl for y vines
 J. Mitchell (cellar)
 Geo. Bridge (Ch. Br.)
 Vic Bridge (in)

Vic Bridge
 Cash 5/-

18 THURSDAY [199-166]

F. Kime
 F. Zartmann } pruning
 R. Carroll } 2 day old vines
 J. Sparke } 1/2 " y vines (Geo Bridge's)
 F. Broadbent pl. for y vines
 J. Mitchell (cellar)
 Geo Bridge }
 Vic Bridge } sp. Br. -
 Stamps 3/6

C. F. Ludeman
 36 gns - 1445 Gals Arm 1/2. £101.15.10
 Freight - 53 gns
 24 " }
 3 Hds }
 1 2. 4
 1 2. 4
 104. 0 4
 Less - Freight etc. Home Cooler
 (See Aug 1901)
 4 11. 3
 £99. 9. 3

19 FRIDAY [200-165]

Geo Elliott
 F. Kime
 F. Zartmann } pr vines for
 R. Carroll } Geo. Bridge
 J. Sparke
 J. Mitchell (cellar)
 Vic Bridge (pl for com)
 F. Broadbent - pl for y vines

Red wine 28 tons
 White 67000

Samples sent to C. F. L.
 Red - 1000 Gals - 17, 19, 21, 22, 25, 30, 33, 34, 37, 40, 41, 43, 45, 48, 51.
 500 Gals - 12, 3, 5, 6, 7, 8, 9, 10, 15, 16, 18, 20, 26, 27, 28, 31, 32, 36, 42, 46, 49, 52 (all)
 900 Gals. 38, 44. 300 Gals. 23.
 White 300 Gals. 3, 4, 5, 6, 7, 8, 9, 12, 13, 14, 15, 16, 18, 19, 20, 23, 24, 25, 26.
 500 Gals. 10, 11

20 SATURDAY [201-164]

Geo. Elliott
 F. Kime (3 day)
 F. Zartmann } pr y vines
 R. Carroll }
 J. Sparke
 J. Mitchell 2 day (Freight etc. 30 gns. 1/2/4)
 F. Broadbent
 Vic Bridge

Plow 4/2/6 -
 C. F. Ludeman
 30 gns. 1/2/4
 Dr. Bridge
 Freight on Plow 3/-
 B. Corner
 Freight on box of 5/9
 Samples to Sydney

21 SUNDAY - after Trinity [202-163]

F. Kime 153 chgs 5/- = £3.17.6
 F. Broadbent - 12 @ 3/4 = £2 2
 Less horse 2 whs
 1. 18. 0

5 MONDAY [217-148] Bank Holiday. Royal Academy closes

J. Mitchell (cellar)
 Geo Elliott (pruning of vines)
 F. Broadbent
 Ch. Fleming (old vines)
 A. White (")
 C. H. Dipwell (")
 Vic Bridge of vines

2 Postal notes 3/- = 6/- postage 2^d 6/2.

6 TUESDAY [218-147]

J. Mitchell
 F. Broadbent
 A. White
 C. H. Dipwell } Old vines
 Ch. Fleming
 Geo Elliott (Pruning)
 Geo Bridge of H.B.
 Vic Bridge of H.B.

C. F. Lindeman
 1357 Gals Germ-1/2 = £49.3.2
 Height 30 yrs. 1 2 4
 £ 80.5.6

7 WEDNESDAY [219-146] c 8h 2m A.M. (Greenwich)

J. Mitchell
 F. Broadbent
 A. White
 C. H. Dipwell } Old vines today
 Ch. Fleming
 Geo Elliott pr vines
 Geo Bridge of H.B.
 Vic Bridge of H.B.

Dept: Agriculture
 Culling

300 Riesling	5.0
300 Pinot	5.0
300 Madeira	5.0
300 Hermitage	5.0
300 Cabernet	5.0
300 White Hermitage	5.0
300 Red Muscat Hamburgs	-
Carting	10
	<u>£2.5.0</u>

Geo School
 23^d 5/2 = 5.17-

11 SUNDAY—10 after Trinity [223-142] Half Quarter Day

8 THURSDAY [220-145]

J. Mitchell
 F. Broadbent
 A. White
 H. White
 Ch. Fleming
 J. Dipwell
 C. Dipwell
 Vic Bridge

(Put 8 Bullocks in the flat @ 1/- per week each for one year)

Mr James Ryan
 Liverpool
 For Mr J. Ammelbach
 Culling

2000 White Pinot
 2000 Riesling
 3000 Madeira
 2000 Cabernet
 9000 @ 10/- = £110.0

Height
 3 Casks Iron 13/11
 Gummy Bag 1/-
 16 Dr lasks. 30 Hds 4/2
 14 " " "

9 FRIDAY [221-144]

J. Mitchell
 F. Broadbent
 A. White
 H. White
 C. Fleming
 J. Dipwell
 C. Dipwell
 Vic Bridge
 Geo Bridge
 Joe Bridge

Hold vines -

15th 22nd 29th 5th 12th 19th 26th

20/11/6
 20.16

10 SATURDAY [222-143]

J. Mitchell (old vines)
 F. Broadbent (pr vines)
 A. White (")
 Geo Bridge (")
 Vic Bridge (")
 A. White (old vines)
 C. Fleming (")
 J. Dipwell (")
 C. Dipwell (")

Geo Bridge
 up to date £ 7.13.9 Chq
 Cash - 1/10

12 MONDAY [224-141] Grouse Shooting begins. Trinity Law Sittings end

J. Mitchell
 F. Broadbent
 Vic Bridge } yf vines
 S. Dipwell } yf vines
 C. Dipwell } yf vines
 N. White } yf vines -
 G. White }
 C. Fleming }

15 THURSDAY [227-138]

J. Mitchell
 N. White } yf vines
 S. Dipwell } yf vines
 C. Dipwell }
 N. White }
 C. Fleming } old vines
 F. Broadbent }
 Joe Bridge }
 Vic Bridge (Jr. Br.)

Guiner & Co.
 501 Gals Germ. = £25.1.0
 1 Dr. Cash 7.6
 Less 1 1/2% dis. 24.13.6
 J. Y. Tulloch po 24.76
 16 lbs Rope

13 TUESDAY [225-140]

J. Mitchell 2 day yf vines 2 day cellar
 Vic Bridge yf vines
 N. White " "
 S. Dipwell " " 2 day
 C. Dipwell old vines
 C. Fleming " "
 N. White " "
 F. Broadbent " "

Stamps 2/6

16 FRIDAY [228-137]

E. Spruell P. K. £9- due.
 J. Mitchell old vines
 Vic Bridge 2 day old vines 2 day yf vines
 C. Fleming 2 "
 N. White }
 S. Dipwell } yf vines
 C. Dipwell }
 F. Broadbent }
 Joe Bridge }

14 WEDNESDAY [226-139] ● 8h 28m A.M. (Greenwich)

J. Mitchell } yf vines
 N. White } yf vines
 A. White }
 S. Dipwell }
 C. Dipwell } old vines -
 C. Fleming }
 F. Broadbent }
 Vic Bridge (Jr. Br.)
 Joe Bridge }

F. Broadbent 5/- (for church)
 Vic Bridge Cash 2/-

17 SATURDAY [229-136]

J. Mitchell }
 N. White }
 C. Fleming } Cash 1/-
 Vic Bridge }
 N. White }
 A. White 2 day }
 S. Dipwell }
 C. Dipwell } yf vines -
 F. Broadbent }
 Joe Bridge }

po) F. Broadbent
 12 days - £ 4. 0
 Less 2% dis
 Church 5/-
 £ 1. 14 0

18 SUNDAY—11 after Trinity [230-135]

Leanne's Court

19 MONDAY [231-134]

Vic Bridge 3 day old vines
+ Broadbent
R White
R White
C. Dipwell
} 1/2 vines 3 day

J. Y. Tulloch
5 plug bungs: medium size
3 Gummy Bags
S. Corner
1 Bundle Galv Hoop Iron 9 1/2 lbs 1 20

20 TUESDAY [232-133] Black Game Shooting begins

Vic Bridge
+ Broadbent
R White
R White
J. Mitchell (cellar)
} 1/2 day young vines

46
14 20

21 WEDNESDAY [233-132]

J. Mitchell old vines
+ Broadbent
R White 1/2 day
R White 1/2
C. Dipwell 1/2
} Young vines
Vic Bridge to sp. Br. wick corks.

22 THURSDAY [234-131] 7h 52m A.M. (Greenwich)

J. Mitchell (cellar)
Vic Bridge
+ Broadbent
R White
C. Dipwell
} 1/2 vines

Vic Bridge
up to date £ 4-8

G. Croffaldi
287 Galv. Shiraz 1/2 = £ 16.14.10

~~G. Croffaldi~~
~~275 Galv. Shiraz 1/2 = £ 15.10.15~~

C. & A. Ludeman here =

G. Cominetti
307 Galv. Pers 1/2 - - £ 15.4
Less 2 1/2 %
£ 15

23 FRIDAY [235-130]

J. Mitchell 3 day cellar 3 - 1/2 vines
+ Broadbent
C. Dipwell 1/2 vines
Geo Bridge to Br.
R White 3 day 1/2 vines

R White 3/4 cart

24 SATURDAY [236-129] St. Bartholomew, Ap.

+ Broadbent
J. Mitchell
C. Dipwell
Geo Bridge to Br.
Ludeman's left

S. Corner
Freight on Raphtha 7/10

25 SUNDAY - 12 after Trinity [237-128]

26 MONDAY [238-127]

F Broadbent
Dr. White
J. Day of mine -

J. Mitchell
Cheque to date £6-7

Ch. Fleming
22 days 7/- £2.4.0

J. Drummond
One cutting £3-3-6

27 TUESDAY [239-126]

Vic Bridge
F. Broadbent
Dr. White
A. Dipwell
J. Day of mine -

28 WEDNESDAY [240-125]

John Forbes £100 + £3 interest due = £103

Vic Bridge
Dr. White
F. Broadbent
J. Day of mine

29 THURSDAY [241-124] O 8h 21m P.M. (Greenwich)

J. Mitchell
F. Broadbent
Dr. White
A. Dipwell
J. Day of mine

30 FRIDAY [242-123]

J. Mitchell
F. Broadbent
Dr. White
pl for Corn -

2.6
13 1/2
1.12.6
1 3
1.13.9

118.6
27.6

31 SATURDAY [243-122]

J. Mitchell
F. Broadbent
Dr. White
J. Day of mine
Stamps 3/-

Dr. White
19 days 7/6 £27.6

F. Broadbent
11 days 7/6 £22.2

1 SEPT SUNDAY - 13 after Trinity [244-121]

22.2
2.2
£24.4

2 MONDAY [245-120] Partridge Shooting begins

J. Mitchell
 F. Broadbent } old vines
 R. White }
 R. Craft }
 J. Hungerford } today old vines - today planting corn 4/100.

3 TUESDAY [246-119]

J. Mitchell old vines
 F. Broadbent today old vines today y vines
 R. White y vines
 R. Craft old vines
 Rec'd for Sept 10/-

4 WEDNESDAY [247-118]

J. Mitchell }
 R. Craft } old vines
 R. White } y vines
 F. Broadbent } old vines

5 THURSDAY [248-117] < 1h 27m P.M. (Greenwich)

J. Mitchell
 F. Broadbent } old vines
 R. Craft
 R. White } today y vines

Stamps 2/6

6 FRIDAY [249-116]

J. Mitchell
 F. Broadbent } y old vines
 R. Craft
 R. White } y vines

F. Broadbent	
5 days 3/8	18.4
Los base	1
	19.4
Advanced	1 - -

plunge 1.17.4
 1.17.6

7 SATURDAY [250-115]

J. Mitchell }
 R. Craft } old vines
 R. White } y vines

8 SUNDAY—14 after Trinity [251-114]

9 MONDAY [252-113]

J. Mitchell (old vines -
W. Craft -
W. White - young vines

W. White
14 days 2/- f 1.14 0

R. Graham
May f 8.14.8

W. Mitchell -

10 TUESDAY [253-112]

J. Mitchell (old vines
W. Craft -
W. White - young vines

C. Dupwell
16 days 2/- f 1.12 0

L. Dupwell
10 days 2/6 f 1.6 3

11 WEDNESDAY [254-111]

J. Mitchell (old vines -
W. Craft -

Recd of S. Corner f 17. 11.

12 THURSDAY [255-110] • 9h 19m P.M. (Greenwich)

J. Mitchell pl for corn -
W. Craft -
W. White (young vines)

We owe Barnett 1/6 for freight.

Paid W. White 3/4 too much (1 1/2 days)

13 FRIDAY [256-109]

J. Mitchell pl for corn
W. Craft -
W. White (young vines)

Recd of J. Immelhoff
for cutting f 3.10. 0

14 SATURDAY [257-108] Jewish Year 5662 begins

J. Mitchell pl for corn -
W. Craft -
W. White (young vines)

W. Craft Cheque f 2-

Stamps 5/-

15 SUNDAY—15 after Trinity [258-107] Ember Week

W. White trade

16 MONDAY [259-106]

J. Mitchell farming
D. White y vines

19 THURSDAY [262-103]

J. Mitchell (y vines)
D. White
W. Craft 2 day y vines

17 TUESDAY [260-105]

J. Mitchell farming
D. White
J. Kime y vines

see July 8
Camp Paddock
2 qrs Barbed wire 1 1/2 cent = 8.9
1 lb Galv - wire do 10 1/2 cent = 36
44.9

20 FRIDAY [263-102] Ember Day

J. Mitchell
D. White y y vines
W. Craft y y vines
J. Kime

D. White
Cash 44 -

18 WEDNESDAY [261-104] Ember Day

J. Mitchell 1/2 day y vines 2 day cellar
D. White (y vines)

21 SATURDAY [264-101] St. Matthew, Ap. Ember Day.
1h 33m A.M. (Greenwich)

J. Mitchell cellar 2 day y vines 2 day
D. White
W. Craft y y vines
J. Kime y y vines

22 SUNDAY - 16 after Trinity [265-100]

Craft moved into old hall

23 MONDAY [266-99]

J. Mitchell cellar
D. Craft }
D. White } y vines
J. Kime }

24 TUESDAY [267-98]

J. Mitchell 2 day old wine cellar }
D. Craft }
D. White } y vines
J. Kime }
D. Hollishead Jun. (to Br.)

C. F. Hindeman
244 Gals. doz white 1/2 = £16.3.2
Shiraz

25 WEDNESDAY [268-97]

J. Mitchell 2 day old vines 1/2 y vines
D. Craft y vines
J. Kime 2 day old vines 1/2 day y vines
D. Hollishead Jun. (to Br.)

Geo. Biage } 10
Vic " } 6
Joe " } 12
Locate £ 1.8.0

C.F.S. Freight 50 gns - 1-15.6

Incl ut. 11 shas - Freight 4/-
Freight on Plough 1/-

26 THURSDAY [269-96]

J. Mitchell (cellar)
D. Craft (y vines)
J. Kime " "

12
6.15.9
5.4

Bridges left -

27 FRIDAY [270-95]

J. Mitchell (cellar)
J. Kime
D. Craft
D. Hollishead to Braunston

2.8.1/2
1.9.4
1.11.10
1.11.2

Stamps 9/6

28 SATURDAY [271-94] O 5h 36m A.M. (Greenwich)

J. Mitchell
D. Craft
D. Hollishead

D. J. Hindeman
1825 Gals. Shrimps 1/2 = £106.9.2
(Casks 85 33 + 11 not packed) (Freight 50 gns) 1-15.6
Independent of this wine
£108.4.8

~~29 SUNDAY~~ 17 after Trinity [272-93] St. Michael and All Angels.
Michaelmas Day. Quarter Day

Freight 4/2
50 gns. 1-10.9

D. Craft. Cheq. £2.
Freight 5 Rolls. doz 12 Gal. wine (10) 1/4

30 MONDAY [273-92]

J Mitchell building harness room -
R Craft
R White 1/2 y vines

235) 2240/9
2115
125

9) 52.6
5.10

~~235) 2240/9~~
~~2115~~
~~125~~
235) 2240/9
2115
125

3 THURSDAY [276-89]

J Mitchell old vines 2 day - 1/2 y vines 2 day
R Craft
R White 1/2 y vines -
L Dipwell
J Smith drawing ~~timber~~ fencing
7 Broadbent 1/2 y vines

1 Bale Hay - J. Y. Tulloch
235 lbs - @ 5 2/6 pstr.

Postal note 2/6 -

1 OCT TUESDAY [274-91] Pheasant Shooting begins.
Cambridge Michaelmas Term begins

Home and Farm Subscription in advance 2/6 due pd

J Mitchell 2 day building 2 day cellar
R Craft
R White 1/2 y vines -
L Dipwell 3/4

220) 2240/10
2200
40

2 WEDNESDAY [275-90]

J Mitchell (building)
R Craft
R White 1/2 y vines
L Dipwell

125) 2240
1250
990
95
10) 52.6
5.10
17) 52.6
4.10
2.10
2.10

4 FRIDAY [277-88] c 8h 52m p.m. (Greenwich)

J Mitchell 2 day old vines 2 - 1/2 y vines - A & J Hutchison
R Craft
R White 1/2 y vines
L Dipwell
J Smith drawing fencing stuff
7 Broadbent 2 day old vines - 2 day 1/2 y vines

A & J Hutchison
Bales 48-18.6

Recd A & Wilkinson Co
£ 3.9.9 Interest

Stamps 3/-

5 SATURDAY [278-87] Dividends due at Bank

J Mitchell
R Craft
R White 1/2 y vines -
L Dipwell
7 Broadbent
J Smith drawing fencing -

J. Smith
5 days drawing 5/- 1 5 0
300 fencing stuff 25/- 3 15
Paid Smith 5/5/- 5 0 0
5/- to mch. -
£ 5.0.0

6 SUNDAY - 18 after Trinity [279-86]

7 MONDAY [280-85]

J. Mitchell
D. Craft
D. White
F. Broadbent

} yg vms -

D. White Cash 10/-

London
Loan 20.00
Stamps 4
20-4

8 TUESDAY [281-84]

J. Mitchell (farming)
D. Craft
D. White
F. Broadbent

} yg vms

Stamps 2/6

9 WEDNESDAY [282-83]

J. Mitchell
D. Craft
D. White
F. Broadbent

} 1/2 day yg vms -

P2 J. Rmie
ygaps 4/- £1-8-0

10 THURSDAY [283-82] Oxford Michaelmas Term begins

no work (net)

11 FRIDAY [284-81]

J. Mitchell (cellar)
D. Craft (farming) (stamps)
F. Broadbent cleaning stable

12 SATURDAY [285-80] • 1h 11m P.M. (Greenwich)

J. Mitchell (cellar) (stamps)
D. Craft (stamps) day

D. Craft Ag. £1

wrote to Lyane

13 SUNDAY—19 after Trinity [286-79]

14 MONDAY [287-78] Quarter Sessions Week. Fire Insurances expire

J. Mitchell } farming
R. White }
F. Broadbent } vines

R. Craft f1 - chq.

15 TUESDAY [288-77]

J. Mitchell } farming
R. Craft }
R. White }
F. Broadbent } vines
J. Kime }

16 WEDNESDAY [289-76]

J. Mitchell (2 day farm - 2 day cellar -)
R. Craft -
R. White -
F. Broadbent - } vines -
J. Kime }

Recd fr. Dept. Agriculture
Chq £2.5.0 for cutting -

J. Mitchell
Chq to date £8.2.0

17 THURSDAY [290-75]

J. Mitchell 2 day cellar -
R. Hollinshead -
R. Craft - } to Br -
R. White }
F. Broadbent } vines -
J. Kime 2 day }

18 FRIDAY [291-74] St. Luke, Evan.

R. Hollinshead }
R. Craft } Br. } (149 lbs) 1474 Gals term. 1/2 = 85.19.8
R. White } vines }
F. Broadbent - } vines 2 day - garden 2 day -
J. Kime " " 2 " old vines 2 day -
C. F. Lindeman
Freight 50 lbs - 1.10.9
£87.10.5
S. P. Papper
5 casks Sulphur 7/10/0
Freight 4/-
Freight of Ctd - 50 gns - 5/6-

19 SATURDAY [292-73]

J. Broadbent -
11 1/2 days 3/8 - 2.2.2
D. advanced 1
Pd £1.2.5
R. White
Up to date £3.4.9

20 SUNDAY - 20 after Trinity [293-72] 5h 58m P.M. (Greenwich)

S.S. Anniversary

21 MONDAY [294-71]

J. Mitchell & day ploughing & day of vines -
 D. Craft }
 D. White } young vines -
 F. Broadbent }
 J. Kime } gold vines

22 TUESDAY [295-70]

J. Mitchell }
 D. Craft } young vines
 D. White }
 F. Broadbent }
 J. Kime } gold vines -
 F. Broadbent }
 Cash 2/-

23 WEDNESDAY [296-69]

J. Mitchell } of vines
 D. Craft } farming
 D. White } of vines
 F. Broadbent } old vines -
 J. Kime }

24 THURSDAY [297-68] Michaelmas Law Sittings begin

J. Mitchell }
 D. Craft } getting timber for new cellar -
 J. Kime }
 F. Broadbent } gold vines
 D. White } of vines -

112) 455- / 4
 448

 7 2.8

 4

 10.8

5 12.6 29 12 3.15.
 1.6

 14 12.6

52.6
 2

 63.6

25 FRIDAY [298-67]

J. Mitchell }
 D. Craft } getting timber for cellar - 5.
 D. White } of vines
 F. Broadbent }
 J. Kime } gold vines -

26 SATURDAY [299-66]

J. Mitchell (cellar)
 D. Craft & day farming
 D. White }
 F. Broadbent } & day of vines -
 J. Kime }
 D. White to date.

F. Broadbent }
 Stamp 2/-
 D. Craft. Chg £ 5.

27 SUNDAY - 21 after Trinity [300-65] O 3h 6m P.M. (Greenwich)

(Lg. m)

28 MONDAY [301-64] SS. Simon and Jude, App.

Mr Sharp's fund for providing homes for respectable women 10/-

J. Mitchell (cellar)

J. Kime

10 days 4/- £2

A. G. Hutchison
1 cask Cement 13/6

J. A. Wilkinson
3 casks Cement 13/6 = £2 0 6

29 TUESDAY [302-63]

J. Mitchell (new cellar)

H. Craft - 1/2 day " " 1/2 day of vines)

H. White (1/2 vines)

J. Kime (1/2 vines)

F. Broadbent - 1/2 day of vines

30 WEDNESDAY [303-62]

J. Mitchell (1/2 new cellar)

H. Craft - 1/2 " " " 1/2 day old vines

H. White old vines

H. Hollinshead farming 5/-

31 THURSDAY [304-61]

J. Mitchell (1/2 new cellar)

H. Craft - 1/2 " " " 1/2 day old vines

H. Hollinshead farming

H. White old vines

F. Broadbent - 1/2 vines

3.8
13.9
17.7

1 NOV FRIDAY [305-60] All Saints' Day. Holiday, Stock Exchange.
Fox Hunting begins

J. Mitchell (1/2 new cellar)

H. Craft - 1/2 " " " 1/2 day old vines

H. Hollinshead farming -

H. White

F. Broadbent - 1/2 old vines -

J. Kime

8.2
10.4
18.6
28.8
39.0

2 SATURDAY [306-59]

J. Mitchell 1/2 day new cellar

H. Craft 1/2 " " " 1/2 day old vines

H. White 1/2 " old vines

F. Broadbent 1/2 " of vines

J. Kime old vines -

F. Broadbent -
Cheque £1-9-2

3 SUNDAY - 22 after Trinity [307-58] 7h 24m A.M. (Greenwich)

4 MONDAY [308-57]

J. Mitchell (new cellar -
 W. Craft
 W. White (old vines)
 J. Kime
 F. Broadbent (young vines)

Stamps 3/6

5 TUESDAY [309-56] Gunpowder Plot

J. Mitchell (new cellar - 1/2 day (well)
 W. Craft 1/2 " " " " Farming
 W. White old vines -
 J. Kime " " " " " "
 F. Broadbent 1/2 day young vines 1/2 day old vines

6 WEDNESDAY [310-55]

J. Mitchell 1/2 day well - 1/2 day cellar
 W. Craft 1/2 " Farming 1/2 day old vines
 J. Kime old vines
 F. Broadbent " "
 C. Cobby 1/2 day well 5/- paraq -

PA J. Mitchell
 - 12 days 4/- 2.8
 3 " 5/- 15-
 You + W. Mitchell 1. 5. 10
 Spring 1/5/10 4. 8. 10
 1/5/10 4. 5. 10

7 THURSDAY [311-54]

J. Mitchell 1/2 day cellar 1/2 day well -
 W. Craft -
 W. Hollinshead Jr Br -
 C. Cobby (well)
 W. White (1/2 day old vines 1/2 day young vines)
 F. Broadbent young vines
 J. Kime old "

8 FRIDAY [312-53]

J. Mitchell (well)
 W. Craft (Jr Br)
 W. Hollinshead (Jr Br)
 C. Cobby (well)
 J. Kime
 F. Broadbent young vines -
 W. White young vines -

Mr. J. Lindeman
 (5000) 1497 Gals Iron 1/2 (16,40,42)
 £87. 6. 6
 Freight p.m. - 5 35
 87. 11 11

J. Mitchell
 Freight on iron 1/-

9 SATURDAY [313-52] Prince of Wales born, 1841. Lord Mayor's Day

W. Craft 1/2 day young vines
 W. White 1/2 " "
 C. Cobby (well)
 J. Kime young vines 1/2 day

F. Broadbent -
 Chq. £1 -
 Recd fr. C. Lindeman
 205. 8. 3
 2 seals release 1/2 = 2. 4
 Cobler freight 4. 11 3
 4. 13 7
 Cr 93 Gals 1/2 = £5. 8. 6

10 SUNDAY - 23 after Trinity [314-51]

(J.S.M.)

18 MONDAY [322-43]

J. Mitchell $\frac{1}{2}$ day mending fence at Clibry - $\frac{1}{2}$ day cellar -
 W. Craft Farming -
 J. Kime
 F. Broadbent } of vines

19 TUESDAY [323-42] 8h 23m A.M. (Greenwich)

J. Mitchell } of vines
 F. Broadbent }
 W. White } of vines
 J. Kime }
 W. Craft Farming -

20 WEDNESDAY [324-41]

J. Mitchell (new cellar)
 W. Craft (farming)
 J. Kime
 W. White } of vines -
 F. Broadbent }

21 THURSDAY [325-40]

J. Mitchell (working)
 W. Craft pl. of vines
 W. White ~~pl. of vines~~
 J. Kime } of vines
 F. Broadbent }

22 FRIDAY [326-39]

J. Mitchell (new cellar)
 W. Craft of vines
 W. White ($\frac{1}{2}$ day of vines $\frac{1}{2}$ day old vines)
 J. Kime
 F. Broadbent of vines -
 W. Hollishead $\frac{1}{2}$ day drawing (new cellar)

Stamps of -

23 SATURDAY [327-38]

J. Mitchell (new cellar)
 W. Craft (old vines)
 W. White (of vines)
 J. Kime
 F. Broadbent $\frac{1}{2}$ day of vines
 W. Hollishead drawing new cellar
 W. White to date
 Paid J. Kime £3.15 18 $\frac{3}{4}$ days

24 SUNDAY - 25 after Trinity [328-37]

JSM

25 MONDAY [329-361]

James Lambkins interest for 3 years due - 8/10

J. Mitchell (cellar),
Dr. Craft (old vines),
Dr. White "
J. Broadbent young vines,

28 THURSDAY [332-333]

J. Mitchell ~~new~~ cellar
Dr. Drayton new cellar
W. Hollinshead new cellar
Dr. Craft - new cellar
J. Broadbent - new cellar
Dr. White off vines -

3.8 4/2
14.8
1.10
16.6
3.8 1/2
15.
2. Freight - 1 case ironmongery
1 Bale. Capping 1/1

Height - 16 qrs each 4/-
9 " " "
12 qrs each 5/2
16 qrs " " 5/2

26 TUESDAY [330-351] O 1h 18m A.M. (Greenwich)

J. Mitchell } new cellar.
Dr. Drayton }
Dr. White } young vines
J. Broadbent } today young vines
Dr. Craft }
Dr. Hollinshead } to Br -

29 FRIDAY [333-321]

J. Mitchell (cellar),
Dr. Drayton building new cellar,
J. Broadbent -
Dr. White } young vines
Dr. Craft building new cellar
Dr. Hollinshead (to London for timber) 5/-

1.6
5
12.6
2.6
15
1.17.6

Postal note for postage & stamps 2/6 = 7/6

27 WEDNESDAY [331-341]

J. Mitchell } new cellar
Dr. Drayton }
Dr. Craft }
W. Hollinshead } of Br
Dr. White } off vines
J. Broadbent } "
to J. Ludeman
no. 49, 44, 34 1709 Lat. term 1/2 = £99-13.10

30 SATURDAY [334-311] St. Andrew, Ap.

Dr. Drayton } new cellar
Dr. Craft } "
Dr. White } today young vines -

1 DEC SUNDAY - 1 in Advent [335-301]

2 MONDAY [336-29] c 9h 50m P.M. (Greenwich)

J. Mitchell (cellar)
 W. Drayton (new cellar)
 W. Craft
 W. White } yf vines
 F. Broadbent }
 W. Hollinshead (drawing for new cellar)

D. Chick
 paid 10/- interest, & £1- off
 principal -

3 TUESDAY [337-28]

J. Mitchell (cellar)
 W. Drayton (new cellar)
 W. Craft
 W. White } yf vines
 F. Broadbent }
 W. Hollinshead drawing timber new cellar)

Ralph & Josephson
 on acc. S. London £10

C. S. London £5.12. for
 timber

W. Elliott -
 400 ft. Timber 5/10ft. £1.00

4 WEDNESDAY [338-27]

J. Mitchell cellar
 W. Drayton new cellar
 W. Craft yf vines
 W. White " "
 F. Broadbent 1/2 day new cellar - 1/2 day yf vines

W. Craft
 Chq. £3-

Stamps 5/-

5 THURSDAY [339-26]

J. Mitchell new cellar.
~~W. Drayton~~
 W. White 1/2 day yf vines

6 FRIDAY [340-25]

J. Mitchell (cellar)
 W. Drayton } new cellar
 W. Craft - 1/2 day yf vines
 W. White new cellar
 F. Broadbent yf vines

7 SATURDAY [341-24]

J. Mitchell (cellar)
 W. Drayton } new cellar
 W. White }
 W. Craft -
 F. Broadbent - yf vines -
 J.M.

F. Broadbent
 9 1/2 days 3/8. 1. 14. 10
 horse 5 wks 1/2 - 5
 £1. 9. 10

8 SUNDAY - 2 in Advent [342-23]

James Guillard's interest for 1/2 year due £4.16.0 / £160 pa.
 (£2 @ 6%)

16 MONDAY [350-15]

J. Mitchell (cellar)
J. Drayton (new cellar)
J. White " "
J. Craft old vines -

17 TUESDAY [351-14] Oxford Michaelmas Term ends

J. Mitchell (cellar)
J. Drayton (new cellar)
J. White " "
J. Craft to Br
J. Hollinshead " "

18 WEDNESDAY [352-13] Ember Day. 8h 35m P.M. (Greenwich)

J. Mitchell cellar
~~J. Drayton new cellar~~
J. White " "
J. Craft
J. Hollinshead to Br

no 4122
39
50 qrs
C. F. Lindenman
1523 Gals term. 1/2 £88.16.10

J. Broadbent

3 1/2 days 3/8 = 1.0.2 - advance 1/-

~~20/2/11~~ £1

Insurance 1/-

Off freight 19 qrs 1/5/9

19 THURSDAY [353-12] Cambridge Michaelmas Term ends

J. Mitchell (cellar)
~~J. Drayton~~ new cellar
J. White " "
J. Craft " "

P. O'Neill
fence £3 18 9

Recd. O.K. Young
Chq. £14.5/4

5 stews 1/15/- 8.15
2 kepers 1/16 2.12
1 " 3. 7

Less com. & post due. 14 14

20 FRIDAY [354-11] Ember Day

Miss Blair 2/6 for lunas dinner for poor. pd.

J. Mitchell
J. Drayton (new cellar)
J. White " "
J. Craft
J. Hollinshead to Br

+5/- before
J. Hollinshead 10/-
J. White 2/6

R. F. Graham
Haye 2/9 £8.0.6
Freight 6 11

21 SATURDAY [355-10] St. Thomas, Ap. Michaelmas Law Sittings end. Ember Day

J. Mitchell
J. Drayton new cellar -
J. White " "
J. Craft
J. Hollinshead to Br

C. F. Lindenman
805 Gals Shred 1/2 £46.19.2
731 Gals term. 1/2 £42.12.10
£89.12

22 SUNDAY - 4 in Advent [356-9]

Paid C. Coffey - wages 1/11
" J. White up to day
£54 2

23 MONDAY [357-81]

J. Mitchell (cellar)
W. Craft (egg vines)

W. Craft
Cheque £3

Put 12 bullocks in Sternbeck's paddock
@ 6 per head per week

24 TUESDAY [358-71]

No work

25 WEDNESDAY [359-61] Christmas Day. Quarter Day.
© 0h 16m P.M. (Greenwich)

No work

26 THURSDAY [360-51] St. Stephen, M. Boxing Day. Bank Holiday

No work

W. Craft & Josephson
On acc S. London £10

27 FRIDAY [361-41] St. John, Evan.

No work

28 SATURDAY [362-31] Innocents' Day

J. Lynch & Co. P. N. due £30.
No work

29 SUNDAY—1 after Christmas [363-21]

30 MONDAY [364-1] Quarter Sessions Week

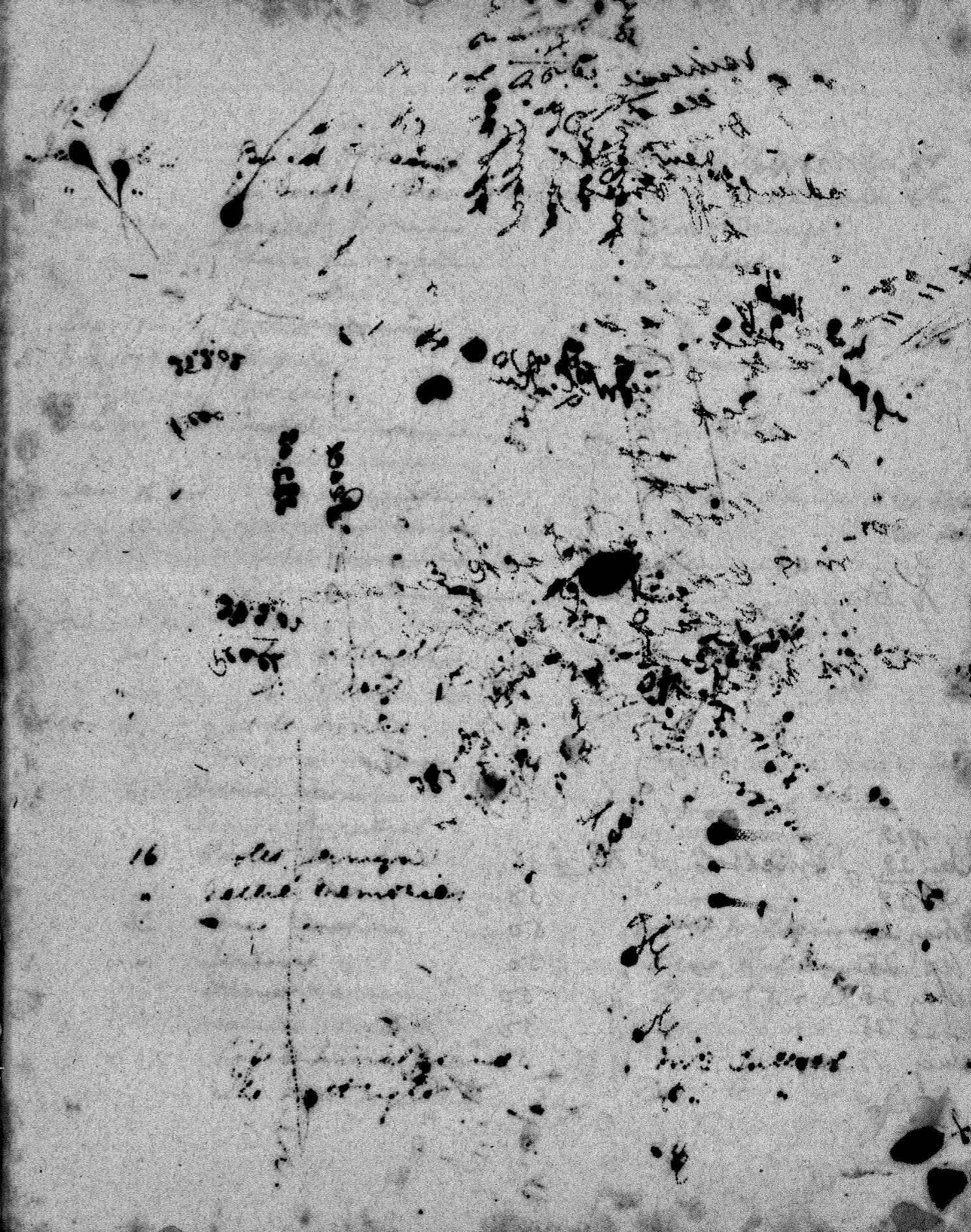
R. Drayton (new casks)
F. Broadbent (by ones)

31 TUESDAY [365-01]

"Presbyterian" subscription due 5/-

R. Drayton (new casks)
F. Broadbent (" ") -

1902.			
Jan 28.	J Lynch & Co.	P. N.	£ 36
Feb 28.	"	"	50
Mar 28.	"	"	50
Apr. 28	"	"	50
May 28	"	"	50
June 28	"	"	50
July 28.	"	"	50



Books.
Memoranda of Things Lent, &c.

1901	Date.	Article.	To whom lent.	Returned.
Jan 26	-	Bird of Passage	Mrs J. Y. Tullock	Feb. 6 th
"	"	Sancti's Grand daughters	"	" 6 th
Nov. 1900		Scarlett Woman	Vera Bridge	
		Pharos the Egyptian	J. Mitchell	
		Dr. Fikola	Ed Bridge	
Dec. 1900.		David Harum	A. W. Loring	ret. Feb 5 '01
Nov. 1899.		Helma	Mrs Harcastle	
July 15-1900.		Doreen	"	
Mar 17.	"	Isabel Carnaby	Mrs Baker	
"	"	Dr. Fikola's	"	
Jan. 16-1901		Prince of Swindlers	Mrs F. Wilkinson	ret. Feb 26
" 19		Jewel Mystery	"	
Nov-1900.		Life's Trial Ground	Glennore	
		The real Lady Wilda	"	
Jan. 1901.		Simon Dale	Mrs Penno	
29.	-	The bright	Mrs F. Wilkinson	
"		St. Olaves	"	
Feb. 2.		Little Annie	A. W. L.	
2.		Pearson's for Dec.	Mrs F. Wilkinson	Feb 26
6		David Harum	Mrs Tullock	Feb. 16
		Janice Meredith		
16		Violet Jennings		
"		Belle's Friends		
26.		Three Teachers	Mrs F. Wilkinson	
"		Science	Rene Wilkinson	
		David Harum	Mrs Corner	
		Janice Meredith	Glennore	
Mar 17.		Life's Trial Ground	Mrs Tullock	
		The bright	"	
May 17		Dr. Fikola's	Mrs Tullock	
		Pearson's for Dec	Helma	
		Isabel Carnaby	Mrs Tullock	

[Faint, mostly illegible handwritten notes and scribbles on the left page, including some numbers like '1091' and '1092'.]

Office opened Nov. 15-1900

Nov 15-1900

Telegrams sent from Pokolbin Office

1900

- Nov. 26. A. H. Lindeman 1/-
- Dec. 3. A. H. Lindeman 1/-
- 13. C. F. Lindeman 1/-
- " Rev. J. Bennie 1/-
- 18. Station Master Brampton 1/-
- 1901 Jan. 16. F. Hermanns 1/-
- 21. G. C. Craig 1/-
- 29. Station Master Brampton 1/-
- " Rev. J. Bennie (J. Mrs B) 1/-
- Feb. 1- Kim & Sons 1/- (about parcel)
- 11. Station Master Brampton 1/-
- Mar. 8 2 Telegrams sent by Prof. Blunns.
- 12 G. Howell Inglefield 1/-
- 25. Mrs Sheppard 1/-
- 30. Station Master Allendale 1/-
- Apr. 1 G. & Stephens - Inorpeth. 1/5- Portage 2/-
- May 7. Station Master Brampton 1/-
- 25 Mrs Lynch (J. Mr Lynch) 1/-
- July 1. Station Master Brampton 1/-
- June 26- Professor Blunns - 1/- Collect.
- July 16. Station Master Brampton 1/-
- July 2. Prof. Blunns. 2 telegrams
- Aug. 21. Prof. Blunns 1/- collect.
- 22 C. F. Lindeman 1/-
- Sep. 21. Lynch & Co. 1/10 - reply 1/- - 2/10-
- Oct. 16. R. Co. Inorpeth & reply 12/1 -
- Nov. 5. Mrs Baker 1/-
- Mrs Bennie 1/-
- 19. Station Master Brampton 1/-
- Dec. 3. C. F. Lindeman 1/-
- 7. F. Hermanns 1/-

[Faint, mostly illegible handwritten notes and scribbles on the right page, possibly including a diagram or map in the upper right corner.]

Dr.

Banks

JANUARY, Cash Account.

Cr.

David Harum	} p to George
The Buttrick	
Mona Maclean	Mr Baker
Let me fight	} Zelma -
Henry's Choice	
The Sowers	Mr Snior

Telegrams -

Dec 12 - Station Master Bramton 1/-
 16 - R Macdonald
 17 - Mr Sewell

2
 13.6
 7.9
 11.9
 3.6

1.13.6

19

[Faint handwritten notes and scribbles, possibly including names like 'Station Master Bramton']

Station Master Bramton

Dr.

FEBRUARY, Cash Account.

Cr.

	Books Lent	
	Green Golden	
June 18	Herbert's Choice	Mrs. J. Wilkeson
	Let me forget	
	David Harum	Mrs. J. Wilkeson
26	David Harum	
	The Midnight	Rev. J. George
Apr.	Mona Maclean	Mrs. Baker
May	The Powers	Mrs. Baker
June 30	Let me forget	
	Bartholomew's	Mrs. Tulloch
	Let me forget	Mrs. Corner
21 Sep	Let me forget	(Drollie) Mr. G. Snell
	Let me forget	Oakdale
Oct 13	B. Weather's trial	Mrs. Tulloch
	Green Golden	Mrs. Corner
	Little Prince	
29	Blue of Passage	Mrs. Chapman
"	Let me forget	
"	Life's trial found.	Mrs. Day
"	Let me forget	Coolatta
Oct 26	Little Prince	"
Dec. 17	David Harum	
	Scarlet woman	Mrs. Baker
	Little Prince	
	On the face of the waters	
	Let me forget	Mrs. Tulloch

Dr.

MARCH, Cash Account.

Cr.

July 29-1901	Barrett sold to	
	Turner & Co	
	102 Sussex St	
	Sydney	
	500 Gals. Hermitage No. 12 - 1901. @ 1/-	
	Terms: Cash within a month - less 2 1/2% discount	
Aug. 1 st 1901	To	
	E. Cuffaldi	
	2. V - Markets St	
	Sydney	
	300 Gals. Sherry 1/2 -	
Aug. 1 st 1901	To	
	Mrs. G. Cominette	
	41 Market St	
	Sydney	
	300 Gals. No. 2. Rusling 1901 @ 1/-	
	Terms: Cash within a month - less 2 1/2% discount	
Sep. 12 - 1901 -	To	
	Holmes	
	Pitt St	
	Sydney	
	1200 Gals. Pressings 1/- or if kept till	
	January - 1/2 per gallon -	

Dr.

APRIL, Cash Account.

Cr.

Telegrams.

Dec. 16. J. M. Macdonald 1/2

17. M. Benuie 1/2

[Faint handwritten notes and scribbles]

[Large area of heavy ink splatters and illegible scribbles]

Dr.

AUGUST, Cash Account.

Cr.

Dr.

SEPTEMBER, Cash Account.

Cr.

$$\begin{array}{r} 25. - 1.10.0 \\ 12.10. \\ 2.10. \\ \hline 40 \end{array}$$

$$\begin{array}{r} 40 = 2.8.0 \\ 12.8 \\ \hline 1.11.9 \\ \hline 1.11.9 \end{array}$$

$$\begin{array}{r} 12.10 \\ 25.0 \\ \hline 59 \end{array}$$

$$\begin{array}{r} 12.10 \\ 12.10 \\ \hline 24.20 \end{array}$$

$$\begin{array}{r} 12.5 \\ 1.2\frac{1}{2} \\ 14 \\ \hline 16.11 \end{array}$$

$$\frac{1}{2} 800 66.73.4$$

$$\begin{array}{r} 14 \\ 84 \\ 10 \\ \hline 840 \end{array}$$

$$\begin{array}{r} 1\frac{1}{2} \\ 2\frac{1}{2} \\ 2\frac{1}{2} \\ \hline 7\frac{1}{4} \end{array}$$

$$\begin{array}{r} 1.2\frac{1}{2} \\ 40 \\ \hline 2.84 \end{array}$$

$$\begin{array}{r} 4\frac{1}{2} \\ 1.2\frac{1}{2} \\ \hline 1.2\frac{1}{2} \\ 18 \\ \hline 1.1.9 \end{array}$$

$$\begin{array}{r} 14/16.11 \\ 4.2\frac{3}{4} \\ 3 \\ \hline 12.8 \end{array}$$

X

~~11600~~

$$\begin{array}{r} 12/160 \\ 13. \\ \hline 128010 \\ 20583 \\ \hline 33391 \end{array}$$

$$\begin{array}{r} 59 \\ 3.11.4 \\ 15.0 \\ \hline 3 \end{array}$$

$$\begin{array}{r} 3.8 \\ 10\frac{1}{2} \\ 1.16.8 \\ 1.10 \\ \hline 1.18.6 \end{array}$$

$$\begin{array}{r} 90.14.0 \\ 88.16.10 \\ 89.12 \end{array}$$

$$\begin{array}{r} 269.2.10 \\ 488.16.8 \end{array}$$

$$\begin{array}{r} 757.19.6 \\ 333.9.1 \\ \hline 924.10.5 \end{array}$$

$$\begin{array}{r} 3.8 \\ 22. \\ \hline 1547 \\ 1523 \\ 1536 \\ \hline 4606 \end{array}$$

$$\begin{array}{r} 38 \\ 1.13.10 \\ \hline 1.14.10 \end{array}$$

Dr.

OCTOBER, Cash Account.

Cr.

Dr.

NOVEMBER, Cash Account.

Cr.

~~8 1.2~~

38	12	57
19½	152	
<hr/>		
3.49.8	12-8	
1.10	19	
<hr/>		
3 11 .6	3	57

3.8

20

3.13.4

1.10

3.11.6

~~1.10~~

25
<u>9½</u>
15½

~~1.10~~

3.11.6

1.10

Dr.

DECEMBER, Cash Account.

Cr.

Dr.

ANNUAL CASH SUMMARY

Cr.

6.50
3.4
4.19.8

6.8.4
4.19.8
7.9.8

Balance from last year

Balance from last year

January

January

February

February

March

March

April

April

May

May

June

June

July

July

August

August

September

September

October

October

November

November

December

December

Balance carried forward

Balance carried forward

£

£

1592 78
1513 6 10
79 - 10
74 3 2
3 10
19
5 12 10
2 3 1 1/2
5 15 11

49.3.2

12 110
1-2

12/190
15.10

19
3
17

57
15
42

2.2.2
11 1/2
2.3.1 1/2

35-
16.159
20.136
17.63
3) 89.15.6
29.18.6
1.10.H
28.7.9

1.9.0
1.H
1.10.H

6.2.2
11.4
5.0.26
4
20
28
166
42
58.6

6.2.0
1-26
5.1.2
4
21
28
170
42
59.0

2.10
3.10
3-18
4
12
28
104
25
354

3.3.16
2.21
3-23
4
12
28
99
26
359

30.6
3
2.1.6
4
9
28
48
18
25.8

3-4
4
12
28
100
24
340

3-8
9.11
3.1.25
14
13
28
109
28
38.9

Divide 3.36 by .205

Divide 51.2 by 613.912

105) 3.360 (32.
315
210
210

613.912) 57.20000 (93.
5711296
2087040
1841736
245304

1073) 4.98152 (4.624
458
601
584
145
146
292
292

4.3) 4.98152 (16824
438
601
586
145
146
292
292

10045
8.45
395
300
600
3375

8045
8.9
695
600
675

99.9.2
31.1.6
30.5.5
41.18.9
36.12.5
42.18.11
212.6.2
50
466
728
96.5

150.000
466
616

8000
12) 16000
1333-4
66134
400

1813
150
1963

1963
616
2549
212
2191

1745
12) 13490
290-10
84.5
101.13.10
989.13

14 1/2 12 2

191028
17552
73693072
15391
08365
413926
8327591
00086
9101519556

3.4
6.8
1.5
113
37.392685
95.890315

316.281
30.379624
285.901396

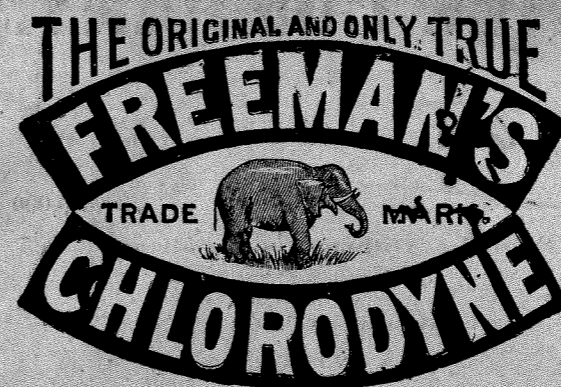
11
3.16847
7.83153

0759638
00684
3000
3038552
6079104
4557828
000519592592
3000
6000
12
15
920000
60
120
120

31415967
3795
157079835
283743703
219911769
94247901
119223594765

Divide 74.23943 by 6.12
6.12) 44.23943 (12.1306748
612
1303
1224
799
612
1877
1836
4130
3673

582.12.0
20
7252
12
79024
434
434
14) 865906185
20
14
119
112
70
70
4580
4284
2960
2448
5120
4896
124



FOR COUGHS, COLDS, INFLUENZA, &c.
It is the best known remedy for Coughs, Colds, Consumption, Whooping Cough, Bronchitis, and Asthma.
It effectually checks and arrests those too-often fatal diseases: Diphtheria, Diabetes, Fever, Croup, Ague, etc.
It acts like a charm in Diarrhoea, and is the only known specific in Cholera and Dysentery.
It is extensively used by Medical Men in their official and private practice at Home and Abroad.
Sold by Medicine Dealers all over the World, in bottles, 1s. 1d.; 2 oz., 2s. 9d.; 4 oz., 4s. 6d.; half-pints, 11s.; and pints, 20s. each; and postage free by the Inventor.
RICHARD FREEMAN, 70, KENNINGTON PARK ROAD, LONDON, S.E.

N.B.—Lord Chancellor Selborne, Lord Justice James, and Lord Justice Mellish, decided in favour of FREEMAN'S ORIGINAL CHLORODYNE, and against Browne and Davenport, compelling them to pay all costs in the suits.—See Times, July 24th, '73.

GOLD MEDALS, PARIS, 1878, 1889.
JOSEPH GILLOTT'S PENS.
The only Award at Chicago, 1893.
Nos. for Bankers, &c.: Barrel Pens, 225, 226, 252. Slip Pens, 332, 909, 287, 166, 404, 601, 7,000. In Fine, Medium, and Broad Points.
The Turned-up Point, 1,032.
Of Highest Quality; and, having Greatest Durability, are therefore Cheapest.

The Cancer Hospital (Free), Fulham Road, London, S.W.
THE only Special Hospital for poor persons afflicted with this fearful disease who are admitted FREE on their own application alone. Upwards of 100 Beds, of which a number are provided for the use of patients who may remain for Life. Out-Patients seen daily at Two o'clock, except Sundays.
Subscriptions and Donations urgently solicited.
Bankers: Messrs. Coutts & Co., Strand, W.C. **FRED. W. HOWELL, Secretary.**

ESTABLISHED 1824.
SCOTTISH UNION AND NATIONAL INSURANCE COMPANY.
CAPITAL - - SIX MILLIONS STERLING.
Life Policies in force, Eleven Millions Sterling.
Funds exceed Four Millions Sterling.
LIFE ASSURANCE.—Under the LIFE ASSURANCE SYSTEM of this Company, the Assured obtain every privilege and advantage which experience has suggested as possible, added to the safety of dealing with a Company of over 75 YEARS' standing, possessing large ACCUMULATED FUNDS.
FIRE INSURANCE.—Almost all descriptions of Property Insured on the most favourable terms.
London—3, KING WILLIAM STREET, E.C. Glasgow—150, WEST GEORGE STREET.
Head Office—35, ST. ANDREW SQUARE, EDINBURGH.

ACCIDENT INSURANCE COMPANY
(Limited).
Accidents
Disease
Fidelity Guarantees
Workmen's Compensation
Plate Glass
Burglary
Founded 1849. Claims paid, £1,000,000.
Apply for Particulars and Rates for Insurance.
10, ST. SWITHIN'S LANE, LONDON, E.C.
THOS. POTTER, Manager and Secretary.

EASTERN COUNTIES FIRE OFFICE
Also Burglary, Accident, Disease,
Workmen's Compensation, Fidelity Guarantee, & Plate Glass Insurance.
Head Office: MARKET PLACE, HULL.
London Office: 35, BUCKLERSBURY, E.C.
LOWEST RATES. PROMPT SETTLEMENTS. ABSOLUTE SECURITY.
Nearly all Classes of Fire Insurance transacted at Home & Abroad.
Branch Offices in the United Kingdom at BIRMINGHAM, BRISTOL, BELFAST, DUBLIN, GLASGOW, LEEDS, LIVERPOOL, MANCHESTER, and Agencies in all the important towns.
Applications for Agencies invited in places where the Company is not fully represented, at Home and Abroad.
HENRY R. CARR, Secretary.
Annual Income exceeds - - - £100,000
Total Claims Paid exceed - - - £250,000

YORKSHIRE FIRE LIFE ACCIDENT INSURANCE COMPANY. Estab. 1824.
LIFE DEPARTMENT.
WORLD-WIDE FREEDOM OF TRAVEL.
LIBERAL NON-FORFEITURE CONDITIONS.
FOUR-FIFTHS of the Profits divided amongst Participating Policy-holders every five years.
INTERMEDIATE BONUSES and LIBERAL SURRENDER VALUES.
FIRE INSURANCES effected on all classes of Property at moderate rates.
EMPLOYERS' LIABILITY INSURANCES effected at moderate rates.
HEAD OFFICE - - YORK.
J. A. CUNNINGHAME, Secretary and General Manager.

BRITISH INDIA STEAM LINES.
Departures from LONDON for
COLOMBO MADRAS & CALCUTTA - Fortnightly.
KURRACHEE & BOMBAY - - - Three-Weekly.
QUEENSLAND & JAVA PORTS - - Fortnightly.
EAST AFRICA (via Aden) - - - } Four-Weekly.
SEYCHELLES (via Colombo) - - - }
MAURITIUS (via Colombo) - - - Fortnightly.
GOOD CUISINE COMFORTABLE AND COMMODIOUS CABINS.
Apply to
GRAY, DAWES & Co., 23, Great Winchester St., London, E.C., or Craven House, Northumberland Avenue, W.C., or to GELLATLY, HANKEY & Co., Glasgow, Manchester, Liverpool and Antwerp.

ROCK LIFE ASSURANCE COMPANY.

ESTABLISHED 1806.

WILFRID ARTHUR BEVAN, Esq.
The Rt. Hon. ST. JOHN BRODRICK, M.P.

Trustees.
Col. ALFRED GEORGE LUCAS.
Sir CUTHBERT EDGAR PEEK, Bart.
SAMUEL HARVEY TWining, Esq.

Sir CHARLES RUGGE-PRICE, Bart.
The Hon. CHARLES HEDLEY STRUTT, M.P.

WEALTH—SECURITY—STABILITY.

Paid in Claims upwards of - - - £11,600,000

Provision for Old Age Pensions. Low Premium Rates for Without-Profit Policies.

WORKMEN'S COMPENSATION ACT, 1897.

Proposals received for Insurances under this Act and for General Accidents.

Chief Office: 15, NEW BRIDGE STREET, LONDON, E.C. GEORGE S. CRISFORD, Actuary.
APPLICATIONS FOR AGENCIES INVITED.

3.85
19.4

SIXTY YEARS' SUCCESS.

WHELPTON'S PURIFYING PILLS

FOR INDIGESTION, HEADACHE, BILIOUSNESS, CONSTIPATION.

Invaluable for Ladies.

7½d., 1s. 1½d., and 2s. 9d. Of all Chemists.

Free by Post in the United Kingdom for 8, 14, or 33 stamps.

G. WHELPTON & SON,
3, Crane Court, Fleet Street,
London, E.C.

ESTAB. 1835.

TRADE MARK.

0132

BAYLISS JONES & BAYLISS'

IRON HURDLES, FENCING, RAILING, GATES, TREE-GUARDS, WIRE FENCING AND NETTING.

ALSO MAKERS OF POULTRY, LAWN-TENNIS, AND CRICKET-GROUND FENCING, DOG KENNEL RAILING, WINE BINS, GARDEN SEATS BARROWS, &c.

AT VICTORIA WORKS, WOLVERHAMPTON.

ILLUSTRATED CATALOGUE OF ALL KINDS OF HURDLES, FENCING, GATES, &c. FREE.

LOW PRICES.

SPECIALISTS IN OFFICE AND LIBRARY FURNITURE AND FITTINGS.

Our Illustrated Catalogues, which are sent free per return of post to all applicants contain full information regarding our large and varied Stock of Unique Appliances. Every Business Man who appreciates the value of a well-equipped Office, every Professional Gentleman who desires Comfort and System in the Study, or Library, should make a point of inspecting our goods before purchasing elsewhere.

Derby Roll-Top Desks, Globe Filing Cabinets, and Elastic Bookcases.

are all three exclusive specialties—the finest in the World. Directors' Tables, Tilting Chairs, Stools, Files, Book-keepers' Desks, Copying Presses, &c.

When writing for particulars, please mention Letts's Diaries.

OVER 22 AWARDS RECEIVED. Telephone No. 317 Holborn.

THOMAS TURNER (Leicester), Ltd.,
44, HOLBORN VIADUCT, LONDON, E.C.;
23, Snow Hill, BIRMINGHAM; and LEICESTER.

SCOTTISH WIDOWS' FUND LIFE ASSURANCE SOCIETY

EDINBURGH—9, St. Andrew Square. LONDON—28, Cornhill, and 5, Waterloo Place.

THE WHOLE FUNDS AND PROFITS BELONG TO THE POLICYHOLDERS,

the latter being divided among them alone, and the result is that the Bonus Additions and other Financial Advantages accruing to their Policies have been unusually large, as clearly shown in the Tables in the Prospectus relating practically to every existing Policy.

Funds, £15,500,000. Revenue, £1,600,000.

THE EQUITABLE LIFE ASSURANCE SOCIETY

Of the UNITED STATES.

ESTABLISHED 1859.

Surplus over all Liabilities amounts to nearly THIRTEEN MILLIONS STERLING.
This Surplus belongs exclusively to Policyholders.

Paid to Policyholders in 1899 - - - - - Over £5,000,000 Stg.
Paid to Policyholders and Accumulated during 40 years - - - - - Over £120,000,000 Stg.

Policies of the Equitable of the United States secure:—
1. An Excellent and Safe Investment. 3. Funds for Starting Son or Daughter.
2. Income for Life for a Wife or Beneficiary. 4. Capital for Education of Children.
5. Absolute Provision for old Age.

Amounts of Cash Surrenders, Loans, Paid-up Assurance are written in the Equitable's Policies and Guaranteed.
Head Office for Great Britain and Ireland:—6, PRINCES STREET, BANK, LONDON, E.C.
A. MUNKITTRICK & W. TRIGGS, General Managers.

UNIVERSAL LIFE ASSURANCE SOCIETY.
Established 1884.

EXCEPTIONAL SECURITY. LOW PREMIUMS. LARGE ANNUAL CASH BONUSES.

For 40 years the Annual Reductions of Premium on With Profit Policies of six years' standing have not fallen below 45 PER CENT. of the ANNUAL PREMIUMS.

INDIAN ASSURANCES at FAVOURABLE RATES.

Chief Office:—1, KING WILLIAM STREET, LONDON, E.C.
G. F. HARDY, F.I.A., Actuary & Secretary.

THE SMITH-PREMIER TYPEWRITER

OUR BEST FRIENDS .
are the long-time Users of the

SMITH-PREMIER TYPEWRITER

Those who from experience have learnt its merits, and who testify that its capacity for good work all the time is unequalled and that repair bills are reduced to a minimum.

SEND FOR ART CATALOGUE.

THE Smith-Premier Typewriter Co.,
14, Gracechurch St., London, E.C.

NORWICH UNION MUTUAL LIFE OFFICE.

Claims Paid ... Over TWENTY MILLIONS Sterling.

Accumulated Funds nearly	£4,000,000
Bonuses Declared exceed	£4,000,000
New Business (1898)	£1,707,483
Annual Income (1898)	£601,000

OLD AGE PENSIONS. ENDOWMENTS FOR CHILDREN AND ADULTS.

Head Office:—NORWICH.
London Offices:
60, Fleet Street, E.C. | 195, Piccadilly.
71 & 79, King William Street, E.C. | 1, Victoria Street, S.W.
3, Lincoln's Inn Fields, W.C.

WHITFIELD'S SAFES

AND IRON DOORS,

11 & 12, St. Andrew's Hill, London, E.C.

WORKS: BIRMINGHAM.

2.6 13 1/2
1.12.6 3
13 9