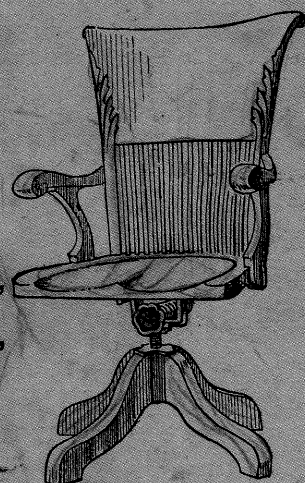


# LIBRARY and OFFICE FURNITURE.



We Stock—

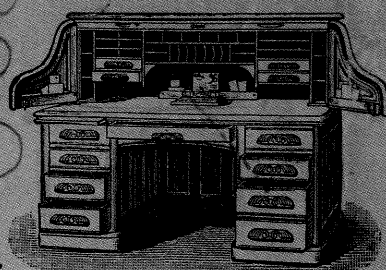
DERBY DESKS,  
GLOBE FILES,  
FILING CABINETS,  
DOCUMENT FILES,  
WERNICKE BOOKCASES,  
REVOLVING BOOKCASES,  
REVOLVING CHAIRS,  
CARD TABLES,  
WRITING TABLES,  
DESK TRAYS,  
FOLDING TABLES,



All prices  
in  
DESKS  
from  
£6 6 0

BEST  
QUALITY.

Alike a  
NECESSITY  
and a  
LUXURY.



Pulling down the Roll Cover  
locks the entire Desk  
automatically.

All our Goods are the STANDARD for Excellence.

Send for Illustrated Catalogues or call and inspect our Stock.

OFFICE AND LIBRARY  
FURNITURE.

THOMAS TURNER 44, Holborn Viaduct, London, E.C.  
7 & 9, Newarke Street, Leicester.

SEE ALSO MY ADVERTISEMENT INSIDE THIS COVER.

Insist Upon Having

## MILKMAID BRAND CONDENSED MILK

The Original and Best.

Avoid low-priced Brands from which the cream has  
been abstracted; and ask for the "Milkmaid" Brand,  
the best for all purposes.

THE MOST NUTRITIOUS COCOA.

## E P P S'S

GRATEFUL—COMFORTING.

## C O C O A

FOR BREAKFAST AND SUPPER.

Always Order

# Whisky and Schweppe OR Brandy and Schweppe,

otherwise waters of inferior quality are often supplied.

SCHWEPPE'S WATERS ARE SUPPLIED TO THE QUEEN.

Works: Hendon.

Head Office: 51, Berners Street, London.

# Letts's

## No. 33

## AUSTRALASIAN

# ROUGH DIARY

WITH A WEEK IN AN OPENING,

FOR

## 1898.



An Edition giving more space (No. 44) is published in  
Paper Boards, also CLOTH, Plain, and Interleaved  
Blotting.

PUBLISHED FOR

Letts's Diaries Company, Limited,

BY

CASSELL & COMPANY, Limited, London, Paris & Melbourne.

HAZELL, WATSON & VINEY, LD., PRINTERS, LONDON AND AYLESBURY.







# THE LAW GUARANTEE AND TRUST SOCIETY, Limited.

Subscribed Capital, £1,000,000. Paid up, £100,000.  
Reserve Fund, £55,000.

**Fidelity Guarantees** on behalf of Managers, Secretaries, Cashiers, and others holding situations of trust.

**Mortgage Insurance.** **License Insurance.**  
**Debenture Insurance.**

**Contingency Insurance** (re Lost Documents, Missing Beneficiaries, Defects in Title, &c.)

**Trusteeships** under Wills, Marriage Settlements, &c., and for Debenture Holders.

Head Office: 49, CHANCERY LANE, LONDON, W.C.  
City Office: 56, MOORGATE STREET, E.C.  
General Manager & Sec., THOS. R. RONALD. Assist. Sec., W. S. BATES.

# COUNTY FIRE OFFICE,

50, REGENT STREET, W., & 14, CORNHILL, E.C., LONDON.

FOUNDED 1807.

The Premium Income of this Office is derived from Home business only, no foreign risks being undertaken.

The Rates of Premium charged are the same as those of other leading Companies.

The Return System which has been adopted by this Office since its foundation offers an exceptional advantage.

Agents in all principal Towns.

GEO. W. STEVENS } Joint Secretaries.  
B. E. RATLIFF }

# HAND-IN-HAND SOCIETY.

Instituted 1696.

The OLDEST INSURANCE OFFICE.

LARGE BONUSES.

Annual Income - - £378,781

Accumulated Funds - £2,806,213

26, NEW BRIDGE STREET, E.C.

# THE BRITISH LAW FIRE INSURANCE COMPANY, LIMITED,

5, LOTHBURY, LONDON, E.C.

(With Branches throughout the Kingdom.)

Subscribed Capital - - ONE MILLION.

Paid-up Capital & Reserve - £123,000.

Gentlemen in a position to introduce Business are invited to undertake Agencies.

# THE HONEY OF WISDOM!!!

We gather the Honey of Wisdom from Thorns, not from Flowers.

## NOBILITY OF LIFE.

"Who best can suffer, best can do."—MILTON. What alone enables us to draw a just moral from the Tale of Life?

"Were I asked what best dignifies the present and consecrates the past; what alone enables us to draw a just moral from the Tale of Life; what sheds the purest light upon our reason; what gives the firmest strength to our religion; what is best fitted to soften the heart of man and elevate his soul—I would answer, with Lassus, it is 'EXPERIENCE.'"  
—LORD LYTTON.



As an illustration of the BENEFICIAL EFFECTS of ENO'S 'FRUIT SALT,' I give you particulars of the case of one of my friends. SLUGGISH ACTION of the LIVER and BILIOUS HEADACHE so affected him that he was obliged to live upon only a few articles of diet, and to be most sparing in their use. This did nothing in effecting a cure, although persevered in for twenty-five years, and also consulting eminent members of the faculty. By the use of your 'FRUIT SALT,' however, he now enjoys VIGOROUS HEALTH; has never had a HEADACHE nor CONSTIPATION since he commenced it, and can partake of his food in a hearty manner. There are others to whom your remedy has been so BENEFICIAL in various complaints that I think you may well extend its use *pro bono publico*. I find myself that it makes a very REFRESHING and INVIGORATING drink.—I remain, yours faithfully, J. W. NEIL.

**S**CARLET FEVER, PYÆMIA, ERYSIPELAS, MEASLES, GANGRENE and almost every mentionable disease.—"I have been a nurse for ten years, and have nursed cases of scarlet fever, pyæmia, erysipelas, measles, gangrene, cancer, and almost every mentionable disease. During the whole time I have not been ill myself for a single day, and this I attribute to the use of ENO'S 'FRUIT SALT,' which has KEPT my BLOOD in a PURE STATE. I recommend it to all my patients during convalescence. Its VALUE as a MEANS of HEALTH CANNOT be OVERESTIMATED. A PROFESSIONAL NURSE (Qualified)."

**H**EADACHE AND DISORDERED STOMACH.—"After suffering two and a half years from severe headache and disordered stomach, and after trying almost everything without any benefit, I was recommended to try ENO'S 'FRUIT SALT,' and before I had finished one bottle I found it doing me a GREAT DEAL of GOOD, and am RESTORED to my USUAL HEALTH; and others that I know that have tried it have not enjoyed such good health for years.—Yours most truly, ROBERT HUMPHREYS, Post Office, Barrasford."

THERE IS NO DOUBT THAT where it has been taken in the earliest stages of a Disease it has in innumerable instances PREVENTED a SERIOUS ILLNESS. The effect of ENO'S 'FRUIT SALT' on any DISORDERED and FEVERISH condition is SIMPLY MARVELLOUS. It is, in fact, NATURE'S OWN REMEDY and an UNSURPASSED ONE.

The value of ENO'S 'FRUIT SALT' cannot be told. Its success in Europe, Asia, Africa, America, and Australia proves it.

CAUTION.—Examine each Bottle, and see that the Capsule is marked ENO'S 'FRUIT SALT.' Without it you have been imposed on by a worthless imitation. PREPARED ONLY BY J. C. ENO, Ltd., AT THE 'FRUIT SALT' WORKS, LONDON, BY J. C. ENO'S PATENT.

# Letts's

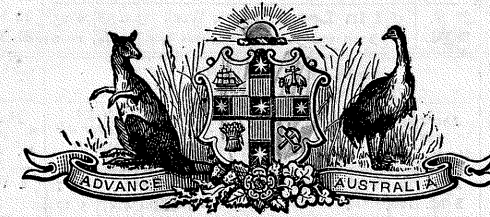
# AUSTRALASIAN DIARY

## AND ALMANAC

FOR

# 1898.

BEING THE SIXTY-FIRST YEAR OF THE REIGN OF HER MAJESTY, QUEEN VICTORIA—(Accession June 20, 1837).



PUBLISHED FOR

## LETTS'S DIARIES COMPANY, LIMITED,

BY

## CASSELL & COMPANY, LIMITED,

LONDON, PARIS AND MELBOURNE.

[ALL RIGHTS RESERVED.]

*Letts's Diaries can be obtained at all the principal Booksellers throughout the World.*

For a Full Description whereby to obtain a Counterpart of this Diary, see back of Order Form.

*Hasell Watson & Viney, Ltd., Printers, London & Aylesbury*



# CALENDAR FOR 1898.

JANUARY, 1898.			FEBRUARY, 1898.			MARCH, 1898.		
FIRST MONTH—THIRTY-ONE DAYS.			SECOND MONTH—TWENTY-EIGHT DAYS.			THIRD MONTH—THIRTY-ONE DAYS.		
Days of the M. W. Y.	Sundays, Holidays, Phases of the Moon, &c.	High Water at Sydney A.M. P.M.	Days of the M. W. Y.	Sundays, Holidays, Phases of the Moon, &c.	High Water at Sydney A.M. P.M.	Days of the M. W. Y.	Sundays, Holidays, Phases of the Moon, &c.	High Water at Sydney A.M. P.M.
1 S.	1 New Year's Day. Circumcision	2 15 2 39	1 Tu.	32 Foundation Day, Nelson (N.Z.)	3 0 3 35	1 Tu.	60 St. David	1 23 1 47
2 S.	2 after Christmas	3 8 3 37	2 W.	33 Purification V. Mary	4 20 5 5	2 W.	61 Ember Day	2 15 2 50
3 M.		4 13 4 49	3 Th.	34 Sun R. 5h 37m s. 7h 30m	5 46 6 25	3 Th.	62 Sun R. 6h 8m s. 6h 56m	3 30 4 16
4 Tu.		5 26 5 58	4 F.	35	6 59 7 26	4 F.	63 Ember Day	5 6 5 49
5 W.		6 33 7 2	5 S.	36	7 49 8 10	5 S.	64 Ember Day	6 28 7 0
6 Th.	Epiphany. Sun R. 5h 9m s. 7h 44m	7 29 7 51	6 S.	37 Septuagesima Sun.	8 30 8 49	6 S.	65 2 in Lent	7 26 7 47
7 F.		8 13 8 32	7 M.	38 O 4h 24m A.M.	9 7 9 20	7 M.	66	8 5 8 24
8 S.	O 10h 24m A.M.	8 52 9 9	8 Tu.	39 Half Quarter Day	9 36 9 52	8 Tu.	67 O 7h 29m P.M.	8 40 8 56
9 S.	1 after Epiphany	9 27 9 42	9 W.	40	10 10 10 25	9 W.	68 Sun R. 6h 15m s. 6h 46m	9 11 9 27
10 M.		10 2 10 19	10 Th.	41 Sun R. 5h 45m s. 7h 23m	10 41 11 0	10 Th.	69	9 43 9 59
11 Tu.		10 37 10 54	11 F.	42	11 17 11 34	11 F.	70	10 15 10 33
12 W.		11 11 11 26	12 S.	43	11 52 —	12 S.	71	10 50 11 8
13 Th.	Sun R. 5h 15m s. 7h 42m	11 45 —	13 S.	44 Sexagesima Sunday	0 10 0 28	13 S.	72 3 in Lent	11 27 11 48
14 F.		0 1 0 19	14 M.	45 St. Valentine. C 10h 35m A.M.	0 51 1 14	14 M.	73 C 5h 48m P.M.	— 0 7
15 S.		0 40 1 1	15 Tu.	46	1 40 2 9	15 Tu.	74	0 29 0 55
16 S.	2 after Epiphany. C 1h 45m A.M.	1 23 1 45	16 W.	47	2 44 3 24	16 W.	75	1 23 1 55
17 M.		2 11 2 40	17 Th.	48 Sun R. 5h 53m s. 7h 15m	4 13 5 4	17 Th.	76 St. Patrick. Holiday, O'land & N.Z. Sun R. 6h 22m s. 6h 36m	2 34 3 19
18 Tu.		3 13 3 51	18 F.	49	5 51 6 35	18 F.	77	4 9 4 58
19 W.		4 35 5 18	19 S.	50	7 13 7 43	19 S.	78	5 43 6 25
20 Th.	Sun R. 5h 22m s. 7h 40m	6 0 6 42	20 S.	51 Quinquagesima Sun.	8 8 8 34	20 S.	79 4 in Lent. Autumn com- mences 2h P.M.	6 58 7 24
21 F.	(N.Z.). C 5h 25m P.M.	7 16 7 47	21 M.	52 C 5h 41m A.M.	8 55 9 14	21 M.	80	7 49 8 11
22 S.	Anniversary D., Wellington	8 16 8 43	22 Tu.	53 Shrove Tuesday	9 36 9 54	22 Tu.	81 C 6h 37m P.M.	8 31 8 50
23 S.	3 after Epiphany	9 5 9 28	23 W.	54 Ash Wednesday. Lent begins	10 12 10 30	23 W.	82 Anniversary D., Otago (N.Z.)	9 8 9 27
24 M.	Ramadan (Turk. Lent) begins	9 50 10 13	24 Th.	55 St. Matthias, Ap. Sun R. 6h 11m s. 7h 6m	10 50 11 6	24 Th.	83 Annunciation V. Mary. Quarter Day	9 44 10 0
25 Tu.	Conversion of St. Paul	10 31 10 53	25 F.	56	11 23 11 39	25 F.	84	10 17 10 35
26 W.	Foundation of Australia	11 12 11 26	26 S.	57	11 53 —	26 S.	85	10 51 11 8
27 Th.	Sun R. 5h 30m s. 7h 36m	11 50 —	27 S.	58 1 in Lent. Ember Week	0 8 0 25	27 S.	86 5 in Lent	11 23 11 39
28 F.	(N.Z.). C 6h 02m A.M.	0 6 0 23	28 M.	59 O 9h 13m P.M.	0 44 1 2	28 M.	87	11 54 —
29 S.	Anniversary Day, Auckland	0 40 1 0				29 Tu.	88	0 12 0 32
30 S.	4 after Epiphany. C 10h 33m A.M.	1 19 1 41				30 W.	89 O 5.40 P.M. [S. R. 6.34 s. 6.15	0 52 1 15
31 M.		2 4 2 30				31 Th.	90 Anniversary Day, Taranaki.	1 42 2 15

APRIL, 1898.			MAY, 1898.			JUNE, 1898.		
FOURTH MONTH—THIRTY DAYS.			FIFTH MONTH—THIRTY-ONE DAYS.			SIXTH MONTH—THIRTY DAYS.		
Days of the M. W. Y.	Sundays, Holidays, Phases of the Moon, &c.	High Water at Sydney A.M. P.M.	Days of the M. W. Y.	Sundays, Holidays, Phases of the Moon, &c.	High Water at Sydney A.M. P.M.	Days of the M. W. Y.	Sundays, Holidays, Phases of the Moon, &c.	High Water at Sydney A.M. P.M.
1 F.		2 51 3 32	1 S.	121 3 after Easter. SS. Philip & James, App.	3 27 4 7	1 W.	152 Foundation Day, West Aust. [Ember Day	4 45 5 17
2 S.		4 21 5 5	2 M.	122	4 47 5 17	2 Th.	153 Sun R. 7h 29m s. 5h 7m	5 47 6 17
3 S.	93 Palm Sunday	5 42 6 13	3 Tu.	123	5 45 6 13	3 F.	154 Ember Day	6 47 7 13
4 M.		6 43 7 8	4 W.	124	6 38 7 0	4 S.	155 Ember Day	7 39 8 6
5 Tu.		7 27 7 45	5 Th.	125	7 20 7 42	5 S.	156 Trinity Sunday.	8 31 8 55
6 W.		8 3 8 20	6 F.	126	8 4 8 25	6 M.	157	9 20 9 45
7 Th.	Sun R. 6h 40m s. 6h 5m.	8 39 8 56	7 S.	127	8 46 9 8	7 Tu.	158	10 11 10 36
8 F.	Good Friday	9 13 9 32	8 S.	128 4 after Easter	9 32 9 55	8 W.	159	11 3 11 27
9 S.	Easter Eve	9 52 10 12	9 M.	129 Half Quarter Day	10 18 10 43	9 Th.	160 Corpus Christi. Sun R. 7h 33m [S. 5h 5m	11 53 —
10 S.	100 Easter Day	10 33 10 55	10 Tu.	130	11 9 11 35	10 F.	161	0 18 0 46
11 M.	101 Easter Monday	11 18 11 39	11 W.	131	11 59 —	11 S.	162 St. Barnabas, Ap. C 4h 4m P.M.	1 11 1 36
12 Tu.	102 Easter Tuesday	— 0 2	12 Th.	132 Sun R. 7h 12m s. 5h 21m	0 28 0 57	12 S.	163 1 after Trinity	2 3 2 31
13 W.		0 29 0 56	13 F.	133 C 7h 36m A.M.	1 27 2 0	13 M.	164	2 39 3 30
14 Th.	Sun R. 6h 47m s. 5h 55m.	1 27 2 0	14 S.	134	2 33 3 8	14 Tu.	165	4 3 4 35
15 F.	C 10h 28m A.M.	2 40 3 23	15 S.	135 Rogation Sunday	3 47 4 22	15 W.	166	5 9 5 41
16 S.		4 6 4 50	16 M.	136 Rogation Day	4 52 5 25	16 Th.	167 Sun R. 7h 35m s. 5h 6m	6 11 6 42
17 S.	107 1 after Eas. Low Sunday	5 27 6 1	17 Tu.	137 Rogation Day	5 57 6 25	17 F.	168	7 10 7 34
18 M.		6 31 6 57	18 W.	138 Rogation Day	6 50 7 14	18 S.	169	7 57 8 18
19 Tu.		7 19 7 39	19 Th.	139 Ascension D. Sun R. 7.18 s. 5.15	7 34 7 56	19 S.	170 2 after Trin. C 2h 19m P.M.	8 39 8 58
20 W.		8 0 8 21	20 F.	140 C 10h 58m P.M.	8 16 8 36	20 M.	171 Queen's Accession, 1837	9 16 9 32
21 Th.	111 Hol. Com. 8 hrs. Vic. Sun R. 6h 53m s. 5h 45m. C 8h 21m A.M.	8 39 8 56	21 S.	141	8 53 9 10	21 Tu.	172 Proclamation. Hol. S. Aust. [Winter commences 10h A.M.	9 50 10 7
22 F.		9 14 9 32	22 S.	142 after Ascension. [Mohammedan Year 1316 begins	9 28 9 46	22 W.	173	10 25 10 42
23 S.	113 St. George. Holiday Queens- land & N.Z.	9 48 10 5	23 M.	143	10 37 10 55	23 Th.	174 Sun R. 7h 37m s. 5h 7m	10 59 11 16
24 S.		10 24 10 40	24 W.	144	11 10 11 29	24 F.	175 St. John, Baptist. Quarter Day	11 33 11 50
25 M.	114 2 after Easter	10 56 11 12	25 Th.	145	11 47 —	25 S.	176	— 0 7
26 Tu.	115 St. Mark, Evangelist	11 32 11 50	26 F.	146	0 7 0 28	26 S.	177 3 after Trinity	0 27 0 47
27 W.		— 0 8	27 S.	147	0 53 1 16	27 M.	178 C 2h 54m P.M.	1 9 1 32
28 Th.	116 Sun R. 6h 59m s. 5h 36m	0 29 0 52	28 M.	148	—	28 Tu.	179 Coronation Day. Hol. W.	1 57 2 25
29 F.	O 10h 5m P.M.	1 17 1 44	29 S.	149 Whit Sun. Ember Week.	1 42 2 10	29 W.	180 St. Peter, Ap	2 53 3 23
30 S.		2 15 2 50	30 M.	150 Whitsun Mon. C 3h 14m A.M.	2 40 3 10	30 Th.	181 Sun R. 7h 38m s. 5h 9m	3 55 4 29
31 M.			31 Tu.	151 Whitsun Tuesday	3 40 4 11			

The Time Standards used are:—(1) For Eclipses and Seasons, Greenwich Time; (2) For Sun at Melbourne, Moon's Transit and Phases, and Sydney Tides, 10 hours East.

# CALENDAR FOR 1898.

JULY, 1898.			AUGUST, 1898.			SEPTEMBER, 1898.		
SEVENTH MONTH—THIRTY-ONE DAYS.			EIGHTH MONTH—THIRTY-ONE DAYS.			NINTH MONTH—THIRTY DAYS.		
Days of the M. W. Y.	Sundays, Holidays, Phases of the Moon, &c.	High Water at Sydney A.M. P.M.	Days of the M. W. Y.	Sundays, Holidays, Phases of the Moon, &c.	High Water at Sydney A.M. P.M.	Days of the M. W. Y.	Sundays, Holidays, Phases of the Moon, &c.	High Water at Sydney A.M. P.M.
1 F.	182 Separation Day, Victoria	5 4 5 40	1 M.	213 Bank Hol. (N.S.W. & Q'land)	7 15 7 43	1 Th.	244 Hol. Com. 8 hrs. S. Australia	8 43 9 3
2 S.	183	6 16 6 49	2 Tu.	214 O 2h 29m P.M.	8 11 8 37	2 F.	245 [Sun R. 6h 43m s. 5h 57m	9 22 9 42
3 S.	184 4 after Trinity	7 20 7 48	3 W.	215 Sun R. 7h 18m s. 5h 33m	9 0 9 24	3 S.	246	10 3 10 21
4 M.	185 O 7h 12m A.M. Dec. American Independence	8 18 8 45	4 Th.	216	9 45 10 9	4 S.	247 13 after Trinity	10 41 11 0
5 Tu.	186	9 10 9 37	5 F.	217	10 29 10 51	5 M.	248	11 18 11 35
6 W.	187	10 1 10 25	6 S.	218	11 10 11 29	6 Tu.	249	11 53 —
7 Th.	188 Sun R. 7h 37m s. 5h 13m	10 49 11 14	7 W.	219 9 after Trinity	11 48 —	7 W.	250	0 10 0 30
8 F.	189	11 37 —	8 M.	220 C 4h 13 P.M.	0 7 0 27	8 Th.	251 Sun R. 6h 33m s. 6h 3m.	0 50 1 13
9 S.	190	0 1 0 23	9 Tu.	221	1 28 1 52	9 F.	252 [C 8h 51m A.M.	1 37 2 7
10 S.	191	0 44 1 6	10 W.	222	2 18 2 49	10 S.	253	2 41 3 23
11 M.	192 C 2h 43m A.M.	1 28 1 51	11 Th.	223 Half Quarter Day. Sun R. 7h 11m s. 5h 39m	3 25 4 6	11 S.	254 14 after Trinity	4 11 4 57
12 Tu.	193	2 15 2 41	12 F.	224	4 51 5 33	12 M.	255	5 38 6 14
13 W.	194	3 9 3 40	13 S.	225	6 13 6 48	13 Tu.	256	6 46 7 9
14 Th.	195 Sun R. 7h 34m s. 5h 17m	4 16 4 54	14 W.	226 10 after Trinity	7 16 7 39	14 W.	257	7 31 7 49
15 F.	196 St. Swithun	5 32 6 7	15 M.	227	8 8 8 18	15 Th.	258 Sun R. 6h 22m s. 6h 9m	8 8 8 26
16 S.	197	6 39 7 9	16 Tu.	228	9 9 9 25	16 F.	259 C 10h 10m A.M.	8 42 8 56
17 S.	198 6 after Trinity	7 32 7 55	17 W.	229	10 9 10 29	17 S.	260 Jewish Year 5659 commences	9 11 9 27
18 M.	199	8 17 8 38	18 Th.	230	11 11 11 46	18 S.	261 15 aft. Trin. Ember Week	9 41 9 59
19 Tu.	200 C 5h 47m A.M.	8 56 9 13	19 F.	231	12 1 12 8	19 M.	262	10 15 10 32
20 W.	201	9 31 9 48	20 S.	232	12 12 12 29	20 Tu.	263	10 50 11 8
21 Th.	202 Sun R. 7h 30m s. 5h 22m	10 3 10 19	21 W.	233 11 after Trinity	11 46 11 1	21 W.	264 St. Matthew, Ap. Ember Day	11 26 11 46
22 F.	203	10 35 10 53	22 M.	234	12 17 12 32	22 Th.	265 Sun R. 6h 11m s. 6h 15m	— 0 6
23 S.	204	11 11 11 28	23 Tu.	235	11 50 —	23 F.	266 Spring com. 1h A.M. Ember Day	0 31 0 59
24 S.	205 7 after Trinity	11 45 —	24 W.	236	0 9 0 29	24 S.	267	1 29 2 2
25 M.	206 St. James, Ap.	0 3 0 21	25 Th.	237 St. Bartholomew, Ap.	0 52 1 17	25 S.	268 16 aft. Trinity	2 44 3 30
26 Tu.	207 C 11h 40m P.M.	0 40 1 1	26 F.	238	1 46 2 17	26 M.	269	4 20 5 6
27 W.	208	1 22 1 47	27 S.	239	2 53 3 36	27 Tu.	270	5 46 6 21
28 Th.	209 Sun R. 7h 25m s. 5h 27m	2 14 2 44	28 S.	240 12 after Trinity	4 25 5 12	28 W.	271	6 51 7 15
29 F.	210	3 16 3 54	29 M.	241	5 56 6 36	29 Th.	272 St. Michael & All Angels.	7 39 8 2
30 S.	211	4 37 5 20	30 Tu.	242	7 6 7 32	30 F.	273	8 22 8 42
31 S.	212 8 after Trinity	6 3 6 41	31 W.	243	7 58 8 21			

OCTOBER, 1898.			NOVEMBER, 1898.			DECEMBER, 1898.		
TENTH MONTH—THIRTY-ONE DAYS.			ELEVENTH MONTH—THIRTY DAYS.			TWELFTH MONTH—THIRTY-ONE DAYS.		
Days of the M. W. Y.	Sundays, Holidays, Phases of the Moon, &c.	High Water at Sydney A.M. P.M.	Days of the M. W. Y.	Sundays, Holidays, Phases of the Moon, &c.	High Water at Sydney A.M. P.M.	Days of the M. W. Y.	Sundays, Holidays, Phases of the Moon, &c.	High Water at Sydney A.M. P.M.
1 S.	274	8 58 9 17	1 Tu.	305 All Saints'. Cup Day, Mel. [Hol. Hks. Bay, & Marl. (N.Z.)	9 50 10 8	1 Th.	335 Sun R. 4h 54m s. 7h 25m	10 8 10 26
2 S.	275	9 37 9 56	2 W.	306	10 26 10 42	2 F.	336	10 44 11 1
3 M.	276	10 13 10 31	3 Th.	307 Sun R. 5h 13m s. 6h 55m	10 59 11 17	3 S.	337	11 18 11 38
4 Tu.	277	10 51 11 7	4 F.	308	11 35 11 53	4 S.	338 2 in Advent	11 55 —
5 W.	278	11 25 11 42	5 S.	309	— 0 14	5 M.	339	0 15 0 37
6 Th.	279 Sun R. 5h 51m s. 6h 28m	11 59 —	6 S.	310 22 after Trinity	0 36 1 0	6 Tu.	340 ( 8h 6m P.M.	0 59 1 23
7 F.	280	0 20 0 42	7 M.	311 ( oh 28m A.M.	1 28 1 58	7 W.	341	1 49 2 14
8 S.	281 ( 4h 5m A.M.	1 6 1 34	8 Tu.	312 P. of Wales' birthday (1841)	2 31 3 7	8 Th.	342 Sun R. 4h 53m s. 7h 31m	2 43 3 14
9 S.	282 18 after Trinity	2 5 2 43	9 W.	313	3 46 4 23	9 F.	343	3 48 4 22
10 M.	283	3 24 4 11	10 Th.	314 Sun R. 5h 6m s. 7h 2m	4 57 5 28	10 S.	344 Separation D. (Queensland)	4 53 5 24
11 Tu.	284	4 52 5 28	11 F.	315 Half Quarter Day	5 55 6 22	11 S.	345 3 in Advent. Ember Wk.	5 55 6 25
12 W.	285	5 57 6 25	12 S.	316	6 44 7 6	12 M.	346	6 52 7 16
13 Th.	286 Sun R. 5h 41m s. 6h 34m	6 49 7 9	13 S.	317 23 after Trinity	7 26 7 48	13 Tu.	347 ● 9h 43m P.M.	7 42 8 8
14 F.	287	7 27 7 45	14 M.	318 ● 1oh 21m A.M.	8 5 8 29	14 W.	348 Ember Day	8 32 8 56
15 S.	288 ● 1oh 37m P.M.	8 3 8 22	15 Tu.	319	8 51 9 12	15 Th.	349 Sun R. 4h 55m s. 7h 36m	9 20 9 45
16 S.	289 19 after Trinity	8 38 8 55	16 W.	320	9 35 9 58	16 F.	350 Em. Day [Canterbury (N.Z.)	10 9 10 33
17 M.	290	9 11 9 30	17 Th.	321 Sun R. 5h 0m s. 7h 10m	10 22 10 46	17 S.	351 Em. Day. Anniversary Day	10 59 11 23
18 Tu.	291 St. Luke, Evan.	9 49 10 8	18 F.	322	11 9 11 35	18 S.	352 4 in Advent	11 48 —
19 W.	292	10 28 10 51	19 S.	323	11 59 —	19 M.	353	0 13 0 39
20 Th.	293 Sun R. 5h 31m s. 6h 40m	11 12 11 35	20 S.	324 24 after Trinity	0 26 0 54	20 Tu.	354	1 5 1 31
21 F.	294 Proclamation D. (W. Aust.)	11 58 —	21 M.	325 ) 3h 5m A.M.	1 26 1 56	21 W.	355 Summer commences 7h P.M.	1 58 2 25
22 S.	295 ) 7h 5m P.M.	0 24 0 55	22 Tu.	326	2 29 3 4	22 Th.	356 Sun R. 4h 58m s. 7h 40m	2 55 3 27
23 S.	296 20 after Trinity	1 27 2 4	23 W.	327 Proclamation D. (Victoria)	3 41 4 17	23 F.	357	4 3 4 38
24 M.	297	2 45 3 27	24 Th.	328 Sun R. 4h 56m s. 7h 18m	4 53 5 26	24 S.	358	5 14 5 47
25 Tu.	298	4 14 4 53	25 F.	329	5 56 6 24	25 S.	359 Christmas Day. Quarter Day	6 21 6 51
26 W.	299	5 30 6 2	26 S.	330	6 50 7 14	26 M.	360 Boxing Day. St. Stephen, M.	7 18 7 42
27 Th.	300 Sun R. 5h 21m s. 6h 47m	6 30 6 57	27 S.	331 1 in Advent	7 36 7 59	27 Tu.	361 St. John, Ap.	8 4 8 26
28 F.	301 SS. Simon & Jude, App.	7 23 7 42	28 M.	332 O 2h 39m P.M.	8 19 8 38	28 W.	362 Anniv. D. S. Aust. Inno. Day.	8 47 9 4
29 S.	302 O 1oh 18m P.M.	8 2 8 21	29 Tu.	333 [Queensland	8 57 9 14	29 Th.	363 Sun R. 5.2S. 7.42. [O 9.39 A.M.	9 21 9 38
30 S.	303 21 after Trinity	8 40 8 58	30 W.	334 St. Andrew. Ad. Hol. N.Z. &	9 32 9 49	30 F.	364	9 56 10 13
31 M.	304	0 15 0 31	31 S.	335	— —	31 S.	365	10 31 10 48



## GENERAL INFORMATION, &c.

### EXPLANATION OF CALENDAR.

Moon's Changes:—● New Moon; ☾ First Quarter; ○ Full Moon; ☾ Last Quarter.

### CHRONOLOGICAL NOTES.

Golden Number 18 | Domin. Letter B  
Epact ... 7 | Rom. Indiction 11  
Solar Cycle ... 3 | Julian Period 6611

### ECLIPSES IN 1898.

Of the SUN, Three; of the MOON, Three.  
I. JANUARY 7-8. Partial Eclipse of the Moon. Visible generally in the East of North America, in South America, Europe, Asia and Africa. Moon enters shadow, 7th day, 11h 47m p.m. Middle of Eclipse, 8th day, 0h 35m a.m. Moon leaves shadow, 1h 23m a.m.

II. JANUARY 22. Total Eclipse of the Sun. Visible as a partial Eclipse in Eastern Europe, in Asia, and Africa, except the extreme West and South portions. The line of total Eclipse begins about 300 miles South-West of Lake Chad, passes over Gondokoro to the North of Magadoda, thence over the Indian Ocean to Rutnagherry, traversing India and China to a point about 600 miles North-East of Pekin. Eclipse begins at 4h 46m a.m., in Longitude 22° East, Latitude 0°. Central Eclipse begins at 5h 49m a.m., in Longitude 10° East, Latitude 11° North, and ends at 8h 50m a.m., in Longitude 119° East, Latitude 46° North. Eclipse ends at 9h 53m a.m., in Longitude 110° East, Latitude 36° North.

III. JULY 3. Partial Eclipse of the Moon. Visible generally in Europe, Asia, and Africa. Moon enters shadow, 7h 46m p.m. Middle of Eclipse, 9h 17m p.m. Moon leaves shadow, 10h 49m p.m.

IV. JULY 18. Annular Eclipse of the Sun. Visible as annular in the South Pacific only. Partial Eclipse visible in North Island of New Zealand, and South of South America. Eclipse begins 5h 2m p.m. Central Eclipse begins 6h 36m p.m., and ends at 8h 37m p.m. Eclipse ends 10h 11m p.m.

V. DECEMBER 13. Partial Eclipse of the Sun. Visible only in the Antarctic.

VI. DECEMBER 27-28. Total Eclipse of the Moon. Visible in America, Europe, Asia and Africa. Moon enters shadow, 27th day, 9h 47m p.m. Total Eclipse begins 10h 57m p.m., ends 28th day, 0h 26m a.m. Moon leaves shadow, 1h 36m a.m.

### GENERAL PUBLIC HOLIDAYS.

As kept in (1) NEW SOUTH WALES, (2) VICTORIA, (3) SOUTH AUSTRALIA, (4) WEST AUSTRALIA, (5) QUEENSLAND, (6) TASMANIA, (7) N. ZEALAND.  
\* The numbers indicate the Colonies in which each day is kept.

Jan. 1 N. Year's Day	1	2	3	4	5	6	7
" 26 Foundation of Australia...	1	2	3	4	...	6	...
Apr. 8 Good Friday	1	2	3	4	5	6	7
" 9 Easter Eve	...	2	3	...	5	6	7
" 11 Easter Mon...	1	2	3	4	5	6	7
May 24 Queen's Bthd.	1	2	3	4	5	6	7
" 30 Whit Monday	...	2	...	...	...	...	7
Nov. 9 Pr. W. Bthd.	1	2	3	4	5	6	7
Dec. 25 Christ. Day...	1	2	3	4	5	6	7
" 26 Boxing Day	1	2	3	4	5	6	7

### ADDITIONAL HOLIDAYS.

New South Wales.—Bank Holiday, Aug. 1; Commemorate 8 hours, Oct. 3.

Tasmania.—At Hobart, Regatta Day; Races at Elwick (Cup Day); S. T. A. and P. Society's Show Day; at Launceston, Regatta Day; Races at Moubay (Cup Day); Longford, Show Day.

Victoria.—Easter Tuesday, April 12; Separation Day, July 1; Cup Day, Melbourne, Nov. 1; Proclamation, Nov. 23.

South Australia.—Queen's Accession\*, June 20; 8 hours Celebration, Sept. 1; Proclamation Day, Dec. 28.

Western Australia.—Foundation Day, June 1; Coronation Day, June 28; Proclamation Day, Oct. 21.

Queensland.—March 17; April 23; Aug. 1; Nov. 30; Dec. 10.

New Zealand.—St. Patrick's Day, March 17; St. George's Day, April 23; St. Andrew's Day, Nov. 30.

\* When the Queen's Birthday or Accession, or Prince of Wales' Birthday fall on any day but Monday, the Holiday is kept on the following Monday.

### SPECIAL PUBLIC HOLIDAYS.

As kept separately in each Colony, will be found specified in the calendar.

Holidays falling on Sunday are kept on Monday.

### SEASONS, 1898.

(SOUTHERN HEMISPHERE.)

Autumn commences ... Mar. 20, 2h p.m.  
Winter " ... June 21, 10h a.m.  
Spring " ... Sept. 23, 1h a.m.  
Summer " ... Dec. 21, 7h p.m.

### QUEEN & THE ROYAL FAMILY.

Date of Birth and Age in 1898.

Queen Victoria ... May 24, 1819—79  
Prince Consort ... Aug. 26, 1819

(Died December 14th, 1861.)  
Princess Royal ... Nov. 21, 1840—58

(Married January 25, 1858, to Crown Prince Frederick William of Prussia) 8 children.  
Prince of Wales ... Nov. 9, 1841—57

(Married March 10, 1863, to Alexandra Princess of Denmark, born December 1, 1844.) Issue—  
Albert Victor Christian Edward, Jan. 8, 1864

(Died January 14, 1892.)  
George Frederick Ernest Albert (Duke of York) ... June 3, 1865—33

(Married July 6, 1893, to Princess Victoria Mary (May), 3 children.  
Louise Vic. Alexandra Dagmar, Feb. 20, 1867—31

(Married July 27, 1889, to Duke of Fife) 2 children.  
Victoria Alexandra Olga Mary, July 6, 1868—30

Maud Charlotte Mary Victoria, Nov. 26, 1869—29  
(Married July 22, 1896, to Prince Charles of Denmark.)

Prs. Alice Maud Mary, April 25, 1843  
(Married July 1, 1862, to Prince Louis of Hesse, died December 14, 1878) 7 children.

Prince Alfred Ernest Albert, Duke of Edinburgh (Duke of Saxe-Coburg-Gotha, 1893) ... Aug. 6, 1844—54

(Married January 23, 1874, to Grand Duchess Marie Alexandrovna of Russia) 5 children.  
Prs. Helena Aug. Vict., May 25, 1846—52

(Married July 5, 1866, to Prince Christian of Schleswig-Holstein) 5 children.  
Prs. Lou. Caroline Alb., March 18, 1848—50

(Married March 21, 1871, to John, Marquis of Lorne.)  
Prince Arthur William Patrick Albert (Duke of Connaught) ... May 1, 1850—48

(Married March 13, 1879, to Princess Louise of Prussia) 3 children.

### THE ROYAL FAMILY—contd.

Prince Leopold George Duncan Albert (Duke of Albany) ... April 7, 1853

(Married April 27, 1882, to Princess Helen of Waldeck-Pyrmont, died March 28, 1884) 2 children.  
Princess Beatrice M. Victoria Feodore

April 14, 1857—41  
(Married July 23, 1885, to Prince Henry of Battenberg) 4 children.

Duke of Cumberland ... Sept. 21, 1845—53  
Duke of Cambridge ... Mar. 26, 1819—79

Duch. of Mecklenburgh July 12, 1822—76  
Duchess of Teck ... Nov. 27, 1833—65

AUSTRALASIAN GOVERNORS.  
BRITISH NEW GUINEA.—Sir William MacGregor, M.D., K.C.M.G. (£1,500).

Fiji Islands and Western Pacific.—Sir G. T. Michael O'Brien, K.C.M.G. (£2,500).

NEW SOUTH WALES.—The Rt. Hon. Viscount Hampden (£7,000).

NEW ZEALAND.—The Rt. Hon. Earl of Ranfurly (£5,000).

QUEENSLAND.—The Rt. Hon. Lord Lamington, K.C.M.G. (£5,000).

SOUTH AUSTRALIA.—Sir Thomas Fowell Buxton, Bart., K.C.M.G. (£4,000).

TASMANIA.—The Rt. Hon. Viscount Gormanston, K.C.M.G. (£3,500).

VICTORIA.—The Rt. Hon. Lord Brassey, K.C.B. (£7,000).

WESTERN AUSTRALIA.—Lieut.-Col. Sir Gerard Smith, K.C.M.G. (£4,000).

JEWISH CALENDAR, 1898.

The Year 5658 commenced Sept. 27th, 1897.

1898. 5658.

Jan. 4 Fast, Siege of Jerusalem ... Tebet 10

" 24 ... Sebat 1

Feb. 23 ... Adar 1

Mar. 7 Fast of Esther ... 13

" 8 Purim ... 14

" 9 Shushan Purim ... 15

" 24 ... Nisan 1

April 7 Fest. of Passover ... 15

" 8 " 2nd day ... 16

" 13 " 7th " ... 21

" 14 " 8th " ... 22

" 23 ... Yiar 1

May 10 Fest. 33rd of Omer ... 18

" 22 ... Sivan 1

" 27 Pentecost, 1st Day ... 6

" 28 " 2nd " ... 7

June 21 ... Tamuz 1

July 7 Fast of Tamuz ... 17

" 20 ... Ab 1

" 28 Fast of Ab ... 9

Aug. 19 ... Elul 1

Sept. 17 New Year 5659 ... Tisri 1

" 18 " 2nd Day ... 2

" 19 Fast of Guedaliah ... 3

### NEW SOUTH WALES CUSTOMS DUTIES.

#### PERMANENT TARIFF.

Spirits—On all kinds of spirits and s. d.  
spirituous compounds, imported, and not otherwise enumerated, per proof gallon 14 0

No allowance beyond 16·5 shall be made for the underproof of any spirit of a less strength than 16·5 under pf.

Case Spirits—Contents of two, three, four, or five gallons shall be charged—

Two gallons and under as two gallons.

Over two gallons and not exceeding three as three gals.

Over three gallons and not exceeding four as four gallons.

Over four gallons and not exceeding five as five gallons.

Bitters, essences, fluid extracts, sarsaparilla, tinctures, medicines, infusions, and toilet preparations containing—

Not more than 25 per cent. of proof spirit, per gallon ... 3 6

Not more than 50 per cent. of proof spirit, per gallon ... 7 0

Not more than 75 per cent. of proof spirit, per gallon ... 10 6

If containing more than 75 per cent. of proof spirit, per gal. 14 0

If containing spirit overproof to be charged as spirituous compounds, per proof gallon 14 0

Methylated spirit, per gallon ... 0 1

Perfumed spirits, perfumed waters, Florida water, and bay rum, per liquid gallon ... 20 0

Wines—Sparkling—For six reputed quarts, or twelve reputed pints ... 10 0

Other kinds, per gallon ... 5 0

Other kinds—For six reputed quarts, or twelve reputed pints ... 5 0

Beer, ale, porter, spruce, or other beer, cider and perry—

In wood or jar, per gallon ... 0 6

In bottle, per gallon ... 0 9

For six reputed quarts, or twelve reputed pints, per gallon ... 0 9

Tobacco—Delivered from ship's side or from a Customs Bond for home consumption, manufactured, unmanufactured, and snuff, per lb. ... 3 0

Unmanufactured, entered to be manufactured in the Colony. At the time of removal from a Customs Bond or from an importing ship to any licensed tobacco manufactory for manufacturing purposes only into tobacco, cigars and cigarettes, per lb. 1 0

Sheepwash, per lb. ... 0 3

Cigars and Cigarettes (including wrappers in latter case), per lb. ... 6 0

Opium and any preparation thereof, per lb. ... 20 0

### NEW SOUTH WALES CUSTOMS DUTIES—contd.

#### DIMINISHING DUTIES.

Candles, per lb., or reputed package of that weight, and so in proportion for any such reputed weight, night lights, and stearine, per lb. 0 0½

From 1st July, 1899 ... Free

Oil, kerosine, naphtha, and gasoline, per gallon ... 0 6

From 1st July, 1897, per gallon Free

Oils, except linseed oil (raw or boiled), fish and seal oils, black whale, cocoanut, sperm, palm and essential oils, per gallon ... 0 6

From 1st July, 1897, per gallon Free

Sugar—Refined ... s. d.

Sugar—Raw and Solid Glucose ... s. d.

Molasses and Treacle—Glucose, Liquid and Syrup ... s. d.

From 1st July, 1897, ... 0 1

From 1st July, 1898, ... 0 0½

From 1st July, 1899, ... 0 1

From 1st July, 1900, ... Free

From 1st July, 1901, ... Free

Biscuits, per lb. ... 0 1

From 1st July, 1898, per lb. ... 0 0½

From 1st July, 1900 ... Free

Confectionery (including cakes, comfits, liquorice, liquorice paste, lozenges of all kinds, cocoanut in sugar, sugar-candy, succades, and sweat-meats), per lb. ... 0 2

From 1st July, 1898, per lb. ... 0 1

From 1st July, 1900 ... Free

Fruits—Dried, candied and prunes (exclusive of dates), per lb. ... 0 2

From 1st July, 1898, per lb. ... 0 1

From 1st July, 1900 ... Free

Jams and Jellies—per lb. or reputed package of that weight, and so in proportion for any such reputed weight, per lb. ... 0 1

From 1st July, 1898, per lb. ... 0 0½

From 1st July, 1900 ... Free

Preserves and canned fruits, fruits boiled, peel, drained or dry, per lb. ... 0 1

From 1st July, 1898, per lb. ... 0 0½

From 1st July, 1900 ... Free

### TIDAL CONSTANTS.

Corrections applicable to Sydney to obtain Standard or Zone Time of High Water at the undermentioned places:—

Aelaide	...	subtract	3h 22m
Brisbane	...	add	2h 16m
Hobart	...	subtract	0h 7m
Launceston	...	add	5h 39m
Melbourne	...	subtract	5h 25m
Newcastle	...	add	0h 9m
Port Pirie	...	subtract	1h 30m
Rockhampton	...	add	3h 24m
Thursday Island	...	add	4h 34m

### HER MAJESTY'S MINISTERS.

Prime Minister and Foreign Secretary, Rt. Hon. the Marquess of Salisbury, K.G.

Lord President of the Council, Rt. Hon. the Duke of Devonshire, K.G.

Lord High Chancellor, Rt. Hon. Lord Halsbury.

Lord Privy Seal, Rt. Hon. Viscount Cross, G.C.B.

Chancellor of the Duchy of Lancaster, Rt. Hon. Lord James.

Chancellor of the Exchequer, Rt. Hon. Sir Michael Hicks Beach.

Secretary of State for the Home Department, Rt. Hon. Sir Matthew White Ridley.

Secretary of State for the Colonies, Rt. Hon. J. Chamberlain.

Secretary of State for War, Rt. Hon. the Marquess of Lansdowne.

Secretary of State for India, Rt. Hon. Lord George Hamilton.

First Lord of the Admiralty, Rt. Hon. G. J. Goschen.

First Lord of the Treasury, Rt. Hon. A. J. Balfour.

President of the Board of Trade, Rt. Hon. C. T. Ritchie.

President of the Local Government Board, Rt. Hon. Henry Chaplin.

Lord Lieutenant of Ireland, Rt. Hon. Earl Cadogan, K.G.

Lord Chancellor of Ireland, Rt. Hon. Lord Ashbourne.

Secretary for Scotland, Rt. Hon. Lord Balfour of Burleigh.

First Commissioner of Works, Rt. Hon. A. Akers-Douglas.

President of Board of Agriculture, Rt. Hon. Walter Long.

The above form the Cabinet.

Chief Secretary for Ireland, Rt. Hon. Gerald Balfour.

Postmaster-General, The Duke of Norfolk, K.G.

Vice-President of the Council, Rt. Hon. Sir J. Gorst.

Attorney-General, Sir Richard Webster, G.C.M.G.

Solicitor-General, Sir R. B. Finlay.

Master of the Horse, The Duke of Portland.

Comptroller of the Household, Rt. Hon. Lord Arthur Hill.

Financial Secretary to the Treasury, Rt. Hon. R. W. Hanbury.

Under-Secretary for Foreign Affairs, Rt. Hon. G. Curzon.

Under-Secretary for War, Rt. Hon. W. St. John Brodrick.

Patronage Secretary to the Treasury, Sir W. H. Walrond.

Secretary to the Admiralty, Mr. W. E. Macartney.

Under-Secretary, Home Office, Rt. Hon. Jesse Collings.

Under-Secretary, Colonial Office, Earl of Selborne.

Parliamentary Secretary, Local Government Board, Mr. T. W. Russell.

Financial Secretary, War Office, Mr. Powell Williams.



## GENERAL INFORMATION, &amp;c.

AUSTRALASIAN RATES OF POSTAGE, CITY,  
INLAND AND INTERCOLONIAL, &c.  
POSTAL RATES.

Articles transmitted by Post.	New S. Wales.	Victoria.	South Australia.	W. Australia.	Queensland.	Tasmania.	New Zealand.
(1)	(2)	(3)	(4)	(5)	(6)	(7)	(8)
<b>LETTERS:—</b>							
City or Suburban, for every $\frac{1}{2}$ oz. or under	-1/-	-1/-	-1/-	-1/-	-1/-	-1/-	-1/-
Country or Inland, for every $\frac{1}{2}$ oz. or under	-2/-	-2/-	-2/-	-2/-	-2/-	-2/-	-2/-
City or Suburban, for every oz. or under	-2/-	-2/-	-2/-	-2/-	-2/-	-2/-	-2/-
Country and Inland, for every oz. or under	-2/-	-2/-	-2/-	-2/-	-2/-	-2/-	-2/-
Intercolonial, every $\frac{1}{2}$ oz. or under	-2/-	-2/-	-2/-	-2/-	-2/-	-2/-	-2/-
Late fee on, in stamps affixed to letter	-2/-	-2/-	-2/-	-2/-	-2/-	-2/-	-2/-
Registration of letters, &c., in addition to postage	-3/-	-3/-	-3/-	-3/-	-3/-	-3/-	-3/-
<b>LETTER CARDS:—</b>							
Inland or Intercolonial, each	-1/-	-1/-	-1/-	-1/-	-1/-	-1/-	-1/-
<b>POST CARDS:—</b>							
City, Suburban, or Country, each	-1/-	-1/-	-1/-	-1/-	-1/-	-1/-	-1/-
Reply, double cards, each with stamp	-2/-	-2/-	-2/-	-2/-	-2/-	-2/-	-2/-
Intercolonial	-1/-	-1/-	-1/-	-1/-	-1/-	-1/-	-1/-
Reply -1/- stamp affixed to each card	-2/-	-2/-	-2/-	-2/-	-2/-	-2/-	-2/-
<b>NEWSPAPERS:—</b>							
Inland, to seven days from date not exceeding 10 ozs.	free	free	free	free	free	free	free
after seven days from date, each 100z.	-1/-	-1/-	-1/-	-1/-	-1/-	-1/-	-1/-
at date of publication and after, each	-1/-	-1/-	-1/-	-1/-	-1/-	-1/-	-1/-
Intercolonial, each 10 ozs. (except Q'land.)	-1/-	-1/-	-1/-	-1/-	-1/-	-1/-	-1/-
each 2 ozs., whether singly or in bulk	-1/-	-1/-	-1/-	-1/-	-1/-	-1/-	-1/-
In bulk, Inland or Intercolonial, per lb. or fraction thereof, if posted by a recognised newspaper publisher or news vendor	-1/-	-1/-	-1/-	-1/-	-1/-	-1/-	-1/-
<b>BOOK PACKETS:—</b>							
Inland, for every 2 ozs. or part thereof	-1/-	-1/-	-1/-	-1/-	-1/-	-1/-	-1/-
4 ozs.	-1/-	-1/-	-1/-	-1/-	-1/-	-1/-	-1/-
Intercolonial, for every 2 ozs.	-1/-	-1/-	-1/-	-1/-	-1/-	-1/-	-1/-
4 ozs.	-1/-	-1/-	-1/-	-1/-	-1/-	-1/-	-1/-
<b>PACKETS (Commercial, and Printed Papers, Samples and Patterns):—</b>							
Inland, for every 2 ozs.	-1/-	-1/-	-1/-	-1/-	-1/-	-1/-	-1/-
Intercolonial, for every 2 ozs.	-1/-	-1/-	-1/-	-1/-	-1/-	-1/-	-1/-
for every additional 2 ozs. or part thereof	-1/-	-1/-	-1/-	-1/-	-1/-	-1/-	-1/-
<b>MONEY ORDER RATES:—</b>							
Inland, on sums not exceeding £2..	-6/-	-6/-	-6/-	-6/-	-6/-	-6/-	-6/-
" " " £2.5..	-6/-	-6/-	-6/-	-6/-	-6/-	-6/-	-6/-
" " " £3..	-6/-	-6/-	-6/-	-6/-	-6/-	-6/-	-6/-
" " " £3.5..	-6/-	-6/-	-6/-	-6/-	-6/-	-6/-	-6/-
" " " £4..	-6/-	-6/-	-6/-	-6/-	-6/-	-6/-	-6/-
" " " £4.5..	-6/-	-6/-	-6/-	-6/-	-6/-	-6/-	-6/-
" " " £5..	-6/-	-6/-	-6/-	-6/-	-6/-	-6/-	-6/-
" " " £5.5..	-6/-	-6/-	-6/-	-6/-	-6/-	-6/-	-6/-
" " " £6..	-6/-	-6/-	-6/-	-6/-	-6/-	-6/-	-6/-
" " " £6.5..	-6/-	-6/-	-6/-	-6/-	-6/-	-6/-	-6/-
" " " £7..	-6/-	-6/-	-6/-	-6/-	-6/-	-6/-	-6/-
" " " £7.5..	-6/-	-6/-	-6/-	-6/-	-6/-	-6/-	-6/-
" " " £8..	-6/-	-6/-	-6/-	-6/-	-6/-	-6/-	-6/-
" " " £8.5..	-6/-	-6/-	-6/-	-6/-	-6/-	-6/-	-6/-
" " " £9..	-6/-	-6/-	-6/-	-6/-	-6/-	-6/-	-6/-
" " " £9.5..	-6/-	-6/-	-6/-	-6/-	-6/-	-6/-	-6/-
" " " £10..	-6/-	-6/-	-6/-	-6/-	-6/-	-6/-	-6/-
" " " £10.5..	-6/-	-6/-	-6/-	-6/-	-6/-	-6/-	-6/-
" " " £11..	-6/-	-6/-	-6/-	-6/-	-6/-	-6/-	-6/-
" " " £11.5..	-6/-	-6/-	-6/-	-6/-	-6/-	-6/-	-6/-
" " " £12..	-6/-	-6/-	-6/-	-6/-	-6/-	-6/-	-6/-
" " " £12.5..	-6/-	-6/-	-6/-	-6/-	-6/-	-6/-	-6/-
" " " £13..	-6/-	-6/-	-6/-	-6/-	-6/-	-6/-	-6/-
" " " £13.5..	-6/-	-6/-	-6/-	-6/-	-6/-	-6/-	-6/-
" " " £14..	-6/-	-6/-	-6/-	-6/-	-6/-	-6/-	-6/-
" " " £14.5..	-6/-	-6/-	-6/-	-6/-	-6/-	-6/-	-6/-
" " " £15..	-6/-	-6/-	-6/-	-6/-	-6/-	-6/-	-6/-
" " " £15.5..	-6/-	-6/-	-6/-	-6/-	-6/-	-6/-	-6/-
" " " £16..	-6/-	-6/-	-6/-	-6/-	-6/-	-6/-	-6/-
" " " £16.5..	-6/-	-6/-	-6/-	-6/-	-6/-	-6/-	-6/-
" " " £17..	-6/-	-6/-	-6/-	-6/-	-6/-	-6/-	-6/-
" " " £17.5..	-6/-	-6/-	-6/-	-6/-	-6/-	-6/-	-6/-
" " " £18..	-6/-	-6/-	-6/-	-6/-	-6/-	-6/-	-6/-
" " " £18.5..	-6/-	-6/-	-6/-	-6/-	-6/-	-6/-	-6/-
" " " £19..	-6/-	-6/-	-6/-	-6/-	-6/-	-6/-	-6/-
" " " £19.5..	-6/-	-6/-	-6/-	-6/-	-6/-	-6/-	-6/-
" " " £20..	-6/-	-6/-	-6/-	-6/-	-6/-	-6/-	-6/-

NOTES.—(1) **New South Wales.**—Town delivery in SYDNEY includes every place within 10 miles radius. \* Except those posted in Sydney for delivery within the City boundaries which are charged 10 oz. -1/-, and -0/- for every additional 10 oz.

(2) **Tasmania.** Newspapers to West Australia and New Zealand, if posted within 7 days, free. To New South Wales, Victoria, South Australia and Queensland, 10 oz. and under, without limit of date -0/- each; each additional 10 oz. -0/- each. Newspapers posted within any city, town or district in Tasmania for delivery by letter carriers within such city, town or district, -0/- each.

(3) **New Zealand.** The Book Post is divided into (a) Commercial Papers, and (b) Printed Papers. (a) Within New Zealand for delivery from the office at which posted (town delivery), for every single commercial paper, not exceeding  $\frac{1}{2}$  oz. -0/- each. For delivery from any other office than that at which posted, and for town papers exceeding  $\frac{1}{2}$  oz., and not exceeding 4 oz. -1/-, each additional 2 oz. or fraction -0/- each. Intercolonial and all other places, not exceeding 10 oz. -2/- each, each additional 2 oz. or fraction -0/- each. (b) Including Books and Papers (except newspapers) in or beyond New Zealand, 2 oz. -0/- each. Patterns and Samples within and beyond the Colony for each packet not exceeding 4 oz. -1/-, each additional 2 oz. -0/- each. † Inland -1/-, Intercolonial and South Sea Islands, -2/-, other places -2/- each.

AUSTRALASIAN RATES OF POSTAGE, CITY,  
INLAND AND INTERCOLONIAL, &c.—contd.

(4) **West Australia.** Post Cards -0/- within limits of office where posted. Newspapers for delivery within the Colony, beyond the City or Town where published, if posted within one week from the date of publication, free. For delivery within the boundaries of such City or Town, -1/-.

(5) **Queensland.** † -1/- for delivery within the Colony only. Intercolonial, -2/- British and Foreign, -2/-.

**Postal Notes.** Are issued for sums varying from 1/- to 20/- at rates ranging from -0/- to -4/-, according to the value of the notes. In New Zealand from 1/- to £5, at rate -0/- to -6/-.

**Inland Parcel Post.** QUEENSLAND and NEW ZEALAND, -6 per lb. and -3 for every additional lb. or fraction of a lb.; limit of weight 11 lbs. VICTORIA, SOUTH AUSTRALIA and TASMANIA, 2 lbs. and under, -9, for additional lb. or fraction of a lb. -3; limit 7 lbs. (South Australia, 11 lbs.). NEW SOUTH WALES, 2 lbs. or under, -8, -3 each additional lb. to 11 lbs. Size 3 ft. 6 in., in length, or 6 ft. greatest length and girth combined.

**Intercolonial Parcel Post.** 1 lb. or under -8, each additional lb. to 11 lbs. -6; size 3 ft. 6 in. in length, or 6 ft. in length and girth combined.

I.—GENERAL RATES FROM AUSTRALASIAN COLONIES  
TO UNITED KINGDOM AND OTHER COUNTRIES.

1. **LETTERS.** Every  $\frac{1}{2}$  oz. or fraction thereof, -2/- each. Letters can be registered by affixing stamps to the value of -3 in addition to the Postage. LATE LETTERS can be posted on payment of late fee varying in different Colonies from -2/- to -6/-.

2. **NEWSPAPERS,** not exceeding 4 oz. each -1/-; each additional 2 oz., -0/-.

3. **BOOKS, PACKETS, PATTERNS & SAMPLES**—2 oz. -1/-; and for every additional 2 oz. or fraction thereof, -1/-.

4. **COMMERCIAL PAPERS.** Not exceeding 2 oz. -3/-, 4 oz. -3/-, 6 oz. -4/-, 8 oz. -4/-, 10 oz. -5/-, every additional 2 oz. or fraction of 2 oz. (up to 5 lbs.), -1/-.

5. **PARCEL POST.** For every Parcel to the United Kingdom not exceeding 1 lb., 1/-; for every additional lb., or fraction thereof, up to 11 lbs. maximum weight allowed, -6/-.

6. **PRINTED PAPERS** (other than newspapers). For every 2 oz. or fraction of 2 oz. (up to 5 lbs.), -1/-.

7. **NOTES.** (1). No letter for a Colony or Foreign Country may exceed 2 ft. in length, or 1 ft. in width or depth. (2). Limit of weight of Patterns or Samples to the United Kingdom 1 lb. (NEW ZEALAND, 5 lbs.; TASMANIA 12 oz. to United Kingdom and Foreign Countries).

II.—RATES & COMMISSION ON MONEY ORDERS TO  
UNITED KINGDOM, &c.

	£2 and under	Above £2 & up to £4	Above £4 & up to £6	Above £6 & up to £8	Above £8 & up to £10
1. From WEST AUSTRALIA, and SOUTH AUSTRALIA to United Kingdom, &c.	1/-	2/-	3/-	4/-	5/-
2. From NEW SOUTH WALES, VICTORIA and TASMANIA to United Kingdom, &c.	1/-	2/6	3/6	4/6	5/6
3. From QUEENSLAND to all places	1/-	2/-	3/-	4/-	5/-
4. From NEW ZEALAND to United Kingdom, British Colonies, other than Australasian, India, and European Cities	1/-	2/-	3/-	4/-	5/-
From NEW ZEALAND to United States & Canada, Limit £20 (11/-).	1/6	2/6	3/6	4/6	5/6

## GENERAL INFORMATION, &amp;c.

## MOON'S TRANSIT

OVER THE MERIDIAN TEN HOURS EAST OF GREENWICH.

Jan.	Feb.	Mar.	April	May	June	July	Aug.	Sept.	Oct.	Nov.	Dec.
h. m. a. f.	h. m. a. f.	h. m. a. f.	h. m. a. f.	h. m. a. f.	h. m. a. f.	h. m. a. f.	h. m. a. f.	h. m. a. f.	h. m. a. f.	h. m. a. f.	h. m. a. f.
1 6 55	7 59	6 41	7 48	7 55	8 54	9 34	11 29	morn.	0 11	1 22	1 47
2 7 40	8 49	7 31	8 34	8 40	9 39	10 19	11 39	morn.	1 0	2 13	2 35
3 8 26	9 40	8 21	9 19	9 27	10 51	11 45	0 26	1 34	1 49	3 4	3 21
4 9 15	10 20	9 10	10 4	10 16	11 36	12 19	0 48	1 19	2 22	3 53	4 5
5 10 5	11 17	9 57	10 51	11 10	morn.	0 48	2 9	3 10	3 31	4 41	4 46
6 10 58	morn.	10 43	11 39	morn.	1 2	1 48	2 57	3 59	4 22	5 26	5 30
7 11 46	0 4	11 28	morn.	0 9	2 7	2 42	3 44	4 50	5 12	6 10	6 11
8 morn.	0 49	morn.	0 31	1 12	3 7	3 32	4 31	5 40	6 11	6 53	6 55
9 0 35	1 34	0 13	1 26	2 17	4 52	4 40	5 31	6 31	6 48	7 36	7 41
10 1 22	2 18	1 0	2 25	3 21	5 40	5 28	6 18	7 20	7 33	8 19	8 30
11 2 8	3 4	1 48	3 27	4 21	6 25	6 37	7 47	8 55	9 0	9 53	10 24
12 2 52	3 53	2 40	4 30	5 17	7 0	7 24	8 37	9 40	9 44	10 40	11 28
13 3 35	4 45	3 35	5 11	6 9	7 54	8 24	9 37	10 33	10 39	11 44	a. o. 32
14 4 6	5 40	4 34	6 2	7 22	8 40	9 2	10 14	11 7	11 16	a. o. 45	1 36
15 5 6	6 39	5 30	7 8	8 11	9 26	9 52	11 0	11 51	a. o. 6	1 48	2 36
16 5 55	7 41	6 36	8 11	9 10	10 16	10 42	11 44	a. o. 36	1 0	2 51	3 32
17 6 47	8 43	7 38	9 55	11 6	11 30	a. o. 27	1 23	1 58	3 51	4 4	4 24
18 7 49	10 40	9 25	10 28	10 43	11 56	a. o. 17	1 10	2 14	2 59	4 47	5 12
19 8 54	11 33	10 14	11 12	11 30	a. o. 46	1 1	1 54	3 8	4 0	5 39	5 59
20 9 54	a. o. 23	11 1	11 58	a. o. 20	1 14	1 40	2 29	4 5	5 0	6 26	6 46
21 10 58	1 10	11 46	a. o. 46	1 10	2 30	3 26	4 5	5 57	7 15	7 33	7 33
22 11 58	1 55	a. o. 32	1 35	2 0	3 4	4 17	5 6	6 51	7 1	8 21	8 21
23 12 46	2 41	1 18	2 25	2 49	4 47	5 54	6 10	7 42	8 47	9 10	9 10
24 1 34	3 26	2 5	3 15	3 36	5 45	6 52	7 11	8 55	9 17	10 24	10 51
25 2 20	4 13	2 53	4 5	4 22	6 36	7 41	8 55	9 17	10 24	10 51	11 42
26 3 2	5 1	3 42	5 4	5 49	7 26	8 31	9 40	10 4	11 14	11 42	morn.
27 4 5	5 51	4 32	6 26	6 31	8 10	9 14	10 35	10 51	morn.	0 6	0 31
28 5 34	6 26	5 3	6 26	6 31	8 35	9 24	10 11	11 43	morn.	0 57	1 18
29 6 21	6 13	7 11	7 17	7 32	9 24	10 11	11 43	morn.	0 57	1 18	2 2
30 7 9	7 1	8 4	8 4	8 4	10 28	11 50	0 30	0 30	0 30	0 30	0 30

Note.—The Moon's Transit at any place is the time when the Moon is on the meridian of that place. To obtain Standard Time for other places from above Table:—Perth add 21 minutes; Melbourne add 21 minutes; Hobart add 11 minutes; Dunedin add 5 minutes; Christchurch subtract 4 minutes; Sydney subtract 5 minutes; Brisbane subtract 12 minutes; Adelaide subtract 12 minutes; Auckland subtract 13 minutes.

## INTER-COLONIAL TELEGRAPHIC RATES.

	N.S.W.		Victoria		S. Australia		W. Australia		Queensland		Tasmania		N. Zealand	
	ro words	each ad.	ro words	each ad.	ro words	each ad.	ro words	each ad.	ro words	each ad.	ro words	each ad.	ro words	each ad.
Inland .. .. .	1/-	1/-	*	*	1/-	1/-	1/-	1/-	1/-	1/-	1/-	1/-	†	†
From N. S. Wales to .. .. .	1/-	1/-	1/-	2/-	2/-	2/-	3/-	2/-	2/-	2/-	2/-	2/-	3/-	3/-
„ Victoria .. .. .	1/-	1/-	1/-	2/-	2/-	2/-	3/-	3/-	3/-	3/-	2/-	2/-	3/-	3/-
„ South Aust., .. .. .	2/-	2/-	2/-	2/-	2/-	2/-	2/-	2/-	3/-	3/-	3/-	3/-	4/-	4/-
„ West Aust., .. .. .	3/-	3/-	3/-	3/-	3/-	3/-	3/-	3/-	4/-	4/-	4/-	4/-	5/-	5/-
„ Queensland, .. .. .	2/-	2/-	3/-	3/-	3/-	3/-	4/-	4/-	4/-	4/-	4/-	4/-	5/-	5/-
„ Tasmania .. .. .	2/-	2/-	3/-	3/-	3/-	3/-	4/-	4/-	4/-	4/-	4/-	4/-	5/-	5/-
„ N. Zealand .. .. .	3/-	3/-	3/-	3/-	4/-	4/-	5/-	5/-	4/-	4/-	5/-	5/-	6/-	6/-

\* Inland—Victoria, 9 words or under -9, each additional word, -1.

† Inland—New Zealand, 12 words or under -6, each additional word, -1.

AUSTRALASIAN COLONIES, POPULATION, 1891,  
AND APPROXIMATE TIME OF TRANSIT  
FROM LONDON.

COLONY	POPULATION.	TIME FROM LONDON TO CAPITAL.
New South Wales .. ..	1,165,300	44 to 47 days
Victoria .. ..	1,140,405	41 to 44 days
Western Australia .. ..	52,285	35 to 38 days
South Australia .. ..	320,723	39 to 42 days
Queensland .. ..	393,178	45 to 48 days
New Zealand .. ..	626,658	49 days
Tasmania .. ..	152,160	42 to 46 days



# GENERAL INFORMATION, &c.

## THE BRITISH EMPIRE.

### COLONIAL GOVERNORS.

#### INDIAN.

\*INDIA—Viceroy and Governor General, Earl of Elgin and Kincardine, G.M.S.I., G.M.I.E. (Rs. 20,833).

Bengal—Lieutenant-Governor—Hon. Sir A. Mackenzie, K.C.S.I. (Rs. 8,333). Punjab—Lieutenant-Governor—Sir W. Mackworth Young, K.C.S.I. (Rs. 8,333).

N.W. Prov. and Oudh—Lieutenant-Governor—Sir Antony P. Macdonell, K.C.S.I. (Rs. 8,333).

Central Prov.—Chief Commissioner—C. J. Lyall, C.S.I. (Rs. 4,166).

Burmah—Chief Commissioner—Sir F. W. R. Fryer, K.C.S.I. (Rs. 6,666).

Assam—Chief Commissioner—Sir W. E. Ward, K.C.S.I. (Rs. 4,166).

Madras—Governor—Sir A. Havelock, G.C.M.G. (Rs. 10,000).

Bombay—Governor—Rt. Hon. Lord Sandhurst, G.C.I.E. (Rs. 10,000).

#### NORTH AMERICAN.

CANADA—The Rt. Hon. the Earl of Aberdeen, G.C.M.G. (\$50,000).

#### Provinces of Canada:—

ONTARIO—Lieut.-Col. G. A. Kirkpatrick (\$10,000).

QUEBEC—Sir J. A. Chapleau, K.C.M.G., LL.D. (\$9,000).

NOVA SCOTIA—The Hon. M. B. Daly (\$9,000).

NEW BRUNSWICK—The Hon. A. R. McClellan (\$9,000).

MANITOBA—The Hon. J. C. Patterson (\$10,000).

BRITISH COLUMBIA—The Hon. E. Dewdney (\$9,000).

PRINCE EDWARD ISLAND—G. W. Howland (\$7,000).

NORTH-WEST TERRITORIES—C. H. Macintosh (\$7,000).

NEWFOUNDLAND—Sir H. H. Murray, K.C.B. (\$7,000).

#### WEST INDIAN.

JAMAICA—Sir H. A. Blake, K.C.M.G. (£6,000).

BRITISH HONDURAS—Col. D. Wilson, C.M.G. (£1,800).

BRITISH GUIANA—Sir A. W. Hemming, K.C.M.G. (£5,000).

BAHAMA ISLANDS—Sir W. F. Haynes Smith, K.C.M.G. (£2,000).

TRINIDAD—Sir H. E. H. Jerningham, K.C.M.G. (£5,000).

BARBADOS—Sir J. S. Hay, K.C.M.G. (£3,000).

#### Windward Islands:—

GRENADA—Sir C. A. Moloney, K.C.M.G. (£2,500).

ST. VINCENT—H. L. Thompson (£700).

ST. LUCIA—C. A. King-Harman, C.M.G. (£800).

#### Leeward Islands:—

ANTIGUA—Sir F. Fleming, K.C.M.G. (£2,600).

ST. CHRISTOPHER NEVIS—T. R. Griffith, C.M.G. (£900).

DOMINICA—P. A. Templer (£900).

\* Salaries are (excluding allowances) stated in Rupees per mensem.

## THE BRITISH EMPIRE—contd.

MONTERRAT—E. Baynes (£400).

VIRGIN ISLANDS—N. G. Cookman (£250).

BERMUDA ISLANDS—Lieut.-Gen. G. D. Barker, C.B. (£2,946).

#### AFRICAN.

CAPE OF GOOD HOPE—Sir A. Milner, K.C.B. (£5,000 and £3,000 as High Commissioner for South Africa).

BASUTOLAND—G. Y. Lagden, C.M.G. (£1,500).

NATAL—The Hon. Sir W. F. Hely-Hutchinson, K.C.M.G. (£4,000 and £1,000 as Governor of Zululand).

ZULULAND—Resident Commissioner—Col. Sir M. J. Clarke, K.C.M.G. (£1,800).

S. AFRICAN REPUBLIC—British Resident, W. C. Greene, C.B.

ST. HELENA—R. A. Sterndale (£500).

SIERRA LEONE—Col. F. Cardew, C.M.G. (£2,000).

GAMBIA—R. B. Llewellyn, C.M.G. (£1,200).

GOLD COAST—Sir W. E. Maxwell, K.C.M.G. (£4,000).

LAGOS—Major H. E. McCallum, R.E., C.M.G. (£3,000).

#### MEDITERRANEAN.

GIBRALTAR—Gen. Sir R. Biddulph, R.A., G.C.M.G., K.C.B. (Ps. 125,000).

MALTA—Gen. Sir A. J. L. Fremantle, K.C.M.G., C.B. (£5,000).

CYPRUS—Sir W. J. Sendall, K.C.M.G. (£3,000).

#### EASTERN.

CEYLON—The Rt. Hon. Sir J. West Ridgeway, K.C.B., K.C.S.I. (Rs. 80,000).

HONG KONG—Sir W. Robinson, K.C.M.G. (\$32,000).

MAURITIUS—Sir Charles Bruce, K.C.M.G. (Rs. 50,000).

SEYCHELLES ISLANDS—H. C. Stewart (Rs. 11,000).

STRAITS SETTLEMENTS—Lieut.-Col. Sir C. B. H. Mitchell, G.C.M.G. (£33,800).

LABUAN—L. P. Beaufort.

#### MISCELLANEOUS.

FALKLAND ISLANDS—W. Grey-Wilson, C.M.G. (£1,200).

JERSEY—Lieut.-Gov. Major-Gen. E. Hopton, C.B. (£1,700).

GUERNSEY—Lieut.-Gen. N. Stevenson (£1,700).

ISLE OF MAN—The Rt. Hon. Lord Henniker (£1,800).

#### MOHAMMEDAN CALENDAR, 1898.

1898.				1315.	
January	24	...	...	Ramadan	1
February	23	...	...	Shawwal	1
March	24	...	...	Dulkaada	1
April	23	...	...	Duhagga	1
				1316.	
May	22	...	...	Muharram	1
June	21	...	...	Saphar	1
July	20	...	...	Rabia I.	1
August	19	...	...	Rabia II.	1
September	17	...	...	Jomada I.	1
October	17	...	...	Jomada II.	1
November	15	...	...	Rajab	1
December	15	...	...	Shaaban	1

## COLONIAL AGENTS—CROWN AND OTHERS.

CROWN AGENTS FOR COLONIES—Sir M. F. Ommamney, K.C.M.G.; E. E. Blake, Esq., and Major M. A. Cameron, R.E., Downing-street, and 1, Tokenhouse-buildings.

CANADA—Sir Donald A. Smith, G.C.M.G., High Commissioner; J. G. Colmer, C.M.G., Secretary, 17, Victoria-street.

ONTARIO—P. Byrne, Emigration Agent, Nottingham-buildings, 19, Brunswick-street, Liverpool.

BRITISH COLUMBIA—F. G. Vernon, 39, Victoria-street.

CAPE OF GOOD HOPE—Sir David Tennant, K.C.M.G.; J. S. Brydges Todd, C.M.G., 112, Victoria-street.

NATAL—W. Peace, C.M.G., Agent-General; R. Russell, Sec., 64, Victoria-street.

NEW SOUTH WALES—Hon. Sir Saul Samuel, K.C.M.G., C.B.; S. Yardley, C.M.G., Secretary, 9, Victoria-street.

VICTORIA—Lieut.-General Sir Andrew Clarke; S. B. H. Rodgeron, Acting Secretary, 15, Victoria-street.

SOUTH AUSTRALIA—Hon. Thomas Playford; T. F. Wicksteed, Secretary, 1, Crosby-square, Bishopsgate-street Within.

QUEENSLAND—Sir Henry Norman, G.C.B.; Secretary, C. S. Dicken, C.M.G., 1, Victoria-street.

WESTERN AUSTRALIA—Hon. Sir M. Fraser, K.C.M.G.; R. C. Hare, Secretary, 15, Victoria-street.

NEW ZEALAND—Hon. W. P. Reeves; Walter Kennaway, C.M.G., Secretary, 13, Victoria-street.

TASMANIA—Hon. Sir R. G. W. Herbert, G.C.B., D.C.L., LL.D., 5, Victoria-street.

#### WAGES TABLE.

Yr.	Per Month.	Per Week.	Per Day.
£	s. d.	£ s. d.	s. d.
1	0 1 8	0 0 4½	0 0½
2	0 3 4	0 0 9½	0 1½
3	0 5 0	0 1 1½	0 2
4	0 6 8	0 1 6½	0 2½
5	0 8 4	0 1 11	0 3½
6	0 10 0	0 2 3½	0 4
7	0 11 8	0 2 8½	0 4½
8	0 13 4	0 3 0½	0 5½
9	0 15 0	0 3 5½	0 6
10	0 16 8	0 3 10	0 6½
12	1 0 0	0 4 7½	0 8
14	1 3 4	0 5 4½	0 9½
16	1 6 8	0 6 1½	0 10½
18	1 10 0	0 6 11	0 11½
20	1 13 4	0 7 8	1 1½
30	2 10 0	0 11 6	1 7½
40	3 6 8	0 15 4½	2 2½
50	4 3 4	0 19 2½	2 9
60	5 0 0	1 3 0½	3 3½
70	5 16 8	1 6 10½	3 10
80	6 13 4	1 10 8½	4 4½
90	7 10 0	1 14 7½	4 11½
100	8 6 8	1 18 5½	5 5½
110	9 3 4	2 2 3½	6 0½
120	10 0 0	2 6 2	6 7
130	10 16 8	2 10 0	7 1½
140	11 13 4	2 13 10	7 8
150	12 10 0	2 17 8½	8 2½
200	16 13 4	3 16 11	10 11½

If wages be Guineas instead of Pounds, to each Guinea add 1d. to the Month, or 2d. to the week.

# LESSONS FOR SUNDAYS, &c., FOR 1898.

Day of Month.	Sundays, &c.	Morning Prayer.		Evening Prayer.	
		First.	Second.	First.	Second.
JAN. 1	Circumcision	Genesis 17 v. 9	Romans 2 v. 17	Deuteronomy 10 v. 12	Colossians 2 v. 8 to v. 18
" 2	2 af. Chris.	Isaiah 42	Matthew 1 v. 18	Isaiah 43 or 44	Acts 1
" 6	Epiphany	—60	Luke 3 v. 15 to v. 23	—49 v. 13 to v. 24	John 2 to v. 12
" 9	1 af. Epiph.	—51	Matthew 5 v. 33	—52 v. 13 and 53 or 54	Acts 5 v. 17
" 16	2—	—55	—9 v. 18	—57 or 61	—9 v. 23
" 23	3—	—62	—13 v. 24 to v. 53	—65 or 66	—14
" 30	4—	Job 27	—16 v. 24 to 17 v. 14	Job 28 or 29	—18 to v. 24
FEB. 6	Septuagesima	Genesis 1 and 2 to v. 4	Revelation 21 to v. 9	Genesis 2 v. 4 or Job 38	Revelation 21 v. 9 to 22 v. 6
" 13	Sexagesima	—3	Matthew 24 v. 29	—6 or 8	Acts 27 v. 18
" 20	Quinquages.	—9 to v. 20	—27 v. 27 to v. 57	—12 or 13	Romans 4
" 23	Ash Wednes.	Isaiah 58 to v. 13	Mark 2 v. 13 to v. 23	Jonah 3	Hebrews 12 v. 3 to v. 18
" 27	1 in Lent	Genesis 19 v. 12 to v. 30	—3 v. 13	Genesis 22 to v. 20 or 23	Romans 9 v. 19
MAR. 6	2—	—27 to v. 41	—7 to v. 24	—28 or 32	—15 v. 8
" 13	3—	—37	—11 to v. 27	—39 or 40	1 Corinthians 6
" 20	4—	—42	—14 v. 53	—43 or 45	—11 v. 17
" 27	5—	Exodus 3	Luke 2 v. 21	Exodus 5 or 6 to v. 14	—16
APRIL 3	Palm Sunday	—9	Matthew 26	—10 or 11	Luke 19 v. 28, or 20 v. 9 to v. 21
" 8	Good Friday	Genesis 22 to v. 20	John 18	Isaiah 52 v. 13 and 53	1 Peter 2
" 10	Easter Day	Exodus 12 to v. 29	Revelation 1 v. 10 to v. 19	Exodus 12 v. 29 or 14	John 20 v. 11 to v. 19 or Revelation 5
" 17	Low Sunday	Numbers 16 to v. 36	1 Corinthians 15 to v. 29	Numbers 16 v. 36 or 17 to v. 12	John 20 v. 24 to v. 30.
" 24	2 af. Easter	—20 to v. 14	Luke 18 to v. 31	—20 v. 14 to 21 v. 10 or 21 v. 10	Philippians 1
MAY 1	3—	—22, or Isaiah 61	John 1 v. 43	—23 or 24 or Zechariah 4	Colossians 3 to v. 18
" 8	4—	Deuteronomy 4 to v. 23	Luke 24 v. 13	Deuteronomy 4 v. 23 to v. 41 or 5	1 Thessalonians 5
" 15	Rogation	—6	John 4 v. 31	—9 or 10	1 Timothy 4
" 19	Ascension	Daniel 7 v. 9 to v. 15	Luke 24 v. 44	2 Kings 2 to v. 16	Hebrews 4
" 22	S. af. Ascens.	Deuteronomy 30	John 7 v. 25	Deuteronomy 34 or Joshua 1	Titus 1
" 29	Whitsunday	—16 to v. 18	Romans 8 to v. 18	Isaiah 11, or Ezekiel 36 v. 25	Galatians 5 v. 16 or Acts 18 v. 24 to 19 v. 21
JUNE 5	Trinity Sun.	Isaiah 6 to v. 11	Revelation 1 to v. 9	Genesis 18 or 1 and 2 to v. 4	Ephesians 4 to v. 17 or Matthew 3
" 12	1 af. Trinity	Joshua 3 v. 7 to 4 v. 15	John 19 v. 25	Joshua 5 v. 13 to 6 v. 21 or 24	James 3
" 19	2—	Judges 4	Acts 3	Judges 5 or 6 v. 11	1 Peter 4 v. 7
" 26	3—	1 Samuel 2 to v. 27	—7 v. 35 to 8 v. 5	1 Samuel 3 or 4 to v. 19	1 John 2 to v. 15
JULY 3	4—	—12	—10 v. 24	—13 or Ruth 1	2 John
" 10	5—	—15 to v. 24	—15 v. 30 to 16 v. 16	—16 or 17	Matthew 4 v. 23 to 5 v. 13
" 17	6—	2 Samuel 1	—20 to v. 17	2 Samuel 12 to v. 24 or 18	—8 v. 18
" 24	7—	1 Chronicles 21	—24	1 Chronicles 22 or 28 to v. 21	—12 v. 22
" 31	8—	—29 v. 9 to v. 29	Romans 1	2 Chronicles 1 or 1 Kings 3	—16 to v. 24
AUG. 7	9—	1 Kings 10 to v. 25	—7	1 Kings 11 to v. 15 or 11 v. 26	—20 v. 17
" 14	10—	—12	—11 v. 25	—13 or 17	—24 to v. 29
" 21	11—	—18	1 Corinthians 1 v. 26 and 2	—19 or 21	—27 to v. 27
" 28	12—	—22 to v. 41	—8	2 Kings 2 to v. 16 or 4 v. 8 to v. 38	Mark 2 v. 23 to 3 v. 13
SEPT. 4	13—	2 Kings 5	—14 to v. 20	—6 to v. 24 or 7	—6 v. 30
" 11	14—	—9	2 Corinthians 2 v. 14 and 3	—10 to v. 32 or 13	—10 v. 32
" 18	15—	—18	—10	—19 or 23 to v. 31	—14 v. 27 to v. 53
" 25	16—	2 Chronicles 36	Galatians 4 to v. 21	Nehemiah 1 and 2 to v. 9 or 8	Luke 2 to v. 21
OCT. 2	17—	Jeremiah 5	Ephesians 3	Jeremiah 22 or 35	—5 v. 17
" 9	18—	—36	Philippians 3	Ezekiel 2 or 13 to v. 17	—9 to v. 28
" 16	19—	Ezekiel 14	1 Thessalonians 1	—18 or 24 v. 15	—12 v. 35
" 23	20—	—34	2 Thessalonians 3	—37 or Daniel 1	—17 to v. 20
" 30	21—	Daniel 3	2 Timothy 1	Daniel 4 or 5	—20 v. 27 to 21 v. 5
NOV. 6	22—	—6	Titus 3	—7 v. 9 or 12	—23 v. 26 to v. 50
" 13	23—	Hosea 14	Hebrews 7	Joel 2 v. 21 or 3 v. 9	John 3 v. 22
" 20	24—	Ecclesiastes 11 and 12	—12	Haggai 2 to v. 10 or Malachi 3 and 4	—6 v. 41
" 27	1 in Advent	Isaiah 1	1 Peter 1 to v. 22	Isaiah 2 or 4 v. 2	—10 v. 22
DEC. 4	2—	—5	2 Peter 1	—11 to v. 11 or 24	—13 v. 21
" 11	3—	—25	1 John 3 v. 16 to 4 v. 7	—26 or 28 v. 5 to v. 19	—18 v. 28
" 18	4—	—30 to v. 27	Revelation 2 v. 18 to 3 v. 7	—32 or 33 v. 2 to v. 23	Revelation 3 v. 7
" 25	Christmas D.	—9 to v. 8	Luke 2 to v. 15	—7 v. 10 to v. 17	Titus 3 v. 4 to v. 9

NOTE.—When a Saint's Day falls on a Sunday, the Lessons for both Sunday and Saint's Day are given, those for the Saint's Day being in Italics. In 1898 SS. Philip and James (May 1) falls on the 3rd Sunday after Easter.



CONCISE DIRECTORY.

Memoranda of Things Lent, &c.

We have inserted this short Directory for the use of our Subscribers under the impression that it will prove of utility to country and foreign residents who may desire to communicate with a firm in any particular Trade or Profession, and have no means at hand of knowing whom to address.

- Acts of Parliament, Parliamentary Papers & Government Publications**—  
(Sole Agents in England and Wales.)  
Byre & Spottiswoode,  
East Harding-street, E.C.
- Advertising Agents and Contractors**—  
For all Newspapers and Magazines.  
John Day & Co., Limited,  
12, Coleman-street, London, E.C.
- Aerated Pastry Flour**—  
Coombs' Eureka Aerated Flour Co., Ltd.,  
4, Stanford-street, Nottingham, and  
8a, Farringdon-road, London, E.C.  
Also Owners of Farrar's Pastry Roller  
(Patent). Telegraphic address: "Eureka,  
Nottingham"; "Antidotal, London."
- Alkali Manufacturers**—  
Brunner Mond & Co., Limited,  
Northwich, England.  
Mfrs. of Pure Alkali, Caustic Soda, Re-  
fined Bicarbonate of Soda, Soda Crystals,  
Concentrated Crystal Soda and Bleaching  
Powder.
- Ammonia**—  
Anhydrous, Liquid and Nitrate.  
The Standard Ammonia Co., Limited,  
70, Gracechurch-street, London, E.C.
- Ammunition**—  
The King's Norton Metal Co., Limited,  
King's Norton, near Birmingham,  
England. Managing Directors:  
T. R. and T. A. Baylis.  
Tele. Add.: "Metal, King's Norton."  
Manufacturers of all kinds of military  
ammunition for small arms and quick-firing  
guns. Rolled Brass, Copper, Nickel, &c.,  
&c. Brass and Copper Rivets and other  
Specialties.
- Art Furniture Manufacturers**—  
Oetzmann & Co., 62 to 79, Hampstead-rd.,  
London; 61, Grafton-street, Dublin;  
and 75, Union-street, Ryde, I. W.
- Art Metal Workers**—  
Strode & Co., Head Office and Works, 48,  
Osnaburgh-street, Regent's Park, London,  
N.W. Show Rooms, 67, St. Paul's Church-  
yard, E.C., 188, Piccadilly, W. Electric  
Fittings, Sun Burners, &c.
- Billiard Tables and Fittings**—  
Burroughes & Watts, Ltd., Soho-square,  
London, W. Makers to H.R.H. the Duke  
of Edinburgh and H.R.H. the Duke of  
Connaught. The new patent "Vacuum  
Eureka" steel block cushion, lower and  
faster, never gets hard; requires no pumping  
or inflating; always in good order; balls  
do not hang against cushion. *Enormous  
success. Can be fitted to any Table.*
- Boot Laces, Tapes, &c.**—  
Faire, Bros. & Co.,  
St. George's Mills, Leicester.  
Branch, 30, Fore-street, London, E.C.  
Boot and Shoe Laces, Tapes, Skirt Beltings,  
Prussian Bindings and Boot Webs.
- Boots and Shoes**—  
Derham Brothers,  
Northampton, Bristol and Warrley.  
Wholesale and Export only. The Z and  
Aerial Brands. Tennis, Cycle and all  
other descriptions.
- Brass Founders**—  
Evered & Co., Limited, Barnet Works,  
Devonshire-street, Birmingham;  
Surrey Works, Smethwick; and  
27 to 35, Drury-lane, London, W.C.  
Makers of every description of Brass Goods.
- Calico Sacks**—  
From 1 to 140 lbs. in white and un-  
bleached Calico.  
T. & W. Judge,  
Manufacturers and Printers,  
Cumberland Works and Manchester  
Works, Kennington, London.  
Tele. address: "Cotton Bags, London."
- Candles**—  
Price's Patent Candle Co., Limited,  
Belmont Works, Battersea,  
London, S.W., and Bramborough  
Pool Works, near Birkenhead.
- Carriage Manufacturers**—  
Henry Whitlock, Limited,  
Holland Gate, Kensington, and  
Turnham Green, London, W.
- Clerical Tailor, Outfitter and Robe  
Maker**—John Seary,  
London: 13, New Oxford-street, W.  
Oxford: Queen-street.
- Cocoa, Cocoaaine and Chocolate Manu-  
facturers**—  
James Epps & Co., Limited,  
Manufactory: Holland-street,  
Blackfriars, London.
- Colonial and Indian Agents and  
General Merchants**—  
James Porter & Co.,  
13, Fenchurch-avenue, London, E.C.  
(Indents promptly executed.)
- Condensed Milk**—  
The Anglo-Swiss Condensed Milk Co.,  
10, Mark-lane, London, E.C.  
"Milkmaid" Brand, Swiss and English.  
"Ideal" Brand of Unsweetened Condensed  
Milk, sterilized, enriched with cream.
- Confectioners**—  
M. A. Craven & Son,  
Ebor Confectionery Works, York.
- Cotton Bags (Speciality for all  
Trades)**—  
W. H. Feltham & Co.,  
87, Tooley-street, London, S.E.
- Cranes and Lifting Machinery of  
every Description, our Speciality**—  
Thomas Smith, Steam Crane Works,  
Old Foundry, Rodley, near Leeds.
- Cyder**—  
John Symons & Co., Ltd.,  
Totnes, Devon, and Ratcliff, London, E.  
Devonshire Champagne Cyder. Special  
brands: "Imperial," and "Apple and  
Blossom." Sole makers of Symonia and  
Sydrina.
- Elastic Boot Webs & Shoe Mercery**—  
Faire, Bros. & Co.,  
St. George's Mills, Leicester.  
Branch, 30, Fore-street, London, E.C.  
Manufacturers of the "Elephant"  
Branch and other kinds of Elastic Webs,  
Boot Laces, Linings, Boot Webs and  
general Shoe Mercery.
- Electrical Engineers and Contractors,**  
Electric Ovens and Heating Apparatus,  
Crompton & Co., Limited,  
Mansion House Buildings, London,  
and Arc Works, Chelmsford.
- Elevators**—  
R. Waygood & Co., Limited,  
Falmouth-road, London, S.E.
- Fire Brick Manufacturers**—  
E. J. & J. Pearson,  
Fire Clay Works, Stourbridge.
- Gas, Water and Sanitary Fittings,  
and Hot Water Apparatus**—  
The Thames Bank Iron Co.,  
Upper Ground-street, London, S.E.
- Gelatine**—  
Nelson, Dale & Co., Limited,  
14, Dowgate-hill, London, E.C.
- Glass Manufacturers**—  
Pilkington Brothers, Limited,  
St. Helen's, Lancashire, England.  
Manufacturers of Polished Plate, Sheet,  
Rolled, Rough Cast, Chequered, Corru-  
gated, Diamond and Quarry Rolled,  
Plain and Fancy Cathedral, Brilliant  
Cut, Enamelled, Mechanical Embossed,  
Patent Wired Roofing Glass, &c.
- Horse Hair Manufacturers**—  
Edward Webb & Sons,  
Copenhagen-street, Worcester.  
Hair Cloth of all kinds, Curled Hair, Horse  
Hair Carpet, Hop and Cider Cloths,  
Hair Mattresses, Brush Drafts.
- Horse Shoes and Nails**—  
The United Horse Shoe & Nail Co., Ltd.,  
Cubitt Town, London, E.
- Hydraulic Machinery**—  
Presses, Pumps, Accumulators, Riveters,  
Valves, &c.  
Henry Berry & Co., Leeds.
- Lamp (Street), &c., Manufacturers.**  
Electric Light Pillars, Brackets, &c.—  
Walter Macfarlane & Co., Limited,  
Architectural, Sanitary and General  
Ironfounders,  
Saracen Foundry, Glasgow.
- Lead Manufacturers**—  
Locke, Blackett & Co.,  
Proprietors of the Old Brand, L. B.  
& Co., Newcastle-on-Tyne.  
Pig Lead, Sheets, Pipe, Shot, White Lead,  
dry & in oil, Red Lead, Orange & Litharge.
- Leggings and Gaiters**—  
Lennard Bros., Asylum-street, Leicester.  
Ladies' and Children's Cloth Gaiters  
in all qualities.
- Linens**—  
Robinson & Cleaver, Belfast, Ireland; &  
166 & 170, Regent-street, London, W.  
Irish Linen, Damask, Shirt, Collar and  
Handkerchief Mfrs. to H.M. the Queen, &c.
- Mantelpieces**—  
The Towyn Company, Limited,  
Birmingham, Hull, Gloucester, Man-  
chester. Head Office: Highgate-  
square, Birmingham, England.  
Manufacturers of Enamelled Slate Man-  
telpieces ("Raven" Brand) for Home and  
Export.
- Mapseller (Home, Colonial, and  
Foreign)**—Edward Stanford,  
26 and 27, Cockspur-street, Charing  
Cross, London, S.W.  
Geographer to Her Majesty the Queen.  
Catalogues free on application.
- Mineral Waters**—  
Messrs. J. Schweppe & Co., Limited,  
51, Berners-street London; also  
Margaret-street, Sydney.  
Temple Court, Melbourne.
- Mining, Quarry, Contractors' and  
Agricultural Tool Manufacturers**—  
The Hardy Patent Pick Co., Limited,  
Sheffield.
- Monument Manufacturers**—  
Alexander Macdonald & Co., Limited,  
Quarry Masters and Workers in  
Polished Granites to the Queen.  
Aberdeen Granite Works. Branch Office,  
373, Euston-road, London.
- Music Publishers**—  
Edwin Ashdown, Limited,  
Hanover-square, London, W.,  
New York and Toronto.
- Needle and Fishing Tackle Mfrs.**—  
Henry Milward & Sons, Limited,  
Washford Mills, Redditch.  
Sole Makers of the "Calyx-eyed" easy  
threading and "Best Best" Needles.  
Makers of the very best Fishing Tackle.
- Office Fitters and Furniture Mfrs.**—  
Newson & Co.,  
Finsbury House, Finsbury-square &  
2, 4 & 6, Worship-st., London, E.C.  
Mfrs. of all kinds of Office Furniture and  
Fittings. Largest Stock in London.
- Oils (Lubricating)**—  
MacArthur & Jackson, Glasgow.
- Opticians**—Ross & Co., Manufacturers,  
111, New Bond-street, London, W.  
Microscopes, Telescopes, Field Glasses,  
Photographic Lenses, &c., &c.  
Telegraphic Address: "Rossano, London."
- Outfitter (Universal) Provider, &c.**—  
William Whiteley,  
31 to 55, Westbourne-grove; 50 to 53,  
Kensington Gardens-square, and 147  
to 150, Queen's-road, Bayswater, W.
- Paint Manufacturers**—  
Locke, Blackett & Co., (Old Brand,  
L. B. & Co.), Newcastle-on-Tyne.  
Genuine White Lead Paint, Red Lead,  
Orange and Litharge.
- Paperhangings**—William Woollams & Co.,  
Sole Address—110, High-street, near  
Manchester-square, London, W.
- (ORIGINAL MAKERS) Artistic Wall  
Papers, free from arsenic.**
- Paper Makers**—  
Grosvenor Chater & Co., Limited,  
68, Cannon-street, London, E.C.  
Melbourne, c/o H. M. Collins, Tuckett's  
Chambers. Tel. Address: "Chater,  
London." A.B.C. Code used.
- Patent Agents**—Jensen & Son,  
77, Chancery-lane, London, W.C.  
Patents, Designs and Trade Marks secured  
all over the World.
- Pianoforte Manufacturers**—  
Pohlmann & Son,  
Halifax, England.
- Pickles and Sauces**—  
The Proprietors of Potter's Perfect  
Pickles, Hyson-road, Bermondsey,  
London, S.E.
- Plate and Sheet Glass Manufacturers**  
(See Glass Manufacturers).
- Postage Stamp Merchants and Phila-  
telic Publishers**—  
Whitfield, King & Co., Ipswich.  
Foreign and Colonial Postage Stamps for  
Collectors. Publishers of Stamp Albums  
and Philatelic Catalogues. Estab. 1869.
- Pure Crystal Alum Sulphate of  
Alumina and Aluminoferric**—  
Peter Spence & Sons,  
Manchester Alum Works,  
Manchester.
- Road Materials**—  
Mountsorrel Granite Company, Limited,  
Mountsorrel, near Loughborough.  
Full Particulars and Prices on application.  
Tel. address: "Granite, Mountsorrel."
- Safes, Iron and Steel Doors**—  
Frederic Whitfield & Co.,  
20, Cheapside, London.  
Works: Oxford-street, Birmingham.
- Salt for the Table, the Bath and the  
Garden**—D. Bumsted & Co.,  
36, King William-st., London, E.C.
- Sanitary Potters**—S. H. Rowley,  
Swadlincote, near Burton-on-Trent.  
Sole Makers of the Patent "Wash-out"  
Closet. Makers of Wash-down Closets.  
Pedestal Closets, Lavatories, Sinks,  
Urinals, &c., of finest Quality.
- Seed Growers and Merchants**—  
Sutton & Sons, Reading.  
Seedsmen by Sealed Warrants to H.M. the  
Queen, and H.R.H. the Prince of Wales.  
Farm Seeds, Garden Seeds and Bulbs,  
specially selected and packed for all parts  
of the World. Full Price Lists free on  
Application.
- Shipping and Forwarding Agents**—  
Forster & Co.,  
Trevelyan-buildings, Corporation-  
street, Manchester, England.  
The Buying and Shipping of British  
and Foreign Merchandise of every descrip-  
tion undertaken on the most favourable  
terms. Correspondence invited.
- Soaps (Household, Toilet and Soft)**—  
Edward Cook & Co.,  
Bow, London, E.C.  
Contractors to H. M. Government.  
Makers of every description of Household,  
Toilet and Soft Soaps, and High-class  
Milled Perfumed Soaps.  
Tele. address: "Edward Cook, London."
- Steel Pen Maker**—  
W. Mitchell, 44, Cannon-street, E.C.,  
and Washington Works, Cumberland-  
street, Birmingham.
- Surgical Dressing Manufacturers**—  
Robinson & Sons, Limited,  
Wheat Bridge Mills, Chesterfield; and  
55, Fann-street, Aldersgate-street,  
London, E.C.
- Tanners**—  
P. & S. Evans & Co., Limited,  
Avonside Tannery, Bristol.
- Tile Manufacturers**—  
Craven Dunnill & Co., Ltd., Jackfield,  
R.S.O., Shropshire. Tiles of all kinds,  
Encaustic, Plain, Enamelled, Glazed,  
Majolica, Printed, Painted, Lustre,  
Ceramic Mosaics, Constructional Faience.  
London, 37, Maddox-street, W.
- Typewriters**—  
Remington Standard. (New Model.)  
All kinds of Typewriter Supplies.  
Wyckoff, Seamans & Benedict, Pro-  
prietors. 100, Gracechurch-street,  
London, E.C. Telephone No. 2464.
- Ventilator Manufacturers**—  
James Howorth & Co.,  
Victoria Works, Farnworth, near  
Bolton, and Manchester, England.
- Weighing Machines, Weigh-Bridges,  
&c., of all Descriptions**—  
Henry Pooley & Son, Limited,  
Albion Foundry, Liverpool, and 89,  
Fleet-street, London, E.C.  
Tel. Add.: "Pooley, Liverpool, or London."
- Wines, Spirits and Brandies**  
Morgan & Co., Hamburg.
- Wood Block Flooring**—  
Goddard & Sons, Patent Wood Block  
Flooring Works, Farnham, Surrey.

Date. Article. To whom lent. Returned.

Nov 2-97. Cawks  
Synch top - 2 Keps, 8 Whds, 1 gr. ret. 5 Whds - ret 1 Whd  
Cioffaldi. 5 yrs. (from 1897) ut 2 yrs. = 3.

1897-98



# Memoranda of Reference, &c.

As Addresses, Quotations, and other matters of Interest.

12/1800  
2150  
7-100

22/1800  
2150  
7-100



Friday Dec. 31. 1897

Put in concrete foundation for cement-vats —

1 SATURDAY [1-364] Circumcision. Bank Holiday, Scotland.  
Holiday Stock Exchange

2 SUNDAY—2 after Christmas [2-363]



3 MONDAY [3-362] Quarter Sessions Week

N. Bridge { cellar  
H. Bridge {  
Geo Bridge to Br. C. F. Lindeman  
(25 grs) 739 Gals. H. 1/5 = £52.6.11

Began to build rats - 4 day

J. C. Inayne 1 camp 1/6 -

John Wilkinson died.

4 TUESDAY [4-361]

Raton Grant & Co. £15- due P. N. pd.

Geo Bridge (to Br. shack to camp)  
H. Bridge ploughing  
H. Bridge (cellar)  
E. Thompson

Lindeman  
fr. on 14th. 7 grs - 2/1

J. C. Inayne - 1 camp 1/6

5 WEDNESDAY [5-360] Dividends due at Bank

Geo Bridge (fr camp)  
H. Bridge (ploughing)  
H. Bridge - (cellar)

2 Tarpanlins 2/1  
20 casks cement 12/10/0  
1 Bal. hoop Iron 8/6

6 THURSDAY [6-359] Epiphany. Twelfth Day

Geo Bridge to Br +  
H. Bridge (shimming)  
H. Bridge

J. Lynch & Co.  
701 Gals Shiaz 1/96 - 1/3 = £123.16.3

Recd from S. Corner £46-0-8 up to date

J. C. Inayne 1 camp 1/6

7 FRIDAY [7-358]

Geo Bridge (fr. Br.)  
H. Bridge (vineyard)  
H. Bridge (cellar)  
E. Thompson - (cellar)

N. Bridge  
10 sheets 7 ft. Iron 2/3 1.2.6  
14 " 6 " " 2/1 1.8  
4 lengths 15 in capping 1/6 6  
7 " O.G. Gutter 4 1/2 - 1/6 10.6  
6 sh. nails 2 1/2 - 1.3  
Screws & washers 2.6  
14 Screws & funnels 1.2  
£ 3 11. 11  
Freight on above 1/6 £ 3.13 5

E. Thompson - £1- on a/c -

8 SATURDAY [8-357] 6th 24th A.M. (Greenwich). Cambridge Lent  
Term begins. Fire Insurances expire

Geo Bridge 1/2 day - 2/1

St p. S. Corner  
1 cask Sulphur

9 SUNDAY - 1 after Epiphany [9-356]



10 MONDAY [10-355]

Cular

N. Bridge  
H. Bridge  
E. Thompson (court)

Iron =  $\text{Ct. } 50.0.10. - \text{E } 17/-$  17.1.6  
14 lbs screws  $5\frac{1}{2}$  6.5  
12.. washers  $2\frac{1}{2}$  2.6  
14.. nails 2  
7.. " 1  
7.. " 1  
8 Bolts & nuts 1.6  
17.15.11

11 TUESDAY [11-354] Hilary Law Sittings begin

N. Bridge pl orchard  $\frac{1}{2}$  day  
H. Bridge (cellar)  
E. Thompson (court)

freight on 5 cks. cement -  $\frac{1}{4}$  4/-  
" " 1 pel. air bricks  $\frac{1}{4}$  4/-

freight on Lindeman's 15 qrs  $\frac{1}{4}$  4/-  
11 shds  $\frac{1}{4}$  4/-

12 WEDNESDAY [12-353]

Lynch & Co. P.R. £ 25- due p.d.

N. Bridge (cellar)  
H. Bridge  
E. Thompson (court)

H. J. McDonald.  
2. Bullocks 40/- = £4.  
(one bullock died same day)

13 THURSDAY [13-352]

N. Bridge  
H. Bridge (cellar)

(ret.)

Cr S. Corner  $14/4$  which  
Le paid for our casks etc —

14 FRIDAY [14-351] Oxford Hilary Term begins

N. Bridge ~~cellar~~ cular, chipping etc.,  
H. Bridge (cellar)  
E. Thompson (court)  
Geo Bridge (h Br.)

J. C. Mague 1 camp —

15 SATURDAY [15-350] c 3h 44m P.M. (Greenwich)

Geo Bridge (fr. Br.)

J. Lynch & Co.  
462 Gals Pineau  $\frac{1}{3}$  = 28.17.6  
52 " Superior White  $\frac{1}{3}$  = 2.12. -  
205 " Advantage  $\frac{1}{3}$  = 10.5 -  
£ 41. 14. 6

(Cricket match)

16 SUNDAY — 2 after Epiphany [16-349]



17 MONDAY [17-348]

N. Bridge  
H. Bridge.

18 TUESDAY [18-347]

Geo Bridge 1/2 Br.,  
H. Bridge  
H. Bridge  
P. Thompson (court)

C. F. Lindeman  
22 qrs. 14 Hds — 897 Gals. H. 1/5 =  
\$63.10.9

19 WEDNESDAY [19-346]

J. C. Mayne. 1 camp 1/6-

Geo Bridge (Br.)  
H. Bridge  
H. Bridge  
P. Thompson (court)

A. G. Hatcher  
1 Tank 3/10-

4. 15 Hds (Incl.) 1/4

20 THURSDAY [20-345]

N. Bridge (cellar)  
H. Bridge ( " )

Contra

Recd fr. O. K. Young. 25.17.10  
63 Bps. C. Barley. 278 Buns 7/- \$27.16-  
100 Com sacks 4/- \$1.13.4  
freight 1.4  
Bun. Seed Com 3.6  
1.18.2  
25.17.10

Cr Geo Bridge-  
1/2 H Barley 13.18.0  
Less 1/2 Bap & fr. 14.4  
\$130.8

21 FRIDAY [21-344]

N. Bridge (cellar)  
H. Bridge (cellar)  
P. Thompson (court)

S. Corner  
230 ~~230~~ gals. wine 4/- \$3.16.8

22 SATURDAY [22-343] • 7h 25m A.M. (Greenwich)

H. Bridge  
H. Bridge  
P. Thompson (court)

P. R. Lill 1/9- for Wals  
C. White 1/8-  
\$15

finished Vals-

23 SUNDAY—3 after Epiphany [23-342]



JANUARY 1898

31 Days

24 MONDAY [24-341] Ramadan (Turkish Lent) begins

A. Bridge worked - Vet.

25 TUESDAY [25-340] Conversion of St. Paul

A. Bridge worked.

17 5- 4-5 Geo. Elwin road  
 85- 4-15 Geo. Mathew  
 19 5- 4-15  
 95

26 WEDNESDAY [26-339]

A. Bridge  
Geo. Bridge (6 Br.)J. Lynch & Co.  
84 9 Gals. Shing 1/- = £42.2

Pd Geo. Bridge £18.6.8 - up to date -

Ernest Hanson -  
3 months 6- per wk - 6/6 -

J. C. Drayne 1 camp 1/6.

JANUARY 1898

27 THURSDAY [27-338]

Geo. Bridge (6 Br.)  
A. Bridge (cellar)  
R. Thompson - (cellar)

Or Geo. Bridge  
 Barley (Philapp) 12.6  
 Kohler 7.9

£10.3 -

28 FRIDAY [28-337]

Lynch & Co. P. 7. £30. due -  
 A. Bridge worked (cellar)  
 R. Thompson (cellar) -

29 yrs. 3 Hds 7/4.

29 SATURDAY [29-336] 2h 33m P.M. (Greenwich)

E. Thompson worked - Paid E. Thompson 3/4

G. Thompson - 19 days 3/- = £2.17 -  
 Cash received

1.17.

30 SUNDAY - 4 after Epiphany [30-335]







7 MONDAY [38-327]

Geo. Elliott of-  
 H. Bridge of-  
 H. Bridge of-  
 Geo Bridge to Br.  
 V. Bridge 7/6

Bryan Vintage - Carrott & Locock's grapes  
 C. F. Lindeman  
 926 Gals term - 1/5 - £65.11.10

J. C. Inayne 1 camp

8 TUESDAY [39-326] Half Quarter Day

Carrott & Locock's grapes

H. F. H. Hollinshead sen.  
 2 Bap Wheat - 4.3.4 Less 1 lb  
 4 2.26 = 8.50 £3/9 - £1.13.1/2

9 WEDNESDAY [40-325]

H. Dillon - mending scales 10/-  
 800 Buckets Hermitage

Cellar ap-  
 9 Buckets 1/8 - 15  
 3 " 2/- 6  
 mending 2 funnels 1/3 2-6  
 Linned meal 1.8  
 £1.5.2

Geo Elliott  
 Geo Phillips  
 W. Bridge  
 H. Bridge  
 Alf. Bridge  
 Vic. Bridge  
 Andrew McGann  
 Geo Bridge (for H. M. D.)

Geo Elliott  
 Geo Phillips  
 H. Bridge  
 H. Bridge  
 Alf. Bridge  
 Geo Bridge (for Br.)  
 Vic. Bridge  
 J. McGann (for H. M. D.)

10 THURSDAY [41-324]

699 Buckets Hermitage

Transferred from S.aney to H. M. £442-12.3 9 exchange 4/6

Geo Elliott  
 Geo Phillips  
 W. Bridge  
 H. Bridge  
 Alf. Bridge  
 Vic. Bridge  
 A. McGann  
 Geo Bridge (for H. M. D.)

11 FRIDAY [42-323]

648 Madeira

Geo Elliott  
 Geo Phillips  
 H. Bridge  
 H. Bridge  
 Alf. Bridge  
 Vic. Bridge  
 A. McGann  
 Geo Bridge

Professor Blummo came -

648  
 265  
 383

500  
 525  
 1025  
 916  
 109

12 SATURDAY [43-322]

268 Madeira 1/2 day -

1 load pay. H -

Geo Elliott  
 H. Bridge  
 H. Bridge  
 Alf. Bridge  
 Vic. Bridge  
 A. McGann  
 Geo Bridge (for H. M. D.)  
 today drawing 1/4 of grapes

Bryan to rain during afternoon  
 poured all night

13 Sexagesima SUNDAY [44-321]

Poured all day



14 MONDAY [45-320] St. Valentine. ☾ 0h 35m A.M. (Greenwich)

No picking

Bt. p. J. F. M. Wilkinson  
15 Gals. Reinsling  $\frac{2}{6}$  = £ 1. 17. 6Geo. Elliott  
Geo. Phillips  
W. Bridge  
Alf. Bridge  
Vic. Bridge  
A. McGann  
Geo. Bridge  
Herb. Bridge (Mining Professor)

15 TUESDAY [46-319]

848 Hermitage

Geo. Elliott  
Geo. Phillips  
W. Bridge  
Alf. Bridge  
Vic. Bridge  
A. McGann  
Geo. Bridge (for H. M. D.)  
Herb. Bridge (for Professor)

16 WEDNESDAY [47-318]

807 Hermitage

Geo. Hollinshead  
1 Aride  $\frac{7}{6}$  - pd.

Cellar $\frac{9}{e}$ -	5 pronged Digger	3.3
	2 comb. Buckles $\frac{7}{8}$	5.4
	6 yds Accrants $\frac{1}{2}$	3.3
		<u>11. 10</u>

Professor Blumms went away

17 THURSDAY [48-317]

561 Hermitage -

H. Barrett. Comm. on Saloon  
Grant £15. + Porter £24-5-  
= £39.6Ben Kibble 424 Buckles  $\frac{17}{8}$  - pd.Geo. Elliott  
Geo. Phillips  
W. Bridge  
Alf. Bridge  
Vic. Bridge  
A. McGann  
Herb. Bridge  
J. Shurgood  
Geo. Bridge (for H. M. D.)  
R. Kibble (Mining Professor)

18 FRIDAY [49-316]

669 Hermitage -

Geo. Elliott  
Geo. Phillips  
W. Bridge  
Alf. Bridge  
Vic. Bridge  
A. McGann  
Herb. Bridge  
J. Shurgood  
Geo. Bridge (for H. M. D.)  
R. Kibble (Mining Professor)

19 SATURDAY [50-315]

570 Hermitage

Geo. Elliott  
Geo. Phillips  
W. Bridge  
Alf. Bridge  
Vic. Bridge  
A. McGann  
Herb. Bridge  
J. Shurgood  
Geo. Bridge  
R. Kibble (Mining Professor)

20 Quinquagesima SUNDAY [51-314] ● 7h 41m P.M. (Greenwich)



21 MONDAY [52-313]

P. Phillipp

~~Freight~~ Drawing 2-300 Gal. casks - 5/-

Freight on 300 Gal. casks (2) £1.2.4

A. Dose. Pyrmont. Sydney.

2 Casks - ~~312~~ 312 Gals. @ 6 $\frac{1}{2}$  = £16-18.0

Ren 15 £41.5.0.

22 Shrove TUESDAY [53-312]

523 Turnage - (finished)

Pd R. Carroll £38.10

23 Ash WEDNESDAY [54-311]

Cellar 4/-

Soda 2/- Dipper 2/-

Calico 2/8 = 6/8

Geo Elliott-  
Geo Phillipp  
W. Bridge  
Ally Bridge  
Vic Bridge  
A. McGann  
Herb. Bridge  
Geo Bridge (dampy Altho grapes)  
J. Shurwood  
R. Kettle

Geo Elliott-  
Geo Phillipp  
W. Bridge  
Ally Bridge  
Vic Bridge  
A. McGann  
Herb. Bridge  
J. Shurwood  
Geo Bridge (for h. m. p.)  
R. Kettle

Geo Elliott-  
Geo Phillipp  
W. Bridge  
Ally Bridge  
Vic Bridge  
A. McGann  
Herb. Bridge  
J. Shurwood  
Geo Bridge (for h. m. p.)  
R. Kettle

24 THURSDAY [55-310] St. Matthias, Ap.

Y. on Lynch's 3 thos  $\frac{1}{16}$  + 1 gr. muscat  $\frac{3}{4}$  5/2.  
Pd Wiseman for buying the above 5/-

J. Lynch &amp; Co.

30 Gals Muscat 4/- = £6. per

Innes &amp; Co.

Pd £10 mth Sydney ac.

Geo Elliott-  
Geo Phillipp  
W. Bridge  
Ally Bridge  
Vic Bridge  
A. McGann  
Herb. Bridge  
Geo Bridge (for h. m. p.)  
J. Shurwood  
R. Kettle

Posted Lambkin's deed

25 FRIDAY [56-309] RAM

Geo Elliott-  
Geo Phillipp  
W. Bridge  
Ally Bridge  
Vic Bridge  
A. McGann  
Herb. Bridge  
Geo Bridge (for h. m. p.)  
J. Shurwood  
R. Kettle

Geo Elliott-  
Geo Phillipp  
W. Bridge  
Ally Bridge  
Vic Bridge  
A. McGann  
Herb. Bridge  
Geo Bridge (for h. m. p.)  
J. Shurwood  
R. Kettle

26 SATURDAY [57-308]

R. Clough

3 Casks - 500 Gals @ 6 $\frac{1}{2}$  = 17/10 = £37.10.0

Vic. Bridge 18 days 4 $\frac{1}{2}$  = £2.5.0  
Geo Phillipp 16. 3/- = 48/-

27 SUNDAY - 1 in Lent [58-307] Ember Week



28 MONDAY [59-306] 11h 13m A.M. (Greenwich)

Lynch &amp; Co. P.N. £40 due -

756 Shiraz -

Pd March 12

Peter Phillip - Bumping 3-500 casks

for B. 15/-

Freight on 3-500 casks 12/9

R. Thompson £1. clq.

1 MARCH TUESDAY [60-305] St. David

612 Shiraz

Pd) A. King sen. - Mt. View -

27.4 cwt. 3 qrs white grapes @ 10/- = £6. 14. 3

3. 8 " 2. Vermutapf @ 10/- = 15. 8. 3

£22. 2. 6

J. Looock 7 cwt.

7. 7. 2. Verm. 100/- = 36. 17. 6

3 2-0-14 White 80/- = 12. 8. 6

Pd. £49. 6 -

2 WEDNESDAY [61-304] Ember Day

Finished Vintage

335 Shiraz

So. Bridge 769 Buckets 1. 12. 0 1/2

108 for A.H. 4. 6

Vera " 31 Buckets 1 3 1/2

£1. 17. 10.

Picking £16. 18. 2

Geo Elliott -  
H. Bridge  
Aly Bridge  
A. McGann  
A. B. Bridge  
J. Thurgood  
R. KibbleGeo Elliott  
H. Bridge  
Aly Bridge  
A. McGann  
A. B. Bridge  
J. Thurgood  
R. KibbleGeo Elliott -  
H. Bridge  
Aly Bridge  
A. McGann  
A. B. Bridge  
J. Thurgood  
R. Kibble

3 THURSDAY [62-303]

Geo Elliott - (cellar)

H. Bridge ( " )

R. Thompson (court)

Pd Herb. Bridge £10. 1. 8.

29 days @ 3/4 4. 16. 8

21 " @ 5/- 5. 5. 0

£10. 1. 8

Mar 1<sup>st</sup> Pd A. McGann 19 days @ 5/- £4. 15. 0

" J. Thurgood 12 1/2 " 3/- £3. 2. 6.

R. Kibble 2 wks @ 10/- £1. - -

4 FRIDAY [63-302] Ember Day

House Insurance due - £2. 17. 9 £3. 4. 9 - Bonus 7/-

Geo Elliott (cellar)

H. Bridge ( " )

R. Thompson (court)

Aly Bridge - 18 days @ 5/- £4. 10. 0

Geo Phillip 16 " 5/- £4. 0. 0

752  
612  
335  
17032. 17. 9  
7  
3. 11. 9

5 SATURDAY [64-301] Ember Day

Geo Elliott -

H. Bridge

R. Thompson (court 2 days cellar 2 days)

6 SUNDAY - 2 in Lent [65-300]



7 MONDAY [66-299]

Geo. Elliott  
H. Bridge

8 TUESDAY [67-298] ○ 9h 29m A.M. (Greenwich)

Geo Elliott  
H Bridge (pl. )  
R. Thompson (court)  
Geo Bridge (to Br.)

C. F. Lindeman  
643 Gals ~~Herm.~~  $\frac{1}{5} = £45.10.11$

The J. Lynch & Co.  
338 Gals Shiraz  $\frac{1}{2} = £16.18.$   
(Sent wrong invoice £14.12.0)

Pd J. Dillon £45.12.6  
9 Lons. 2. ewt 2 qrs. Herm. 100/-

Jonayne 1 camp/6

9 WEDNESDAY [68-297]

Geo Elliott  
H Bridge  
Geo Bridge (to Br.)  
R. Thompson (court)

10 THURSDAY [69-296]

Geo Elliott  
H. Bridge  
R. Thompson (court) -

Geo Elliott  
28 days @ 4/- = £88.0

11 FRIDAY [70-295]

No work

H. Collins wages £1.00

Cricket-Match Wilkenson's cullars & Ivanhoe & B. E.

12 SATURDAY [71-294]

R. Thompson (court)

Recd from C. F. Lindeman £321.11.8. payment up to 50c.15  
Pd P. Philipp 15/-

13 SUNDAY—3 in Lent [72-293]



14 MONDAY [73-292]

H. Bridge worked (dipping stumps)  
H. Bridge & day (dipping Papa)

J. Woodland  
8Y. 3 chf. 1 q. 1/2 m. 100/£40.16.3

15 TUESDAY [74-291] 7h 48m A.M. (Greenwich)

H. Bridge  
R. Thompson

16 WEDNESDAY [75-290]

R. H. Bridge 8/19/- up to date.

H. Bridge  
R. Thompson

17 THURSDAY [76-289] St. Patrick

no work -

18 FRIDAY [77-288]

R. Thompson (Court + garden)  
H. Bridge & day (cleaning tank)

19 SATURDAY [78-287]

R. Thompson (odd jobs)  
H. Bridge

R. Thompson owes 10/-

Recd fr. J. Lynch. £10.18.0 chg -

20 SUNDAY—4 in Lent [79-286]



21 MONDAY [80-285]

W. Bridge (dipping roots).

14<sup>ab</sup>

$$\begin{array}{r} 19 \times 6 \\ \hline 350 \\ 290 \\ \hline 64 \\ \hline 128 \\ \hline 256 \\ \hline 106 \\ \hline 362 \end{array}$$

29  
24  
5-3

22 TUESDAY [81-284] • 8h 37m A.M. (Greenwich)

W. Bridge - dipping roots

23 WEDNESDAY [82-283]

W. Bridge - dipping roots

Pa Clough 36.11.3 for Casks

Pa John Slade f 36. for grapes -  
" W. King f 46.10.

24 THURSDAY [83-282]

W. Bridge (carting manure)  
Geo Bridge (to Br.)

J. Y. Tulloch  
Reaping 2<sup>1</sup>/<sub>2</sub> ac. f 1.

Pa Geo. Bridge - 9.1.10. up to date  
Reaping 1<sup>1</sup>/<sub>2</sub> -

(W. Barnett - f 6.18.0)  
Com. on Lunch

H Collins Cash f 1

J. C. Mayne 2 Cams - 3/-

25 FRIDAY [84-281] Annunciation V. Mary. Lady Day. Quarter Day

C. F. Lindeman 93.8.7  
1319 Gals. H - 1/5 - ~~27~~ 8-7

Geo. Bridge (fr. Br.) (buck for. Stanhol)  
W. Bridge  
400

10

26 SATURDAY [85-280] Cambridge Lent Term ends

Geo Bridge  
1 Pig - 7/9

S. Hipwell  
2 Pigs 7/9 = 15/6

27 SUNDAY - 5 in Lent [86-279]

20000



28 MONDAY [87-278]

3.13

750

29 TUESDAY [88-277]

166.15

1000  
1000  
600  
2600

20000 = 10000

13  
133

166  
1166  
200  
1866

12 840000  
24 33324  
188134

30 WEDNESDAY [89-276] 7h 40m A.M. (Greenwich)

1000  
24 = 1200  
300  
1500  
1000

31 THURSDAY [90-275] Fox Hunting ends

~~A. N. Leaver~~  
Skinner's Barley 2 cent. 0.9. 15 lbs net (50 lbs  
to the bushel) - 4 Buss. 39 lbs c. 3/4 = 14/4

1 APRIL FRIDAY [91-274]

2 SATURDAY [92-273] Oxford Hilary Term ends

Sent to Barrett chq. 1/13/9 being  
balance due as com. on Lynd's wine

3 Palm SUNDAY [93-272]



4 MONDAY [94-271] Quarter Sessions Week

*no date* A. G. Mitcheson  
1 cask Cement 12/6 freight 9/-

5 TUESDAY [95-270] Dividends due at Bank

H. Collins 12/- cash -

6 WEDNESDAY [96-269] O 9h 20m P.M. (Greenwich). Hilary Law Sittings end

He went to Sydney

7 THURSDAY [97-268]

no work

cellarage by dr. Calves 4/- 2/-

8 Good FRIDAY [98-267]

no work

800 ft H.B. 10

135 Sheds

105 plates

50 Bathing

56 Raffles

15 Ridgeboard

1161 = 48

84

21

105

21 1/5

105

105

105

105

105

105

105

105

105

105

105

105

105

9 SATURDAY [99-266] Fire Insurances expire

no work

10 Easter DAY [100-265]



11 Easter MONDAY [101-264] Bank Holiday

*No work*

12 Easter TUESDAY [102-263]

*No work**He returned from Sydney*13 WEDNESDAY [103-262] ☾ 2h 28m P.M. (Greenwich).  
Oxford Easter Term begins*Racking*

14 THURSDAY [104-261]

*Pa J.C. Inayne  
2.12.6 for Camps  
up to date**N. Leaver  
1 pr. Swinglikee Irons - 7/6*

15 FRIDAY [105-260]

16 SATURDAY [106-259]

17 Low SUNDAY—1 after Easter [107-258]



18 MONDAY [108-257] Easter Law Sittings begin. Cambridge Easter Term begins

19 TUESDAY [109-256]

Rec<sup>d</sup> from C. F. Lindeman Chq. £280.1.6 - payment to Jan 3-

Pa J. J. McDonald £289.16 - up to date

Mr. Lynch came.

20 WEDNESDAY [110-255] • 10h 21m P.M. (Greenwich)

21 THURSDAY [111-254]

Mr. Lynch left.

22 FRIDAY [112-253]

Walter Joass paid his interest for year - 30/- for £25.

A. Collins Cash 16/-

23 SATURDAY [113-252] St. George

24 SUNDAY—2 after Easter [114-251]



25 MONDAY [115-250] St. Mark, Evangelist

*Sent by  
Mr. Comer's team*  
J. Lynch & Co  
531 Gal. Light Red 198. C. 11  
£24.6.9

*Sent Lynch. 8 whos. 198. Ind.*

26 TUESDAY [116-249]

*Oly & Russell*  
379 B. George St

*W. W. Donald*

27 WEDNESDAY [117-248]

*Show-*

*20*  
*1 1/2*  
*3 1/2*  
*15*  
*300*  
*100*  
*2220*  
*40000*  
*1600*

28 THURSDAY [118-247]

*Show-*

29 FRIDAY [119-246] 2h 5m A.M. (Greenwich)

*Show-*

*W. Bridge - 1 knife 7/6*

30 SATURDAY [120-245]

*Barley - 66 0 19 - 27 Bags / 3lbs each.*  
*146 Bns. 30 lbs. - (reckoned 146 1/2 Bns) @ 5/6 = £18. 6. 3.*

1 MAY SUNDAY—3 after Easter [121-244] SS. Philip and James, App.



2 MONDAY [122-243] Holiday, Stock Exchange and Bank Holiday, Scotland.  
Royal Academy opens

Planted hyacinths in glasses

3 TUESDAY [123-242]

4 WEDNESDAY [124-241]

5 THURSDAY [125-240]

J. Collins Cash £1.

6 FRIDAY [126-239] O 6h 34m A.M. (Greenwich)

7 SATURDAY [127-238]

Sent Land Tax 8/5 & fine 112 = 9/4 - 2 Pairs notes 2/6 ea. 14/-

8 SUNDAY—4 after Easter [128-237]



9 MONDAY [129-236] Half Quarter Day

*Began Racking*

10 TUESDAY [130-235]

*Racking*

11 WEDNESDAY [131-234]

*Racking*

12 THURSDAY [132-233] c 9h 36m p.m. (Greenwich)

*Racking*

13 FRIDAY [133-232]

*Racking*

14 SATURDAY [134-231]

*Racking -*

*Recd fr. P. Cioffaldi  
£15.18- by cheque.*

15 Rogation SUNDAY [135-230] Whitsunday. Scottish Quarter Day



16 MONDAY [186-220] Rogation Day

Racking.

17 TUESDAY [187-228] Rogation Day

H. Barrett. £1-11-10. Comm.  
on Cio's £15-18-0

6.4

18 WEDNESDAY [188-227] Rogation Day

H. Bridge worked (pl.) Geo Bridge £15-02-4  
P. H. Hollinshead 7/13. Wheat

Collins £1.

19 THURSDAY [189-226] Ascension Day

H. Bridge worked (pl.)

Elliott Bros -  
3 cwt gypsum 4/- 12/-  
freight 7/2 7-1  
19-1

J. Lynch & Co. L. on 8 Hds 1 gr. 2 Kip. 4/7.

20 FRIDAY [140-225] • 0h 58m P.M. (Greenwich)

H. Bridge worked (pl.) -

1. 11. 10

21 SATURDAY [141-224]

C. J. McGann 11/8. 1/2 casks gypsum

Lynch & Co. P. H. £50. due - pd.

Recd. p. C. F. Lindeman  
£222-16-10.

H. Bridge worked (pl.)

Recd. p. B. Hollinshead Jr. Berain's chq. 13-13-9. gave him 15/- 13-13-9  
15  
12-18-9

22 SUNDAY after Ascension [142-223] Mohammedan Year 1316 commences



23 MONDAY [143-222]

N. Bridge worked (pl.)

166 Wall Plates  
168 Beam  
440 Rafter  
240 Bathus  
340 W. Boards

3-6  
4  
7-6  
1-6  
9

Take by acorns 13 5 4  
13 0 Bathus  
14 8 4  
4 3  
15 2 7

24 TUESDAY [144-221] Queen Victoria born, 1819

Prage board

25 WEDNESDAY [145-220]

James Lambkin's interest ~~to £3-10-0~~ 7 percent. on £42-16-0 = £1-10-0 *pl. July 20.*

N. Bridge worked pl.

N. Bridge Cash. 2/5/-

26 THURSDAY [146-219]

N. Bridge worked pl

27 FRIDAY [147-218] Easter Law Sittings end. Oxford Easter Term ends

N. Bridge worked pl

28 SATURDAY [148-217] 5h 14m p.m. (Greenwich).  
Oxford Trinity Term begins

N. Bridge worked pl

29 Whit SUNDAY [149-216] Ember Week



30 Whitsun MONDAY [150-215] Bank Holiday

~~James Gillard's interest due £6-~~

H. Bridge worked (pl.)

31 Whitsun TUESDAY [151-214]

H. Bridge worked (pl.)

J. Collins - Cash 5/- balance of a/c 11/- = 16/- ✓

1 JUNE WEDNESDAY [152-213] Ember Day

H. Bridge worked (pl.)

2 THURSDAY [153-212]

H. Bridge worked (pl.)

3 FRIDAY [154-211] Ember Day

Referendum Day

H. Bridge worked (pl.)

4 SATURDAY [155-210] Ember Day. 2h 11m P.M. (Greenwich)

H. Bridge worked (pl.)

5 Trinity SUNDAY [156-209]



JUNE 1898

30 Days

6 MONDAY [157-208] Trinity Law Sittings begin

W. Bridge worked (pl.)

W. Bridge - 1 set horse shoes 1/4

7 TUESDAY [158-207]

No work (wet.)

8 WEDNESDAY [159-206]

James F. Gellard's interest due \$6 pd.

W. Bridge worked (mending fence between us &amp; Fleming)

JUNE 1898

30 Days

9 THURSDAY [160-205] Corpus Christi

W. Bridge worked (fencing)

Dr Collins 10/- cash -

25.00

10 FRIDAY [161-204]

W. Bridge worked (fencing)

11 SATURDAY [162-203] St. Barnabas. 6h 4m A.M. (Greenwich)

W. Bridge worked Clearing  
C. F. Lidecuran pd £93.8.7.

12 SUNDAY - 1 after Trinity [163-202]

59  
20) 336  
11.16



JUNE 1898

30 Days

13 MONDAY [164-201]

14 TUESDAY [165-200]

Sent Lindeman  
 Samples  
 Red No 2, 9415-  
 White No 242 Reising  
 do No 8 Madard  
 do No 9 Pinot

15 WEDNESDAY [166-199]

J. Thome - blacksmithing 2/-

Geo. Bridge - 1 Horse (The Trus) 7/-  
 Bt. J. G. Bridge - 1 Subsoiler 2/10/-

JUNE 1898

30 Days

16 THURSDAY [167-198]

17 FRIDAY [168-197]

53000  
 45000  
 80000  
 45000  
 35000  
 20000  
 20000

18 SATURDAY [169-196]

Post Lynchis P. h.

19 SUNDAY—2 after Trinity [170-195] • 4h 19m A.M. (Greenwich)



20 MONDAY [171-194] Queen's Accession, 1837

H. Bridge worked - (pl.)

21 TUESDAY [172-193] Proclamation, Queen Victoria

Lynch & Co. P. K. £30. ~~due~~ pd

No work

22 WEDNESDAY [173-192]

No work

23 THURSDAY [174-191]

H. Bridge worked (fencing)

Road cheque  
To 5. Debyer. 12. 5. 6  
3. " 18. 17. 3  
Matthens 9  
£40. 2. 9

H. Collins Cash £1

Began pruning -

24 FRIDAY [175-190] St. John Baptist. Midsummer Day. Quarter Day.  
Cambridge Easter Term ends

H. Bridge worked (fencing)

~~4. 16~~  
12. 5. 6  
18. 17. 3  
31. 2. 9

25 SATURDAY [176-189]

H. Bridge (pruning)  
~~But~~ H. Bridge cutting logs 4/-

26 SUNDAY—3 after Trinity [177-188]



27 MONDAY [178-187] 4h 54m A.M. (Greenwich). Quarter Sessions Week

N. Bridge pruning  
Geo Bridge loading logs 4/-  
S. Corner (Rhine (1 dog))

28 TUESDAY [179-186] Coronation of Queen Victoria, 1833

J. Bridge pruning 30 a/- fencing 50 a/-  
Geo Bridge (to Cessnock with log)

29 WEDNESDAY [180-186] St. Peter, Ap.

N. Bridge worked - pr

~~Geo Bridge worked~~

~~Geo Bridge worked~~

30 THURSDAY [181-184]

N. Bridge worked pr

1 JULY FRIDAY [182-183]

N. Bridge worked pr

2 SATURDAY [183-182]

N. Bridge worked pr

Road money

pa G. Elliott 4-5  
" G. Matthews 4 15  
9.00

3 SUNDAY—4 after Trinity [184-181] 9h 12m P.M. (Greenwich)

35  
9  
315  
18  
333  
999  
880  
1770

200

5 3/4 3 4/5  
16 1/4  
15 3/4  
15

3 4/5  
13 4/5  
15



4 MONDAY [185-180] Declaration of American Independence

H. Bridge (ps.)

5 TUESDAY [186-179] Dividends due at Bank

(H. Bridge ps.)

Estate of Grandchildren  
Commissioners of Taxation  
1897 Tax - £54.5.3  
Extra for - 96 . 8.14.10  
C<sup>d</sup> Fine unmet - 15.11

8.14.10  
15.11  
7.15.11

C<sup>d</sup> in Ch<sup>r</sup> Russell's ap. 15/11

6 WEDNESDAY [187-178]

H. Bridge ps.  
H. Bridge 1/2 day (pl. hill paddock)

H. Collins f3. cash

7 THURSDAY [188-177]

H. Bridge ps.  
H. Bridge (pl. hill)

8 FRIDAY [189-176]

H. Bridge (ps.)  
H. Bridge (pl. hill)

Caldwell's Co. - Dappa -  
Send samples (pts.) with fuel particulars  
of - Casks  
4-12. + 3 Reeling  
7-2 + 22 Hermitage

Messrs. Gosch &amp; Caldwell here -

9 SATURDAY [190-175] Oxford Trinity Term ends. Fire Insurances expire

H. Bridge (ps.)  
H. Bridge (pl. hill)

10 SUNDAY - 5 after Trinity [191-174] c 4h 43m p.m. (Greenwich)



11 MONDAY [192-173]

H. Bridge (pr.)  
 Geo Elliott  $\frac{1}{2}$  day (pr.)  
 H. Bridge (pl. hill)

James & Co pa £10 into Sydney a/c.

12 TUESDAY [193-172]

H. Bridge (pr.)  
 Geo Elliott (pr.)  
 H. Bridge (pl. hill)

Recd from Geo Hollinshead £5-

13 WEDNESDAY [194-171]

H. Bridge (pr.)  
 Geo Elliott (pr.)  
 H. Bridge (pl. hill)  
 Geo Bridge (log)

14 THURSDAY [195-170]

H. Bridge (pr.)  
 Geo Elliott (pr.)  
 H. Bridge (pl. hill)  
 Geo Bridge (t. Cessnock)

15 FRIDAY [196-169] St. Swithun

H. Bridge  
 Geo Elliott } pr -  
 H. Bridge (pl. hill)

16 SATURDAY [197-168]

H. Bridge (pr.)  
 Geo Elliott (pr.)  
 H. Bridge (pl. hill)

17 SUNDAY—6 after Trin [198-167]



18 MONDAY [199-166] • 7h 47m P.M. (Greenwich)

H. Bridge (ps.)  
Geo. Elliott (pl.)  
H. Bridge (pl. hull)

9 Simpson 4 Pgs  $\frac{1}{6}$  -  $\frac{1}{10}$

cr. h. m. 208.19  
" 2nd. 305.3.2  
5573.4.11  
68 - 1  
596.5

for 24 Russell  
56.5.3.  
8.14.10  
563 0.1

19 TUESDAY [200-165]

Geo Elliott (ps.)  
H. Bridge (pl.)  
Austin Bridge (chip)  
H. Bridge (pl. hull)

15/ - C. Phillips  
10 Hds. 28 Gs p Br  
Height - Train  $\frac{9}{2}$  unloading  $\frac{1}{6}$

20 WEDNESDAY [201-164]

Geo Elliott (ps.)  
H. Bridge (pl.)  
Austin Bridge (chip)  
H. Bridge (pl. hull)

21 THURSDAY [202-163]

Lynch & Co. P. N. £50. ~~the~~ pd.

H. Bridge 2 day (driving Prop)  
Geo. Elliott (ps.)  
H. Bridge (pl.)  
Austin Bridge (chip)

H. Bridge  
£2-3.4 up to date

Prof. Blumscame

22 FRIDAY [203-162]

Geo. Elliott (ps.)  
H. Bridge (pl.)  
Austin Bridge (chip)  
Geo. Bridge (to Braintree)  
Vic. Bridge ( " " )

J. C. Mayner 1 camp  $\frac{1}{6}$

23 SATURDAY [204-161]

Geo Elliott ps.  
H. Bridge pl.  
Austin Bridge (chip)  
Geo. Bridge (to Br.)  
Vic. Bridge ( " " )

C. F. Lindeman  
486 Gals. Madeira  $\frac{1}{2}$  = 45.17.0  
949 " Herm.  $\frac{1}{2}$  = 55.7.2  
1435  
£101.4.2

24 SUNDAY—7 after Trinity [205-160]



**JULY 1898**

## 31 Days

**25 MONDAY** [206-159] St. James, Ap.

Les Elliott (pr)  
L. Bridge (pr)  
Austin Bridge (chip)

**26 TUESDAY** [207-158] » 1h 40m P.M. (Greenwich)

Geo. Echolt (pr)  
Dr. Bridge (" )  
Austin Bridge (chip)

Amishi Bhoj - 7 days  $0\frac{3}{4}$  = £1, 3, 4

Ernest Hanson's money ~~due~~ 6 months @ 8<sup>d</sup> per wk =  $\frac{8}{4}$  17/4 pa.

**27 WEDNESDAY** [208-157]

Geo. Elliott pr.  $\frac{1}{2}$  day  
N. Brage pr.

## 31 Days

**JULY 1898**

**28 THURSDAY** [209-156]

~~\_\_\_\_\_~~

L. Bridge

~~Geo. Elder~~  
W. Bridge  
Austin Bridge pointing stakes  $\frac{1}{2}$  day —

29 FRIDAY [210-155]

Geo Elliott & pruning  
St. Bridge,  
Austin Bridge-Work.

R. Bridge  
Cash 10/-

Clipped Glass eye -

$$\begin{array}{r} 264 \\ \times 4 \\ \hline 104 \end{array}$$
  
$$\begin{array}{r} 263 \\ \times 4 \\ \hline 1052 \end{array}$$
  
$$\begin{array}{r} 263 \\ \times 4 \\ \hline 1052 \end{array}$$
  
$$\begin{array}{r} 263 \\ \times 4 \\ \hline 1052 \end{array}$$

30 SATURDAY [211-154]

Pa. J. de Buyer

Road money £ 3-2-9.

Geo. Elliott (pr)  
 A. Bridge (pl 1 day - pr 1/2 day)  
 Austin Bridge (cutting cuttings) J. Tan

J. Lambkin p.d. £1-10-0. interest due 25 May.

Mr. C. F. & Mr. A. J. Lindeman here -

**31 SUNDAY**—8 after Trinity [212–153]

Geo Elliott  
15 days running  
in July



1 MONDAY [213-152] Lammas Day. Scottish Quarter Day. Bank Holiday.  
Royal Academy closes

Geo. Elliott (pr)  
H. Bridge (pr)  
Austin Bridge (pointing stakes - cutting cuttings)  
Geo Bridge (drawing stakes) 4/-

2 TUESDAY [214-151] O 4h 29m A.M. (Greenwich)

Geo Elliott (pr)  
H. Bridge (pr)  
Geo. Bridge (drawing stakes) 4/-  
Austin Bridge (pointing stakes)

3 WEDNESDAY [215-150]

Geo Elliott 1/2 day pr (Started to plant vines)  
H. Bridge pr  
Austin Bridge pointing stakes 1/2 day, planting 1/2 day  
Geo Bridge (planting young vines)

4 THURSDAY [216-149]

Geo Elliott (planting) pegging out -  
H. Bridge (pr)  
Austin Bridge (planting)  
Geo. Bridge  
Vic Bridge 1/2 day (laying stakes)

$\frac{3}{4}$  3)40  
3)4 (1.3  
 $\frac{3}{10}$   
9  
10

5 FRIDAY [217-148]

Geo Elliott - pegging  
Geo Bridge { planting  
H. Bridge {  
Austin Bridge (pointing stakes)

6 SATURDAY [218-147]

Geo Elliott (pegging)  
H. Bridge  
Geo Bridge { planting  
Austin Bridge pointing stakes -

7 SUNDAY—9 after Trinity [219-146]



8 MONDAY [220-145]

Geo Elliott pepping out.  
 H. Bridge  
 Geo Bridge } planting  
 Austin Bridge }

9 TUESDAY [221-144] C 6h 13m A.M. (Greenwich)

H. Bridge  
 Geo Bridge  
 Aust. Bridge  
 John Laafe  
 R. Laafe - }

Pd. H. Bridge £ 4.12.0

10 WEDNESDAY [222-143]

H. Bridge digging Cuttings Pd. H. Bridge up to date  
 Geo. Bridge planting £ 3.12.6  
 Aust. Bridge planting  
 Alf. Bridge pointing Stakes ½ day planting ½ day  
 J. Laafe planting  
 R. Laafe planting  
 J. Stuart ½ day cutting Cuttings  
 J. Stuart ½ day planting  
 Joe Bridge planting  
 Jim digging Cuttings ½ day planting ½ day

11 THURSDAY [223-142] Half Quarter Day

Geo Bridge drawing Stakes ½ day  
 H. Bridge Pt  
~~Aust. Bridge~~ ½ day planting  
 Alf. Bridge ½ day planting  
 J. Laafe ½ day planting  
 W. Laafe ½ day planting  
 J. Stewart ½ day planting  
 E. Stewart ½ Cutting Cuttings

12 FRIDAY [224-141] Grouse Shooting begins. Trinity Law Sittings end

Geo Bridge ½ day (pepping)

Transferred 453-7- to H. Br.

J. Martin &amp; Co. 11/- 2 shares - sent £1 - leaving 9/- to Cr.

A. Bridge 1 share 5/6-

13 SATURDAY [225-140]

Geo Bridge ½ day planting ½ day drawing Stakes  
 Austin Bridge planting  
 R. Laafe do  
 Alf. Bridge do  
 H. Collins do

14 SUNDAY - 10 after Trinity [226-139]

J. Laafe ½ day do  
 J. Bridge worked do  
 Geo Elliott pepping



15 MONDAY [227-138]

Geo Bridge  
 Alf Bridge  
 H. Bridge  
 Austin Bridge  
 J. Stewart

planting vines

L. Lafe

R. Lafe

E. Stewart

digging cuttings

V. Bridge

worked

L. Bridge

planting

Geo Elliott

1/2 day pegging

16 TUESDAY [228-137]

Alf Bridge

planting

H. Bridge

as

Austin Bridge

as

E. Stewart

as

L. Lafe

as

R. Lafe

as

Geo Bridge

1/2 day pl 1/2 day drawing stakes

J. Stewart

1/2 day pl 1/2 day driving stakes

V. Bridge

cutting cuttings

L. Bridge

pegging. planting

17 WEDNESDAY [229-136] • 10h 35m A.M. (Greenwich)

J. Lafe

Austin Bridge

planting

R. Lafe

Geo Bridge

E. Stewart

planting

H. Bridge

J. Stewart

pegging &amp; drawing stakes

Geo Elliott

V. Bridge

cutting cuttings

L. Bridge

planting

Pd R. Lafe 6 1/2 days 4/- 1.6.0

J. Lafe 6 " " 1.4.0

young vines

4b

18 THURSDAY [230-135]

Alf Bridge

V. Bridge

H. Bridge

Austin Bridge

J. Stewart

E. Stewart

H. Collins

Geo Bridge

L. Bridge

planting

1/2 day pl 1/2 drawing stakes

H. Sharp  
 Stakes £1-19.6

19 FRIDAY [231-134]

Geo Bridge

Alf Bridge

Austin Bridge

H. Bridge

V. Bridge

J. Stewart

E. Stewart

planting

H. Collins stopped work.

Pd J. Stewart 6 days 4/- 1/4/-  
 E. Stewart 6 " 1/4/-

20 SATURDAY [232-133] Black Game Shooting begins

Geo Bridge

Austin Bridge

V. Bridge

1/2 day

worked

worked

Pd Alf Bridge 7 1/2 days 4/- 1/10/-

Young vines

21 SUNDAY—11 after Trinity [233-132]

Lynch &amp; Co. P. N. £45. due

" " " £15. "

Pd  
 Pd



22 MONDAY [234-131]

Austin Bridge Cuttings  
 Geo " "  
 Vic " "

Geo Elliott.  
 25 days @ 5/- 6/5/-

Harry Collins went to the Hospital.

23 TUESDAY [235-130]

Austin Bridge } Cuttings  
 Geo " "  
 Vic " "  
 W. Bridge ps -

24 WEDNESDAY [236-129] St Bartholomew. Ap. 8h 32m P.M. (Greenwich)

Austin Bridge } Cuttings  
 Geo " "  
 Vic " "  
 W. Bridge ps -

25 THURSDAY [237-128]

Austin Bridge }  
 Geo " } Cuttings  
 Vic " }

Sent Geo Hollinshead for

26 FRIDAY [238-127]

Austin Bridge }  
 Geo " } Cuttings  
 Vic " }

27 SATURDAY [239-126]

Austin Bridge }  
 Geo Bridge  $\frac{1}{2}$  day } Cuttings  
 Vic "  $\frac{1}{2}$  " }

28 SUNDAY—12 after Trinity [240-125]

Sent Alex Forbes £100 @ 6% —  $\frac{1}{2}$  party payments.

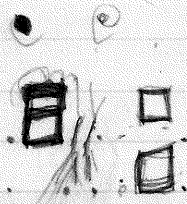


29 MONDAY [241-124]

N. Bridge  
Ant. Bridge

30 TUESDAY [242-123]

N. Bridge  
Ant. Bridge



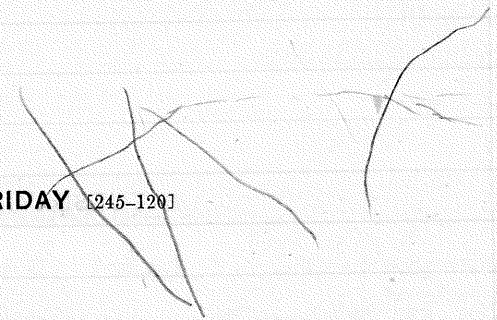
31 WEDNESDAY [243-122] • 0h 51m P.M. (Greenwich)

31.  
Pd. Geo. Bridge 22.169 - up to date

80  
10  
90  
15  
105

1 THURSDAY [244-121] Partridge Shooting begins

2 FRIDAY [245-120]



24 1/2  
22 1/2  
2 1/2  
108 81

3 SATURDAY [246-119]

94  
14.10

4 SUNDAY—13 after Trinity [247-118]



**5 MONDAY [248-117]**

L. Brage worked (cellar)  
Austin Brage 1  $\frac{1}{2}$  day

**6 TUESDAY [249-116]**

Mr. Bridge worked (cellar,

S. Corner  
9 Gummy Bags - 42 3/-

**7 WEDNESDAY** [250-115] C 10h 51m P.M. (Greenwich)

Tr. Bridge cellar -  
Geo Bridge h Br -

C. F. Linds

Pa / Geo Brage  
to Barley 49.2.6

J. C. Mayne 1 camp. 1/6-

**8 THURSDAY [251-114]**

N Bridge pl.  
Geo Bridge p. Be.

114] C. 7. Sunderman  
843 Gals. Alcoh  $\frac{1}{2}$  49.3.6

C.F.I.  
Twyf. - 44 gns. 3 hds. - 9.2.  
Unloading by Dpt.  $\frac{1.3}{10.5}$

St. C.  
5 Ads  $\frac{2}{6}$  -

Pa R. King - 2.19.6 for  
cutting cuttings <sup>53/-</sup> stakes

**9 FRIDAY** [252-113]

Mr. Bridge worked for

113] Pa h Bridge up h  
8th ~~ms. 406~~ f 6.0.2

$$\begin{array}{r} 35 \\ 600 \\ \hline 518.4 \end{array}$$

$$\begin{array}{r} 119.6 \\ 20 \overline{) 3912} \\ \underline{3912} \\ 0 \end{array}$$

**10 SATURDAY [253-112]**

N. Bridge pl.  
Austin Bridge (cellar).

$$\begin{array}{r} 36 \\ 3 \overline{) 108} \\ \underline{90} \phantom{0} \\ 180 \\ \underline{180} \\ 0 \end{array}$$
$$\begin{array}{r} \cancel{24} \\ 1.4.6 \\ \underline{20} \\ 24 \\ \underline{12} \\ 294 \\ \underline{204} \\ 42 \end{array}$$

**11 SUNDAY**—14 after Trinity [254-111]



12 MONDAY [255-110]

H. Bridge pl.

Pa Austin Bridge  
\$5.18.14 up to date

13 TUESDAY [256-109]

H. Bridge pl  
Geo " 1/2 Bs -

C. F. Lindeman  
974 Gals. term 1/2  
\$56.16.14

A. Y. Hatcheson. Freight on 2 Bags Lime 1/2 -

Freight on 7 casks Cement - 3 casks sulphur, 3 Bags Empty sacks for H. M. 4/11

J. C. Mayne 1 camp.

14 WEDNESDAY [257-108]

H. Bridge pl.  
Geo Bridge for Bs -

J Kohler  
Cwt galls Corn  
3. 3. 16  
Less 6 Bas. lbs  
3. 3. 10 = 7. 38 c 2/2 = 16.10. -

J Kohler 2 gals wine 1/4 = 2.6

15.12  
1.11  
14.01  
19.04

15 THURSDAY [258-107]

H. Bridge pl  
H. McCarthy pl -

16 FRIDAY [259-106] • 0h 10m A.M. (Greenwich)

See Oct. 15

H. Bridge pl  
H. McCarthy pl

O. K. Young  
33 Bags Corn - 3. 10. 1. 1/2 lbs  
165 lbs. for Bags = 218 Bus. @ 1/2 = 11. 12. 4  
217 Bus. 1/2 = 11. 10. 2

O. K. Young  
1 cwt S. R. Photos 11. 6  
1 " B. B. " 8. 6  
19. 6

Geo Bridge 1/2 corn = 11. 15. 1

J. C. Mayne 1 camp (corn.)

17 SATURDAY [260-105] Jewish Year 5659 commences

H. Bridge pl  
H. McCarthy pl -

18 SUNDAY - 15 after Trinity [261-104] Ember Week



19 MONDAY [262-103]

R. Bridge pl  
R. McCarthy pl.

BT from S. Corner  
4 Yankee plough shares

20 TUESDAY [263-102]

R. Bridge pl  
R. McCarthy pl.  
Geo Bridge & Br.

Sent Invoices for cuttings - H. A. College -  
4000 Reeling 10/- 3  
4000 White Pine 10/- 2  
2000 Madena 10/- 1  
1500 " 10/- 1  
18  
5.18  
Aug 27 - 6000 Alcorn 10/- = 53

J. C. Mayo 1 camp

21 WEDNESDAY [264-101] Ember Day. St. Matthew, Ap.

R. Bridge pl  
R. McCarthy pl  
Geo Bridge & Br.

C. F. Lindeman  
618 Gals. Term. 1/2 = 36-1-0

22 THURSDAY [265-100]

R. Bridge (pl.)  
R. McCarthy pl.

10 7 1/2  
4 1/2  
6

2.2.6  
4 19  
40. 7.6  
10 7 1/2  
2 1/2  
40. 18. 1 1/2  
10. 4. 6  
1  
11. 4. 6

23 FRIDAY [266-99] Ember Day. 2h 39m A.M. (Greenwich)

R. Bridge (pl.)  
R. McCarthy pl.

C. Alf Bridge 9/2. (share)

Harry came back from Hospital.

24 SATURDAY [267-98] Ember Day

Lynch & Co. P. N. £45. due pd  
" " " £15.30. " pd.

R. Bridge pl.  
R. McCarthy pl.

25 SUNDAY—16 after Trinity [268-97]



26 MONDAY [269-961]

R. Bridge pl.  
 R. McCarthy pl-

Finished ploughing vineyard

R. Bridge - 15 days  $\frac{3}{4}$  - \$2.10.0

R. McCarthy - 10 days  $\frac{3}{4}$  - ~~\$1.10.0~~  $\frac{4}{-}$  - \$2

27 TUESDAY [270-951]

V. Bridge worked  $\frac{3}{4}$  - Harrowing hill side

28 WEDNESDAY [271-941]

V. Bridge worked Harrowing

29 THURSDAY [272-93] St. Michael and All Angels. Michaelmas Day.  
 Quarter Day. O 11h 11m P.M. (Greenwich)

V. Bridge worked  $\frac{1}{2}$  day (Harrowing)

30 FRIDAY [273-921]

Geo Bridge worked (went to Br. for wagon)

C. F. Ludman  
 Height 11 Hlbs 23 gms -  $\frac{1}{4}$

1 OCT SATURDAY [274-911] Cambridge Michaelmas Term begins.  
 Pheasant Shooting begins

Geo Bridge worked (pl vineyard roads)  $\frac{4}{-}$

2 SUNDAY—17 after Trinity [275-90]



3 MONDAY [276-89]

Geo Bridge pl. roads  $\frac{1}{2}$  day—

$$\begin{array}{r} 60 = 127 \cdot 10 \\ 10 \quad 25 \\ \hline 152 \cdot 10 \end{array}$$

4 TUESDAY [277-88]

d. Hollinshead Jr. paid £15 (for waggon) - 8/10/- steel swing -  
 d. Hollinshead. 1 col.  $\frac{3}{4}$

5 WEDNESDAY [278-87] Dividends due at Bank

Geo Bridge  $\frac{1}{2}$  day c 5/- Drawing panel for cement

$$\begin{array}{r} 150 \\ 50 \\ \hline 100 \\ 30 \\ 10 \\ \hline 20 \\ 20 \\ \hline 60 \end{array}$$

$$\begin{array}{r} 60 \\ 15 \\ \hline 75 \end{array}$$

$$\begin{array}{r} 60 = 127 \cdot 10 \\ 27 \\ \hline 154 \cdot 10 \\ 16 \\ \hline 170 \cdot 10 \\ 60 \\ \hline 230 \cdot 10 \end{array}$$

$$\begin{array}{r} 15 \\ 15 \\ \hline 30 \\ 15 \\ \hline 45 \\ 15 \\ \hline 60 \end{array}$$

$$\begin{array}{r} 25 \\ 30 \\ \hline 55 \end{array}$$

$$\begin{array}{r} 8 \\ 22 \\ \hline 30 \end{array}$$

$$\begin{array}{r} 40 = 85 \\ 80 = 170 \\ \hline 255 \end{array}$$

$$\begin{array}{r} 10 \end{array}$$

6 THURSDAY [279-86]

Geo Bridge  $\frac{3}{4}$  Drawing gravel

7 FRIDAY [280-85] c 6h 5m P.M. (Greenwich)

Geo Bridge gravel &amp; Sand

No work

8 SATURDAY [281-84]

(Drawing blocks for Hall.)

9 SUNDAY—18 after Trinity [282-83]



10 MONDAY [283-82] Oxford Michaelmas Term begins

Geo Bridge (L Br.)  
 Austin Bridge (topping)  $\frac{1}{2}$  day  
 L. Kibble began work @ £1- per week.

J. C. Dwyer 1 camp  $\frac{1}{6}$ -

11 TUESDAY [284-81]

Geo Bridge (L Br.)  
 Austin Bridge (topping)  
 L. Kibble

C. F. Lindeman  
 984 Gals. Term.  $\frac{1}{2}$  = £ 57. 8. 0

12 WEDNESDAY [285-80]

Austin Bridge (topping)  
 L. Kibble.

Recd of R. Leases  $\frac{1}{4}$  (Barley)

SUNDAY

13 THURSDAY [286-79]

Austin Bridge { topping  
 L. Kibble }  
 Geo Bridge  $\frac{1}{2}$  day mending fence in flat  $\frac{2}{6}$ -

14 FRIDAY [287-78] Fire Insurances expire

Austin Bridge topping  
 L. Kibble hawking  
 R. Carroll digging at cellar -  $\frac{4}{-}$

15 SATURDAY [288-77] • 0h 37m P.M. (Greenwich)

Austin Bridge  $\frac{1}{2}$  day  
 L. Kibble - whole day -  
 R. Carroll  $\frac{1}{2}$  day -

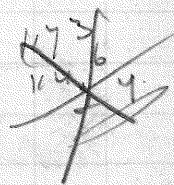
Recd of R. Young  
 Cheque £22 10 8. See Sp. 17

16 SUNDAY—19 after Trinity [289-76]



17 MONDAY [290-75] Quarter Sessions Week

Geo Bridge (to Bx.),  
 Austin Bridge (cellar floor),  
 L. Kibble (harrowing),  
 R. Carroll (cellar floor),



J. C. Mayne 1 camp

18 TUESDAY [291-74] St. Luke, Evan.

Geo Bridge (to Bxton)  
 Austin Bridge (cellar floor)  
 R. Carroll (cellar floor)  
 L. Kibble (vineyard)

C. F. Lindeman  
~~1173 Gals. Drum 1/2 = £68.86~~  
 1146 Gals. Drum 1/2 = £66.17

Innes & Co  
 pd. £10 into Sydney ap

19 WEDNESDAY [292-73]

Austin Bridge (cellar floor)  
 R. Carroll (cellar floor)  
 L. Kibble (vineyard)

20 THURSDAY [293-72] MON. AS

Austin Bridge (cellar floor)  
 R. Carroll (cellar floor)  
 L. Kibble worked

7 = 24  
 6 = 20  
 8 = 44  
 104  
 144  
 10  
 15-8

21 FRIDAY [294-71]

Austin Bridge (cellar floor)  
 R. Carroll (cellar floor)  
 L. Kibble worked

22 SATURDAY [295-70] 9h 9m A.M. (Greenwich)

Austin Bridge (cellar floor)  
 R. Carroll (cellar floor)  
 L. Kibble (worked) paid up to date (2)

23 SUNDAY—20 after Trinity [296-69]



24 MONDAY [297-68] Michaelmas Law Sittings begin

Austin Bridge worked

25 TUESDAY [298-67]

Austin Bridge  
Sw Bridge to Bxton  
Bryne 1 camp

$\frac{4}{4}$  on 18th (Lunch)  $\frac{4}{4}$  - Loading  $\frac{1}{4}$  - unloading  $\frac{1}{4}$  =  $\frac{8}{4}$   
 $\frac{1}{12}$  " (L.H.)  $\frac{4}{4}$  - unloading  $\frac{1}{4}$  =  $\frac{5}{4}$

26 WEDNESDAY [299-66]

Austin Bridge worked  $\frac{1}{2}$  day  
Sw Bridge to Bxton

C. F. Lindeman  
 902 Gals. Reis.  $\frac{1}{2}$  =  $\frac{52.12.4}{}$

27 THURSDAY [300-65]

Austin Bridge

28 FRIDAY [301-64] SS. Simon and Jude, App.

Austin Bridge

Pa R. Carroll  $\frac{11.10.0}{}$ 

29 SATURDAY [302-63] O 0h 18m P.M. (Greenwich)

Austin Bridge

30 SUNDAY—21 after Trinity [303-62]



31 MONDAY [304-611]

Austin Bridge (sulphuring)

1 NOV TUESDAY [305-601] All Saints' Day. Holiday, Stock Exchange.  
Fox Hunting begins

Austin Bridge

Pd Geo Bridge £11.15.0  $\frac{1}{2}$  of corn

Recd Mrs. Danks' rent £3.80

2 WEDNESDAY [306-591]

Austin Bridge

3 THURSDAY [307-581]

Austin Bridge  
L. Kettle

4 FRIDAY [308-571]

Austin Bridge  
L. Kettle

5 SATURDAY [309-561] Gunpowder Plot

Austin Bridge  $\frac{1}{2}$  day  
L. Kettle  $\frac{1}{2}$  "

Austin Bridge £2.00 of

Celebrating Alf. Lodge on a/c £2. Hancing.

6 SUNDAY—22 after Trinity [310-551] 2h 28m P.M. (Greenwich)



7 MONDAY [311-54]

Austin Bridge /  
L. Kibble } worked

S. Thompson - 2 Pigs 17/6 = 35/-

8 TUESDAY [312-53]

Austin Bridge /  
L. Kibble } worked.

9 WEDNESDAY [313-52] Prince of Wales born, 1841. Lord Mayor's Day

10 THURSDAY [314-51]

Austin Bridge /  
L. Kibble } worked

Freight C7 d.  
38 qrs - 7 Hds - 9 1/2 unloading 1/3 = 10/5  
6 Hds. 8 qrs - 5/-

11 FRIDAY [315-50] Martinmas. Scottish Quarter Day. Half Quarter Day

Austin Bridge  
L. Kibble

J. Lambkin - on a/c. 8/5/-

200  
20 7.9  
140  
20 9  
12 150  
161

4 15.  
4 10  
12.5

4 15.

Aust. Bridge  
L. Kibble

12 SATURDAY [316-49]

13 SUNDAY—23 after Trinity [317-48]



14 MONDAY [318-47] • 0h 21m A.M. (Greenwich)

Austin Bridge  
L. Kibble

15 TUESDAY [319-46]

Austin Bridge  
L. Kibble

16 WEDNESDAY [320-45]

Austin Bridge  
L. Kibble

17 THURSDAY [321-44]

Austin Bridge  
L. KibbleGeo Bridge to Br. 3 1/4 lbs 171 Gals. Inferior d m c 10 = 7.2.6  
3 1/4 lbs 305 " Hermitage c 1/2 = 15.5 -  
52.7.6

J. Mayne 1 camp 1/6

ordered - J. J. Martin & Co. - 1 Scotch Clipper Plough 18-12 inch cut - 4/12.6 with  
Land wheel 7/6 - also 1 " " " 10 inch " 3/15-0. with wheel 7/6

18 FRIDAY [322-43]

Austin Bridge  
L. Kibble  
Geo Mayne & Co. -  
Andrew H. Wilkinson 30 ft flooring boards  
30 ft H Boards 760  
6/-

19 SATURDAY [323-42]

Austin Bridge 1/2 day  
L. Kibble worked

20 SUNDAY - 24 after Trinity [324-41] • 5h 5m P.M. (Greenwich)



21 MONDAY [325-40]

Austin Bridge worked.

22 TUESDAY [326-39]

Geo Bridge to Br.  
Austin BridgeC. J. Lundenman  
1184 Gals term  $\frac{1}{2}$  = £69.1.4

J. C. Mayne 1 camp.

Geo Bridge f. Br.  
Aut. Bridge

23 WEDNESDAY [327-38]

I. Kibble paid up to date  
£2"4"10 Hold 4/- for leave

24 THURSDAY [328-37]

Austin Bridge worked.  
Geo Bridge drawing stakesLaffay & Co.  
Ironmongers  
Sydney

25 FRIDAY [329-36]

James Lambkin's interest due ~~£3.00~~ £1-10-0Austin Bridge  
Geo Bridge drawing stakes

26 SATURDAY [330-35]

Austin Bridge

27 SUNDAY—1 in Advent [331-34]



28 MONDAY [332-33] O 4h 39m A.M. (Greenwich)

N. Bridge pl.  
Vic. Bridge pl.  $\frac{1}{2}$  day

29 TUESDAY [333-32]

N. Bridge pl.  
Vic. Bridge pl.

Recd from C. F. Lunden  
£ 243-5.0

30 WEDNESDAY [334-31] St. Andrew, Ap.

~~James Gillard's interest due £6.~~

N. Bridge pl.  
Vic. Bridge pl.

1 THURSDAY [335-30]

N. Bridge pl.  
Vic. Bridge pl.

2 FRIDAY [336-29]

N. Bridge pl.  
Vic. Bridge pl.  
Sew. Bridge  $\frac{1}{2}$  day pl for incense

3 SATURDAY [337-28]

Vic. Bridge pl.  $\frac{1}{2}$  day  
Sew. Bridge pl.  $\frac{1}{2}$  day

4 SUNDAY—2 in Advent [338-27]



5 MONDAY [339-26]

PA Austin Bridge \$48.4 wpt date

L. Bridge pl ~~200~~  
 Vic Bridge pl  
 Geo Bridge (pl hill)

6 TUESDAY [340-25] 10h 6m A.M. (Greenwich)

L. Bridge pl v.  
 Vic Bridge pl v.  
 Geo Bridge (pl hill)

7 WEDNESDAY [341-24]

Geo Bridge (L Br.)  
 L. Bridge pl finished vineyard  
 Vic Bridge pl  
 Austin Bridge chip - began work c f1

J.C. Mayne 1 camp

8 THURSDAY [342-23]

James A. Gillard's interest due \$6  
 J. A. Gillard pa \$4.00 on 4/10 - on 3rd inst.

Geo Bridge pl Br.  
 Austin Bridge chip  
 Vic Bridge chip -

C. F. Lindeman  
 330 Gals term. 1/2 = \$19.50  
 561 - Pers. 1/2 = 32.14.6  
991 \$52.19 6

9 FRIDAY [343-22]

Austin Bridge chip  
 Vic Bridge chip  
 Geo Bridge pl -

10 SATURDAY [344-21] Black Game and Grouse Shooting ends

No work

PA L. Bridge  
 \$1-6-8 wpt date

11 SUNDAY—3 in Advent [345-20] Ember Week



12 MONDAY [346-19]

Geo Bridge (L Br)  
Vic Bridge (L Br)  
Austin Bridge

(13<sup>th</sup>)  
C. F. Lindeman  
1423 Gals term -  $\frac{1}{2}$  = £83. 0. 2

J. C. Mayne 2 camps  $\frac{1}{6}$  = 3/-

13 TUESDAY [347-18] • 11h 43m A.M. (Greenwich)

Geo Bridge Br.  
Vic Bridge p Br.  
Austin Bridge

J. C. Mayne 1 camp  $\frac{1}{6}$

14 WEDNESDAY [348-17] Ember Day

Geo Bridge  $\frac{1}{2}$  day p Br.  
Austin Bridge —

60  
120  
100  
280  
Cash

350  
50  
120  
420  
5  
315

15 THURSDAY [349-16]

J. M. M. went to S.aney  
Geo Bridge (L Br)  
Vic Bridge (L Br)  
Austin Bridge

Pa Geo Bridge  
Working yr. ending Sep Oct - 19 $\frac{1}{4}$  ac. c $\frac{1}{2}$  10.4.1  
(Planting) L & Laurie  
11.4.6

C. F. Lindeman  
1439 Gals. Reis. c $\frac{1}{2}$  = £83. 18. 10

J. C. Mayne 2 camps = 3/-

16 FRIDAY [350-15] Ember Day

Geo Bridge (p Br)  
Vic Bridge p Br.  
Austin Bridge

Oct. 15 & 16  
A. Y. Hutchison  
Freight - Bundle capping 7-  
" Timber etc. 7-3  
8-3

17 SATURDAY [351-14] Ember Day. Oxford Michaelmas Term ends

No work

A. Bridge  
mending watch 5/-

J. M. M. returned

18 SUNDAY—4 in Advent [352-13]



19 MONDAY [353-12] Cambridge Michaelmas Term ends

Austin Bridge (chip)  
Vic Bridge (chip)

20 TUESDAY [354-11] 3h 22m A.M. (Greenwich)

Geo Bridge L Br.  
Austin Bridge  
Vic Bridge

J. Lynch Co.  
879 Gals. Alm. - £43-19.0

Rec<sup>d</sup> fr. C. F. Lindeman 176-17.4

J. C. Mayne 1 camp  $\frac{1}{5}$

5300 Red, 1500 White steel bgs to C.F.

21 WEDNESDAY [355-10] St. Thomas, Ap. Michaelmas Law Sittings end

Geo Bridge (p Br.)  
Austin Bridge  $\frac{1}{2}$  day  
Vic Bridge  $\frac{1}{2}$  day

3500

£95

W W

22 THURSDAY [356-9] YAGHOM 32

Geo Bridge pl.  
Austin Bridge chop  
Vic Bridge chip -

23 FRIDAY [357-8] YAGHUT 32

Geo Bridge pl.  
Austin Bridge  
Vic Bridge

Austin ~~12~~ 12  $\frac{1}{2}$  days

How much for Thomas Bay

~~12~~ 12

24 SATURDAY [358-7] 32

No work.

146

12.10.4  
8.4  
12.18.4

25 SUNDAY—Christmas Day [359-6] Quarter Day

35 19.6  
35 12.10  
6.4

16



26 MONDAY [360-51] St. Stephen, M. Boxing Day. Bank Holiday

Pd Geo Bridge 12-18-14 up to date

No work

27 TUESDAY [361-41] St. John, Ap. O 11h 39m P.M. (Greenwich)

Geo Bridge  $\frac{1}{2}$  day -

A. Collins began work.

£2. in advance. also 10/- = 2-10-0

28 WEDNESDAY [362-31] Innocents' Day

Geo Bridge 1/2 Br  
Austin Bridge (chip)  
Joe Bridge (chip)

J. C. Mayne 1 camp.

29 THURSDAY [363-21]

Geo Bridge (fr. Br)  
Austin Bridge (chip)  
Joe BridgeJ. Lynch & Co.  
816 Gals. brine C/- = £40-16-0

30 FRIDAY [364-11]

Geo. Bridge (pl. hiel)  
Joe " (driving bullocks)  
Austin Bridge (chip)Union Oil Engine Co.  
1 Engine £95Pd A. G. Hutcherson £19. 1. 10

31 SATURDAY [365-01]

Geo Bridge pl. hiel  $\frac{1}{2}$  day  
Joe " driving  $\frac{1}{2}$  "  
Austin " Chipping whole day

1 JAN SUNDAY—1 after Christmas [1-364] 1899. Circumcision



2 MONDAY [2-363] Bank Holiday, Scotland. Holiday Stock Exchange.  
Quarter Sessions Week

3 TUESDAY [3-362]

4 WEDNESDAY [4-361]

$$\begin{array}{r} 16\frac{1}{2} \\ 4 \\ \hline 64 \end{array}$$
$$\begin{array}{r} 5.4 \\ 3.8 \\ \hline 9.2 \end{array}$$

48

101  
102  
103  
104  
105  
106  
107  
108  
109  
110  
111  
112  
113  
114  
115  
116  
117  
118  
119  
120  
121  
122  
123  
124  
125  
126  
127  
128  
129  
130  
131  
132  
133  
134  
135  
136  
137  
138  
139  
140  
141  
142  
143  
144  
145  
146  
147  
148  
149  
150  
151  
152  
153  
154  
155  
156  
157  
158  
159  
160  
161  
162  
163  
164  
165  
166  
167  
168  
169  
170  
171  
172  
173  
174  
175  
176  
177  
178  
179  
180  
181  
182  
183  
184  
185  
186  
187  
188  
189  
190  
191  
192  
193  
194  
195  
196  
197  
198  
199  
200



Dr.

## JANUARY, Cash Account.

Cr.

1898

May 21. Recd fr. Geo Hollenbeck Junr 12 18 9

July 12 " " Geo Hollenbeck 5-

Aug 25 Sent - Geo Hollenbeck \$10

Oct 4- d Hollenbeck Junr. pd \$15 for wages 8/10/ - still owing

1899- June 24. d Hollenbeck pd \$10

Sep 4 - d Hollenbeck \$24.00 -

1898  
 May 21  
 July 12  
 Aug 25  
 Oct 4  
 1899  
 June 24  
 Sep 4



Dr.

FEBRUARY, Cash Account.

Cr.

*Wm. McDonald*

*Wm. McDonald*



*Wm. McDonald*

Dr.

MARCH, Cash Account.

Cr.

*Wm. McDonald*

*Wm. McDonald*



Dr.

APRIL, Cash Account.

Cr.

*Handwritten notes in the left column:*  
1. 1st of April  
2. 2nd of April  
3. 3rd of April  
4. 4th of April  
5. 5th of April  
6. 6th of April  
7. 7th of April  
8. 8th of April  
9. 9th of April  
10. 10th of April  
11. 11th of April  
12. 12th of April  
13. 13th of April  
14. 14th of April  
15. 15th of April  
16. 16th of April  
17. 17th of April  
18. 18th of April  
19. 19th of April  
20. 20th of April  
21. 21st of April  
22. 22nd of April  
23. 23rd of April  
24. 24th of April  
25. 25th of April  
26. 26th of April  
27. 27th of April  
28. 28th of April  
29. 29th of April  
30. 30th of April

*Handwritten notes in the right column:*  
1. 1st of April  
2. 2nd of April  
3. 3rd of April  
4. 4th of April  
5. 5th of April  
6. 6th of April  
7. 7th of April  
8. 8th of April  
9. 9th of April  
10. 10th of April  
11. 11th of April  
12. 12th of April  
13. 13th of April  
14. 14th of April  
15. 15th of April  
16. 16th of April  
17. 17th of April  
18. 18th of April  
19. 19th of April  
20. 20th of April  
21. 21st of April  
22. 22nd of April  
23. 23rd of April  
24. 24th of April  
25. 25th of April  
26. 26th of April  
27. 27th of April  
28. 28th of April  
29. 29th of April  
30. 30th of April



Dr.

MAY, Cash Account.

Cr.

to balance



Dr.

JUNE, Cash Account.

Cr.

*[Faint, illegible handwriting, possibly bleed-through from the reverse side of the page.]*



Dr.

**JULY, Cash Account.**

Cr.



Dr.

**AUGUST, Cash Account.**

Cr.

The image shows a piece of paper with dense, handwritten cursive text. The text is written in dark ink on a light-colored, textured paper. The handwriting is very close together and slanted, making it difficult to read. The paper is slightly wrinkled and has some faint, illegible markings at the top and bottom edges.



Dr.

**SEPTEMBER, Cash Account.**

Er.



Dr.

**OCTOBER, Cash Account.**

Cr.

$$\begin{array}{r} 1357 \quad 4 \quad 3 \\ 1043 \quad 1 \quad 0 \\ \hline .31655- \end{array}$$
[illegible]



Dr.

**NOVEMBER, Cash Account.**

Cr.



Dr.

DECEMBER, Cash Account.

Cr.

Dr.

ANNUAL CASH SUMMARY.

Cr.

Balance from last year

January

February

March

April

May

June

July

August

September

October

November

December

Balance carried forward

£

Balance from last year

January

February

March

April

May

June

July

August

September

October

November

December

Balance carried forward

£



~~Dr. J. H. ...~~  
 Work at Hall

R. Carroll Jun. 2 1/2 days  
 Wm. F. Wilkerson 2

8457  
 2249  
 10700  
 1439  
 12139

C. F. J.

Gals.	White
Red <del>788</del>	Gals.
949	786
843	902
974	561
618	
984	2249
1146	1439
1184	3688
330	
1423	
9451	

J. Lynch  
 Red  
 531  
 171  
 305  
 879  
 816  
 2702

40 X 20

120

Jan 2 days - 10.  
 Mar 25 10 2. 10 - 17. 10  
 ... 1 17. 10 8. 16 -  
 ... 26. 5 -  
 ... 4 17. 10 30  
 ... 2. 10 12. 10  
 ... 2. 14 30  
 ... 10 4 46. 10  
 ... 45 6 146  
 ... 50 292  
 ... 74 11 81  
 ... 50 733.0  
 ... 146. 30.  
 ... 40 20  
 ... 800  
 ... 450  
 ... 380  
 ... 250  
 ... 17801

31 ... 66. 0. 19  
 4  
 264  
 28  
 2172  
 528  
 73.92  
 19  
 7441  
 44  
 £40.00  
 146  
 50  
 800  
 450  
 380  
 250  
 17801  
 12500  
 688  
 1815  
 140  
 62. 0. 29



97  
 11  
 4642  
 236  
 4878

903  
 1975  
 429  
 2404

4878  
 2404  
 903  
 805  
 8990

4- 4  
 5-  
 2  
 2  
 4-5  
 1-15  
 4  
 2  
 1-10  
 20-10  
 1319 1/5  
 5  
 20-10  
 12-6595  
 20-549-7  
 27-9-7  
 65-19-7  
 93-8-7  
 2-10

9195-  
 8990  
 205  
 Ap. 20

1  
 1  
 1 11 10  
 52-5-3  
 3-1-10

266-7  
 58-5-3  
 208-1-9

8-14-10  
 1-5-  
 9-19-10



15 18 0 10  
 22 16 10  
 50  
 30  
 318 14 10  
 11 10  
 315 3 0  
 9 19 10  
 305 3 2

Vintage Mar 2<sup>nd</sup> 1898

N Bridge 31 days 5/- 5.5.0  
 A " 18 " " 4.10.0  
 A. M. Gann 19 " 5/- 4.15.-  
 J. Thurgood 12 1/2 " 5/- 3.2.6  
 R. Kettle 2 hrs 10/- 1.-.-  
 J. Phillipp 16 days 5/- 4.-.-  
 Geo. Eilwer 21 " 4/- 6.6.-  
 Vic Bridge 18 days 2/6 2.5.-  
 N Bridge 21 " 5/- 5.5.-  
 36.8.6

15  
 10.0.0

Aug 17. 453.  
 1.4  
 1.10  
 1.

10.0.0  
 60  
 60.3

Sydney.  
 198.19.8  
 57-4.11.0  
 10.0.0  
 40.  
 321.11.8  
 10.18.  
 280.1.6  
 662.11.2  
 47.17.3  
 674.13.11

6.18.  
 8  
 26.7  
 1  
 1  
 3.18.6  
 1.13.9  
 10.  
 47 17 3







# REMINGTON TYPEWRITER.

**IT MEANS BUSINESS.**—Correspondence efficiently conducted means business.

Typewritten correspondence means greater efficiency all round: Saving of time in writing; legibility and expressiveness in letters; and is welcome to the recipients.

**WHY THE REMINGTON?**—Because, mainly, of its simplicity, durability and strength.

**IT IS RELIABLE.**—Because, notwithstanding its simplicity, it is thoroughly progressive, embodying all practical improvements applicable to the typewriter.

Let us send you a Catalogue.

WYCKOFF, SEAMANS & BENEDICT, 100, Gracechurch Street, London, E.C.  
(Corner of Leadenhall Street).

## WHELPTON'S PILLS.

THE BEST FAMILY MEDICINE.

Are one of those Pure Medicines which for their extraordinary properties have gained an almost **UNIVERSAL REPUTATION**. Recommended for Disorders of the Head, Chest, Bowels, Liver, and Kidneys.



ESTABLISHED 1835.

## WHELPTON'S HEALING OINTMENT.

The best remedy for BURNS, SCALDS, ULCERS, and all SKIN DISEASES. 7½d., 1s. 1½d. & 2s. 9d., of all Chemists. Free by Post in the United Kingdom for 8, 14 or 33 stamps.

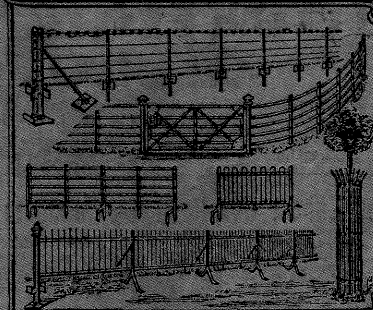
Proprietors:

G. WHELPTON & SON, 3, CRANE COURT, FLEET ST. LONDON, E.C.

7499

VERY LOW PRICES QUOTED ON APPLICATION. LISTS FREE.

## FENCING, HURDLES, GATES &c



BAYLISS, JONES & BAYLISS. WOLVERHAMPTON.

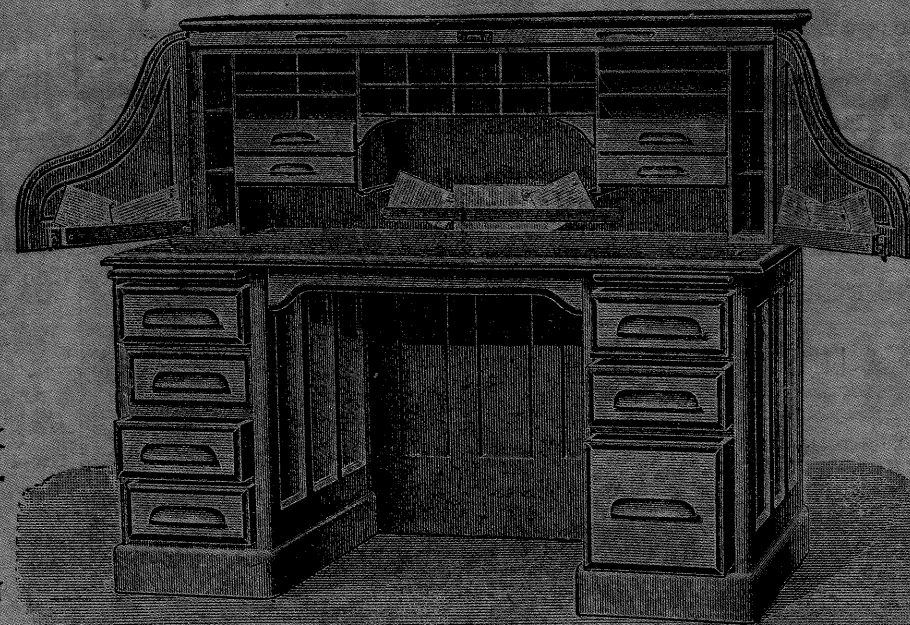
139 & 141 CANNON ST. LONDON, E.C.

# AMERICAN DERBY ROLL TOP DESKS.

ELEGANT IN DESIGN AND OF THE MOST INGENIOUS CONSTRUCTION.

Suitable for the HOME, for BANKS, for PUBLIC and PRIVATE OFFICES.

THE DESK IS A COMPLETELY FITTED OFFICE IN ITSELF.



All sizes, in Oak or Walnut. The closing of the top automatically locks all the drawers.

Prices from £7 7 0

Send for Illustrated Detailed Catalogue.

Sole Importer—THOMAS TURNER,

44, HOLBORN VIADUCT, LONDON, E.C., & 9, NEWARKE STREET, LEICESTER.

# NORTHERN ASSURANCE COMPANY.

ESTABLISHED 1836.

LONDON: 1, Moorgate Street, E.C.

ABERDEEN: 1, Union Terrace.

## INCOME AND FUNDS (1896).

Fire Premiums...	£700,000
Life Premiums...	243,000
Interest ...	178,000

**Accumulated Funds ... £4,893,000**

# NORWICH UNION FIRE OFFICE.

FOUNDED 1797.

Head Office: SURREY STREET, NORWICH.

London Offices: 50, FLEET STREET, E.C.; 71, KING WILLIAM STREET, E.C.; 195, PICCADILLY, W.: and 1, VICTORIA STREET, S.W.

Amount Insured ...	£330,000,000
Losses Paid ...	12,000,000

Lowest Rates of Premium. Prompt and Liberal Settlement of Losses.

APPLICATIONS FOR AGENCIES INVITED.

FIRE

LIFE

Invested Funds  
£8,929,000

Annual Income  
£2,836,697



Absolute Security combined with

Moderate Rates of Premium.



**EAGLE INSURANCE COMPANY.**  
Established 1607.

Head Office: 79, Pall Mall, London, W.C. City: 41, Threadneedle St., E.C.  
Birmingham—104, COLMORE ROW. Leeds—8, SOUTH PARADE.  
Bristol—11, CLARE STREET. Manchester—64, CROSS STREET.

THE REPORT OF THE DIRECTORS for the year ending December 31, 1896, states that New Assurances to the extent of £419,128 were effected, the Premiums received in respect of which amounted to £18,288. Of this amount £59,100 was re-assured at Premiums amounting to £2,539. The consideration for Annuities granted was £74,014. Claims on decease of lives amounted to £190,964, and those on attainment of prescribed ages to £3,132. The net result of these operations was to increase the Funds of the Company by the substantial sum of £83,500.

Accumulated Funds ..	£2,550,000
Annual Income ..	£250,000
Claims paid during past 49 years ..	£12,000,000

Revised Prospectus on Application.

# WHITFIELD'S SAFES

AND IRON DOORS,  
20, Cheapside, London.

WORKS, BIRMINGHAM.