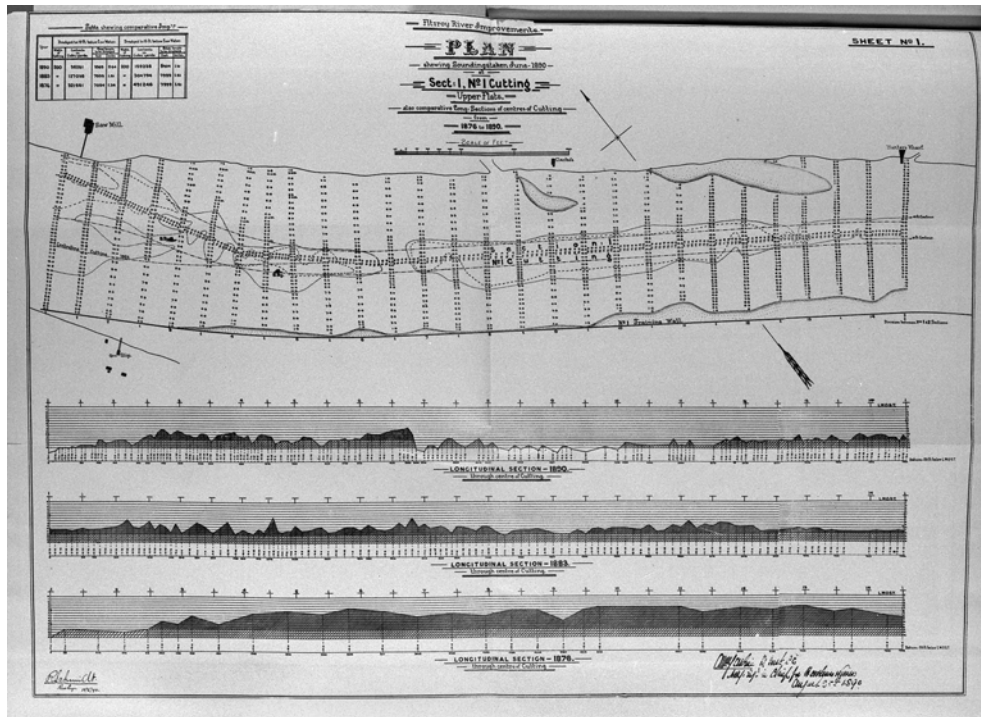
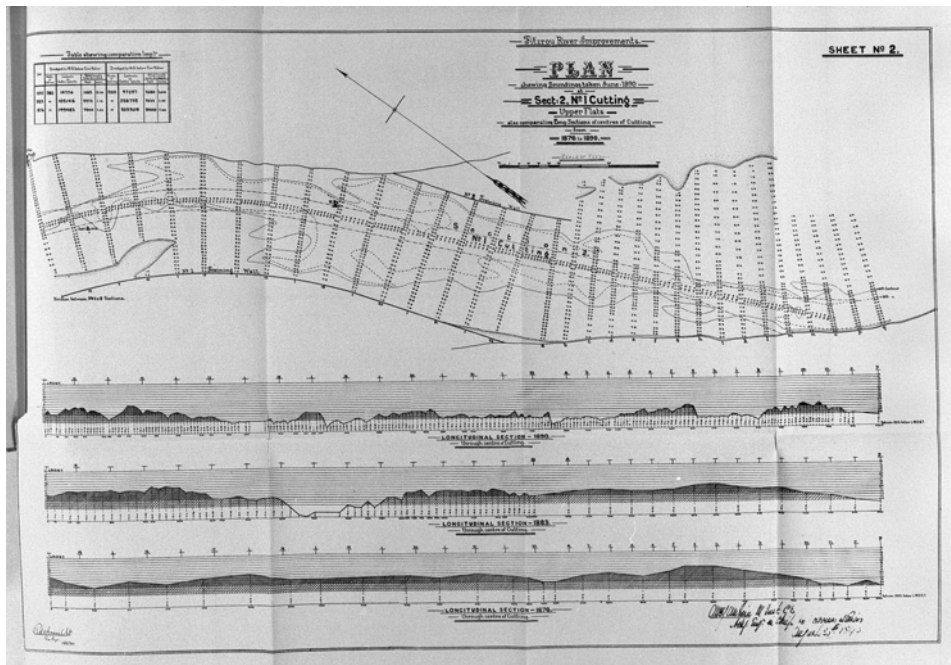


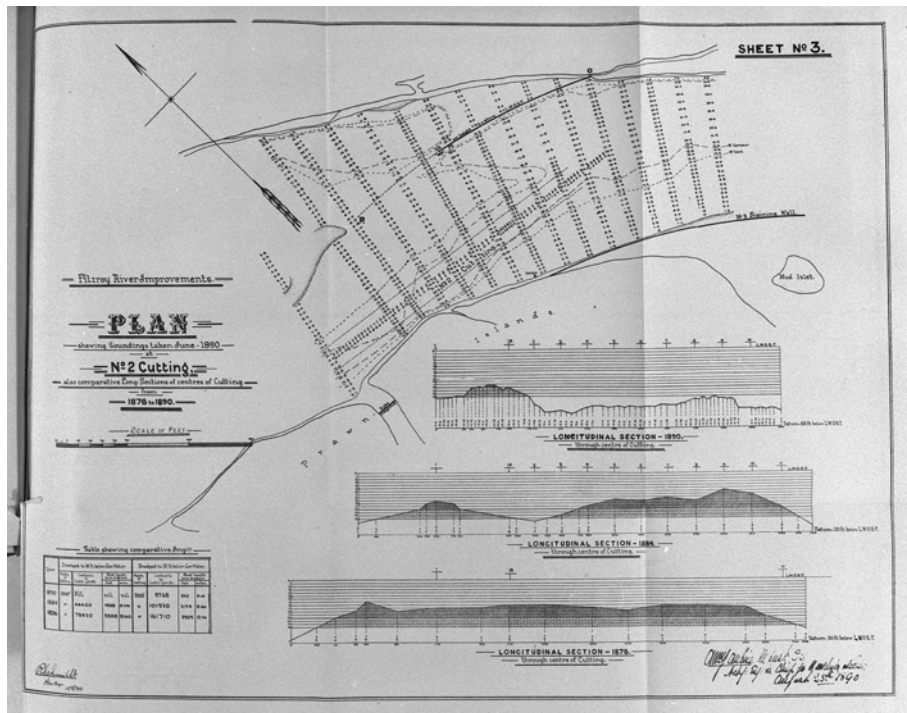
# Fitzroy River Surveys, 1890

conducted by Richard Schmidt, H&R Resident Engineer, Rockhampton.

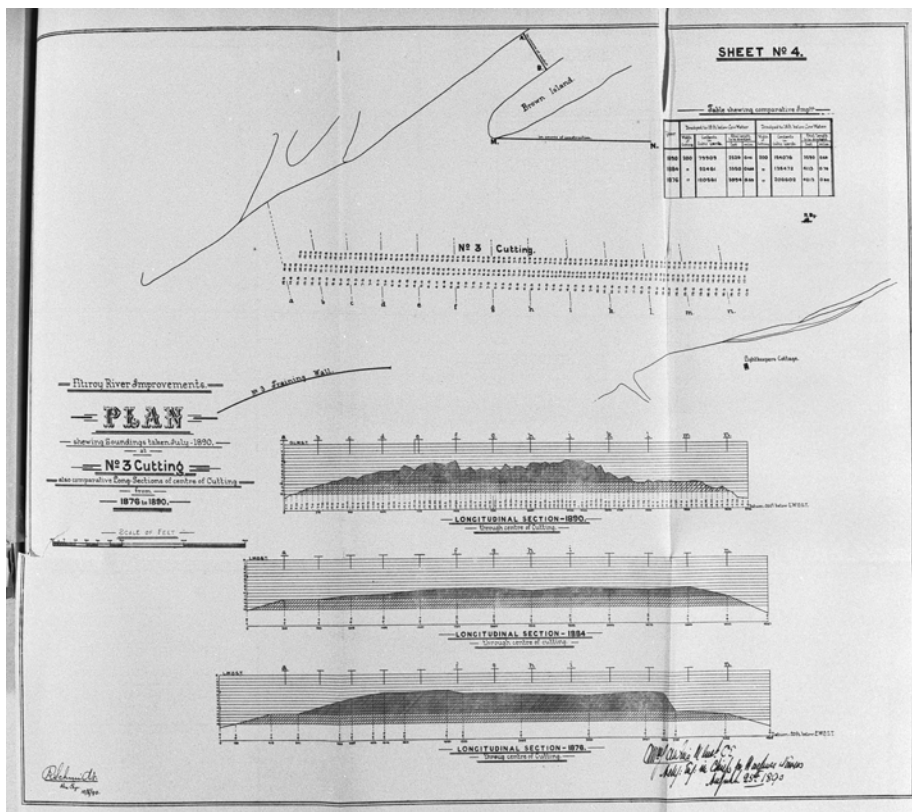


Above: Long-sections in No. 1 Cutting, Section 1; Below: No. 1 Cutting, Section 2, Upper Flats

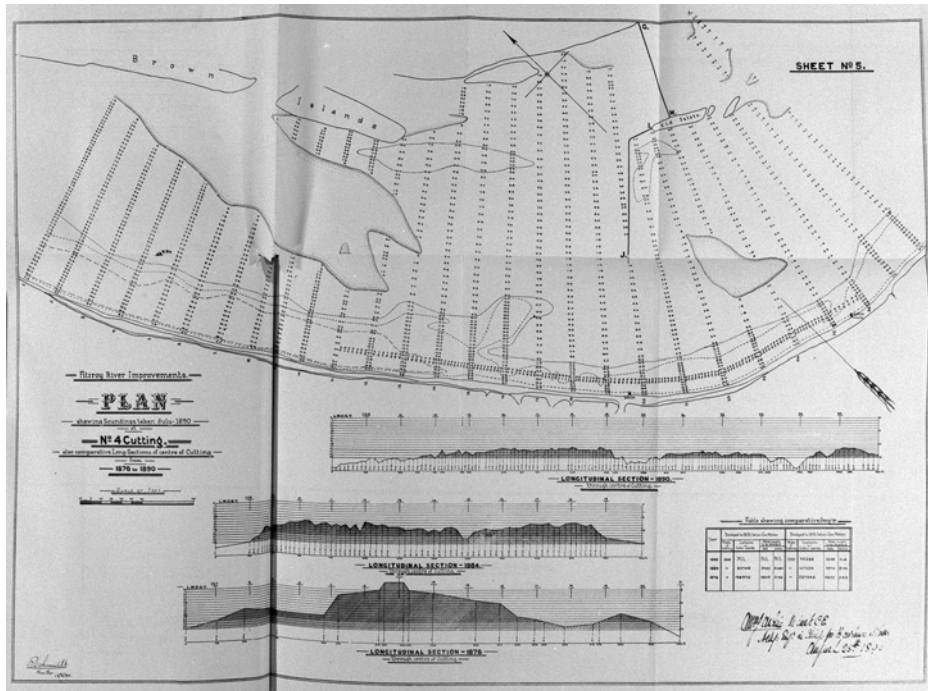




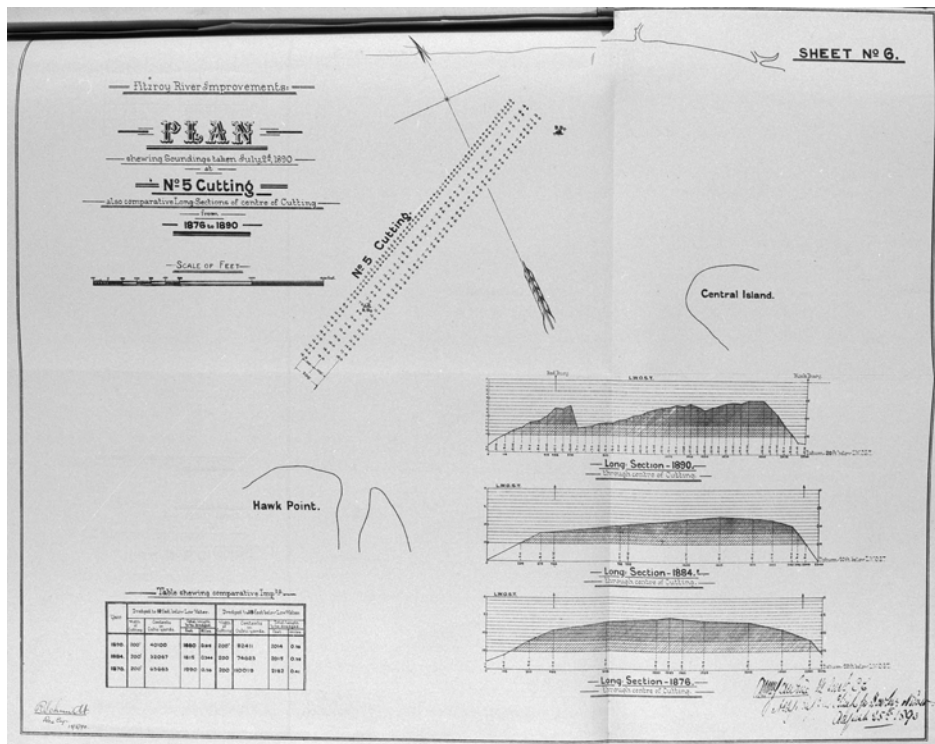
No. 2 Cutting, Prawn Islands



No. 3 Cutting, Archer's Crossing



No. 4 Cutting, Brown's Crossing.



No. 5 Cutting, above Central Island.

(QV&P, 1890)